

# RIVER CAMPUS

2025-2026 SEASON OF EVENTS



SOUTHEAST MISSOURI  
STATE UNIVERSITY · 1873®

# HCAM

HOLLAND COLLEGE OF ARTS AND MEDIA

# Calendar

## JULY

- |   |  |     |
|---|--|-----|
| 1 | Selections from the Permanent Collection (thru 8/17) | CRI |
| 1 | Transition Space: Benjie Heu (thru 8/17)             | CRI |

## AUGUST

- |    |               |     |
|----|---------------|-----|
| 26 | Chapa & Yount | MUS |
|----|---------------|-----|

## SEPTEMBER

- |    |  |     |
|----|--|-----|
| 2  | Brito & Lamont   | MUS |
| 2  | Shutter & Sound: The Jazz Photography of Bob Willoughby (thru 10/19) | CRI |
| 9  | Dr. Chris Goeke: I Get By With A Little Help From My Friends         | MUS |
| 19 | Symphony Orchestra: Pops in the Park!                                | MUS |
| 25 | Grease (thru 9/27)   | THD |
| 28 | From Tennessee, with Love: featuring Cellist Dr. Wesley Baldwin      | MUS |
| 28 | Dr. Leslie Jones and Dr. Barb Lamont: The Stories We Sing            | MUS |

## OCTOBER

- |    |   |     |
|----|---|-----|
| 6  | Wind Symphony: ¡España!   | MUS |
| 9  | Lanford Wilson Short Plays (thru 10/11)                             | THD |
| 9  | Southeast Choirs: <i>I Will Sing</i>                                | MUS |
| 10 | Pluckophony Series Faculty Recital: Jesse Steele                    | MUS |
| 14 | Johanna Yarborough - Guest Artist Horn Concert                      | MUS |
| 21 | Fall Jazz Concert: West Side Story                                  | MUS |
| 24 | Symphony Orchestra: <i>Opening Night!</i>                           | MUS |
| 26 | Symphony Orchestra Chamber Music Series: Marika Bournaki in Recital | MUS |
| 30 | Working: The Musical (thru 11/2)                                    | THD |
| 30 | Percussion Ensemble's 'Trick or Treat' Movie Night                  | MUS |

## NOVEMBER

- |    |  |     |
|----|--|-----|
| 6  | Brass in Bedell                          | MUS |
| 7  | Steel Drum Band 'Under the Dome'         | MUS |
| 7  | Biennial Faculty Exhibition (thru 11/25) | CRI |
| 18 | Wind Symphony: Carmina Burana            | MUS |
| 20 | Twelfth Night (thru 11/23)               | THD |
| 21 | Pluckophony Series: SEMO Guitar Ensemble | MUS |
| 25 | Southeast Choirs: A Festive Celebration  | MUS |

## DECEMBER

- |   |                                      |     |
|---|--------------------------------------|-----|
| 2 | Symphony Orchestra: Soaring Strings  | MUS |
| 5 | Senior Showcase I (thru 12/13)       | CRI |
| 5 | Big Band Holiday Jukebox (thru 12/6) | SPC |

- |   |  |     |
|---|--|-----|
| 7 | Symphony Orchestra Chamber Music Series: Frisson Ensemble, A Classic Christmas | MUS |
|---|--|-----|

## JANUARY

- |    |   |     |
|----|---|-----|
| 9  | Selections from the Permanent Collection (thru 1/25)          | CRI |
| 16 | Opera Double Feature: Dido and Aeneas & Alcina (also on 1/18) | MUS |

## FEBRUARY

- |    |  |     |
|----|--|-----|
| 5  | Winter Dance Collection (thru 2/8)                                     | THD |
| 8  | Symphony Orchestra Chamber Music Series: Valentina Igoshina in Recital | MUS |
| 13 | Clark Terry/Phi Mu Alpha Jazz Festival Concert                         | MUS |
| 15 | Exhibiting Excellence 48th High School Art Exhibit (thru 3/8)          | CRI |
| 22 | Dr. Patrick Hopkins and Matt Yount                                     | MUS |
| 23 | SEMO High School Honor Band  | MUS |
| 24 | Southeast Wind Symphony, <i>The Road is Life...</i>                    | MUS |
| 26 | Lanford Wilson Winner (thru 3/1)                                       | THD |

## MARCH

- |    |   |     |
|----|---|-----|
| 3  | Symphony Orchestra: Vaughn Williams <i>Dona Nobis Pacem</i> | MUS |
| 4  | Symphony Orchestra: Symphony Schools Concert                | MUS |
| 19 | Moving Perspectives (thru 3/21)                             | THD |
| 26 | Percussion Ensembles Theatre Concert and Studio Recital     | MUS |
| 27 | Juried Student Exhibition (thru 4/26)                       | CRI |
| 27 | Pluckophony Series: Night of Guitar and Voice               | MUS |

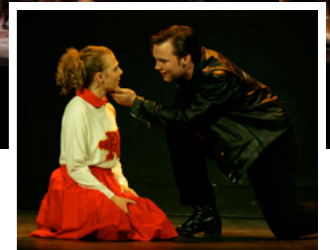
## APRIL

- |    |   |     |
|----|---|-----|
| 9  | <i>Legally Blonde</i> (thru 4/12)                                   | THD |
| 10 | Pluckophony Series: SEMO Guitar Ensemble                            | MUS |
| 12 | Symphony Orchestra Chamber Music Series: Edwards, Han, Hopkins Trio | MUS |
| 14 | Spring Jazz Concert: Swing Sammy Nestico                            | MUS |
| 16 | Southeast Choirs: <i>Heart and Soul</i>                             | MUS |
| 21 | University Bands Finale Concert                                     | MUS |
| 23 | <i>The Laramie Project</i> (thru 4/25)                              | THD |
| 24 | Symphony Orchestra: 25th Anniversary Celebration                    | MUS |
| 26 | Opera Scenes  | MUS |

## MAY

- |    |  |     |
|----|--|-----|
| 1  | Celebrate the Arts                                   | SPC |
| 5  | Senior Showcase II (thru 5/9)                        | CRI |
| 15 | Selections from the Permanent Collection (thru 6/15) | CRI |

CRI = CRISP MUSEUM / THD = THEATRE & DANCE / MUS = MUSIC / SPC = SPECIAL EVENT



## SEPTEMBER 25-28, 2025

### Grease

Sept. 25-27 at 7:30 p.m.

Sept. 27-28 at 2 p.m.

Bedell Performance Hall

\$26 In-Person / \$27.25 - \$30.50 Online

GREASE is the word! America's favorite musical returns to the River Campus to kick off the 25-26 season. After spending a hopelessly devoted summer with Sandy Dumbrowski, the new girl in town, Danny Zuko's world is thrown upside down when Sandy appears at Rydell High on the first day of school. What follows is a rock n' roll celebration of growin' up, cruisin' with friends and goin' steady. The Dobbins Conservatory production also features songs from the smash hit 1978 motion picture including "Sandy," "Hopelessly Devoted to You," "Grease" and "You're the One That I Want."

RSV / PG-13

CITY of CAPE  
GIRARDEAU



THEATRE & DANCE  
SERIES SPONSORS





OCTOBER 9-11, 2025

## Lanford Wilson Short Plays

7:30 p.m.

Rust Flexible Theatre

\$16 In Person / \$15.75 - \$19.25 Online

A diverse collection of the top 10 short plays selected at the 2025 Lanford Wilson New American Play Festival. An exciting evening of theatre, with themes of life, love, coming-of-age, power, relationships, and human nature.

GA / R



OCTOBER 30 - NOVEMBER 2, 2025

## Working: The Musical

Oct. 30 - Nov. 1 at 7:30 p.m.

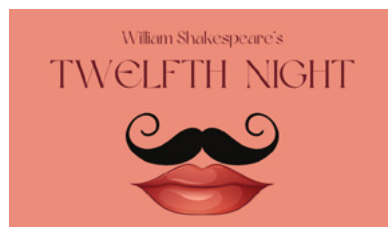
Nov. 1-2 at 2 p.m.

Rust Flexible Theatre

\$26 In-Person / \$27.25 - \$30.50 Online

Stephen Schwartz' hit Broadway musical, Working, paints a vivid portrait of the workers that the world so often takes for granted: the schoolteacher, the phone operator, the waitress, the millworker, the mason and the housewife, just to name a few. Nominated for six Tony Awards, this classic has been updated for a modern age, featuring new songs by Tony Award-winning Lin-Manuel Miranda, as well as favorites by Stephen Schwartz, Craig Carnelia, James Taylor, Micki Grant, and more.

GA / R



NOVEMBER 20-23, 2025

## Twelfth Night

Nov. 20-22 at 7:30 p.m. / Nov. 22-23 at 2 p.m.

Rust Flexible Theatre / General Admission

\$26 In-Person / \$27.25 - \$30.50 Online

Dobbins Conservatory is warming up the fall season with a fresh take on Shakespeare's comedy, Twelfth Night. This production will bring a sense of romantic whimsy and yearning to the coastal region of Illyria. Comedic mistaken identity and subterfuge abound, as the party rages, the laughter flows, and the live music plays on. Shakespeare's comedy is the story of mistaken identity, concealed truth, and comic revelation. GA / G



FEBRUARY 5-8, 2026

## Winter Dance Collection

Feb. 5-7 at 7:30 p.m. & Feb. 8 at 2 p.m.

Bedell Performance Hall

\$21 In-Person / \$21.50 - \$24.75 Online

An exciting dance concert featuring original works by professional and student choreographers that will showcase a variety of dance genres. GA / G

MARCH 19-21, 2026

## Moving Perspectives

7:30 p.m.

Rust Flexible Theatre / General Admission

\$16 In-Person / \$15.75 - \$19.25 Online

Featuring original works created and choreographed by the talented students in the Holland College, enjoy an evening of contemporary dance performances. GA / G



## WORLD PREMIERE

FEBRUARY 26 - MARCH 1, 2026

## Six Inches Above the Knee

Feb. 26-28 at 7:30 p.m. & Feb. 28 - March 1 at 2 p.m. / Rust Flexible Theatre

\$21 In-Person / \$21.50 - \$24.75 Online

Dobbins Conservatory proudly presents yet another exciting "world-premiere" of the winning full-length script by Sally Seitz, chosen from more than 900 submissions nationally at the famed 2025 Lanford Wilson New American Play Festival. "Okay, so, here's the thing...there's only one student speaker spot at The Harpeth Valley School for Girls 2013 graduation ceremony. And it will be absolutely over Mary Elizabeth, Mary Alice, Mary Louise, and M.KAT's DEAD BODIES that they miss the chance to tell the whole school what Coach Mag did to their best friend Mary Morgan. It's about time everyone heard her side of the story. Revenge is best served in a kilt!!!"

GA / R



# Theatre & Dance

## LEGALLY BLONDE *The Musical*

APRIL 9-12, 2026

### Legally Blonde

April 9-11 at 7:30 p.m. / April 11-12 at 2 p.m.  
Bedell Performance Hall  
\$26 In-Person / \$27.25 - \$30.50 Online

OMG, you guys! The blockbuster movie turned Broadway musical sensation will dance across the River Campus stage this spring. When the effervescent Elle Woods is dumped by her boyfriend, she follows him to Harvard Law School, determined to win him back. But what starts as a plot to regain her relationship turns into much more as Elle realizes her true potential—in law, love, and life. Legally Blonde is a hilarious, inspirational romp that proves you don't have to change who you are to achieve your dreams.

RSV / PG-13

TBD

### Restaurant Hop

4:30-7:30 p.m.  
Off-Campus at Various Local Businesses  
For tickets, call (573) 651-2149

Sample Cape's finest eateries while supporting Dobbins Conservatory students. Proceeds benefit students as they prepare and travel to the BFA Showcase in New York City.



APRIL 23-25, 2026

### The Laramie Project

April 23-25 at 7:30 p.m.  
Rust Flexible Theatre  
\$16 In Person / \$15.75 - \$19.25 Online

"Astonishing!" "An examination of the American psyche!" One of the most important and thought-provoking plays in the last quarter century, this story follows the death of Matthew Shepard, the university student whose murder in Laramie, Wyoming, became one of the highest profile hate crimes at the end of the twentieth century. Written by Moises Kaufman and the Tectonic Theater Project, this play is a portrait of an American town forced to confront itself, helping to change the way hate and love and acceptance are discussed in this country.

GA / R



With support from the Missouri Arts Council, a state agency.

# Music



SYMPHONY



JAZZ



OPERA



## / SYMPHONY SERIES



SEPTEMBER 19, 2025

### Pops in the Park!

7:30 p.m.

Dan Cotner Amphitheater at Capaha Park  
Free Admission

Enjoy an evening of show tunes, popular music, and patriotic classics under the stars. A perfect way to bring the summer to a close! This concert is presented to the community free of charge. GA / G

OCTOBER 24, 2025

### Opening Night!

7:30 p.m.

Bedell Performance Hall  
\$26 In-Person / \$27.25 - \$30.50 Online

The Southeast Missouri Symphony opens its twenty-fifth season with pianist Marika Bournaki performing Gershwin's flamboyant *Rhapsody in Blue*. Also on the program is American composer John Adams' explosive *Short Ride in a Fast Machine* and Berlioz's *Symphonie Fantastique*. RSV / G



DECEMBER 2, 2025

### Soaring Strings

7:30 p.m.

Bedell Performance Hall  
\$26 In-Person / \$27.25 - \$30.50 Online

Join us for a concert featuring the Southeast Missouri Symphony strings in a performance of Elgar's lush *Serenade for Strings* and Barber's timeless *Adagio for Strings*. This concert will also feature SEMO alum Jordan Redd and SEMO's own Nicholas Kenney performing Haydn's *Concerto for Two Horns*. The concert will close with Mozart's popular *Symphony No. 40*. RSV / G

MARCH 3, 2026

### Vaughn Williams *Dona Nobis Pacem*

7:30 p.m.

Bedell Performance Hall  
\$26 In-Person / \$27.25 - \$30.50 Online

The Southeast Missouri State University Choir and Choral Union join the symphony for a performance of Vaughn Williams' powerful *Dona Nobis Pacem*. This concert will also feature the winners of the Southeast Missouri Symphony's annual Concerto and Aria Competition. Also on the program is an exciting new composition by SEMO faculty member Frank Nawrot. RSV / G

MARCH 4, 2026

### Symphony Schools Concert

9:30 a.m. / Bedell Performance Hall

A repeat of selections from the March 3rd concert, presented to local school children. This concert is presented free of charge to the schools as an educational outreach activity for the symphony. Contact Dr. Hopkins at [phopkins@semo.edu](mailto:phopkins@semo.edu) to reserve space for your school. GA / G



APRIL 24, 2026

### 25th Anniversary Celebration

7:30 p.m.

Bedell Performance Hall  
\$26 In-Person / \$27.25 - \$30.50 Online

Come celebrate 25 years of the subscription series and the Symphony Society! Our Conductor Laureate Dr. Sara Edgerton returns to the podium for a performance of Beethoven's *Triple Concerto* featuring pianist Emiko Edwards, our concertmaster Sophia Han, and Artistic Director and Conductor Patrick Hopkins. Maestro Hopkins will close the season with a performance of Mahler's monumental *Symphony No. 1 "Titan"*. RSV / G

## / CHAMBER SERIES

OCTOBER 26, 2025

### Marika Bournaki in Recital

3 p.m.

Shuck Music Hall  
\$16 In-Person / \$15.75 - \$19.25 Online

Join guest pianist Marika Bournaki for an afternoon of solo piano and chamber music with SEMO faculty Dr. Sophia Han and Dr. Patrick Hopkins. GA / G



DECEMBER 7, 2025

### Frisson Ensemble: A Classic Christmas

3 p.m.

Bedell Performance Hall  
\$26 In-Person / \$27.25 - \$30.50 Online

Get your holiday season off to a festive start with the New York based Frisson Ensemble. Music from the Nutcracker Suite, "Winter" from Vivaldi's Four Seasons, Bach's *Brandenburg No. 4*, *Carol of the Bells*, a Christmas Jazz Suite, and traditional Christmas Carols. RSV / G



### FEBRUARY 8, 2026 Valentina Igoshina in Recital

3 p.m.

Shuck Music Hall  
General Admission

\$16 In-Person / \$15.75 - \$19.25 Online

We welcome back to the River Campus an audience favorite, pianist Valentina Igoshina, for a solo piano recital. GA / G

APRIL 12, 2026

### Edwards, Han, Hopkins Trio

3 p.m.

Shuck Music Hall  
\$16 In-Person / \$15.75 - \$19.25 Online

In anticipation of the 25th anniversary celebration, join Emiko Edwards (piano), Sophia Han (violin), and Patrick Hopkins (cello) for an afternoon featuring staples of the piano trio repertoire. GA / G

## / JAZZ SERIES

### OCTOBER 21, 2025 Fall Jazz Concert: West Side Story

7:30 p.m.  
Bedell Performance Hall  
\$16 In-Person / \$15.75 - \$19.25 Online

The SEMO Jazz Bands will bring you to the Upper West Side of Manhattan in New York City to reimagine Leonard Bernstein's West Side Story. GA / G



### FEBRUARY 13, 2026 Clark Terry Jazz Festival Concert

7:30 p.m.  
Bedell Performance Hall  
\$16 In-Person / \$15.75 - \$19.25 Online

The 26th annual Clark Terry / Phi Mu Alpha Jazz Festival concert will feature a special guest musician Jay Webb, along with the SEMO Jazz Bands for an evening of spectacular jazz. GA / G

Jazz Series Sponsor



### APRIL 14, 2026 Spring Jazz Concert: Swing Sammy Nestico

7:30 p.m.  
Bedell Performance Hall  
\$16 In-Person / \$15.75 - \$19.25 Online

Experience SEMO Jazz Bands Swing Sammy Nestico under the direction of Dr. Felipe Brito. Nestico is best known for his arrangements for the Count Basie orchestra and Hollywood movies such as Mission Impossible, Charlie's Angels, and The Color Purple. GA / G

### AUGUST 26, 2025 Chapa & Yount in Recital

7:30 p.m. / Shuck Music Hall  
Free

Join saxophonist Michael Chapa and pianist Matt Yount for an eclectic evening of music featuring selections from Astor Piazzolla's passionate Histoire du Tango, Erwin Schulhoff's jazz-inspired Hot Sonata, Robert Muczynski's haunting yet invigorating Sonata for alto saxophone and piano, and more! This special night will also showcase additional guest faculty artists in intimate chamber music settings, celebrating Professor Chapa's debut recital at SEMO. GA / G



### SEPTEMBER 2, 2025 Brito & Lamont in Recital

7:30 p.m. / Shuck Music Hall  
Free

Dr. Felipe Brito, trombone, and Dr. Barbara Lamont, piano, play a repertoire of Brazilian, Italian, German, British, and American composers such as Bach, Nino Rota, Emiliana Sampaio, and Brian Lynn. GA / G

### SEPTEMBER 9, 2025 Dr. Chris Goeke: I Get By With A Little Help From My Friends

7:30 p.m. / Shuck Music Hall  
Free

Dr. Chris Goeke and Dr. Barb Lamont, with guests, present a fun and eclectic recital featuring literature from Bach to the Beatles. GA / G



### SEPTEMBER 28, 2025 From Tennessee, with Love: featuring Cellist Dr. Wesley Baldwin

3 p.m. / Shuck Music Hall  
Free

Dr. Wesley Baldwin, cello professor from UT Knoxville, joins Drs. Sophia Han, Patrick Hopkins, and Barbara Lamont to present a recital of string and piano chamber music. GA / G

With support from the Missouri Arts Council, a state agency.



AN OPERA TALE OF TRAGEDY AND COMEDY

### JANUARY 16 & 18, 2026 Southeast Opera Theatre: Double Feature

Jan. 16 at 7:30 p.m. & Jan. 18 at 3 p.m.  
Bedell Performance Hall  
\$21 In-Person / \$21.50 - \$24.75 Online

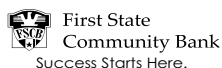
Tragedy and Comedy: The heart-rending love story of Dido and Aeneas presented in the original English will be paired with an abridged operatic farce: Alcina, with updated dialogue in English, and arias sung in Italian. GA / G

### APRIL 27, 2025 Opera Scenes

3 p.m. / Shuck Music Recital Hall  
\$16 In-Person / \$15.75 - \$19.25 Online

A selection of opera scenes and other dramatic works performed by the opera workshop class. GA / G

Opera Sponsored by





SEPTEMBER 28, 2025

## Dr. Leslie Jones and Dr. Barb Lamont: The Stories We Sing

6 p.m. / Shuck Music Hall  
Free

You're invited to an enchanting evening of storytelling through music, featuring works by Wolf-Ferrari, Debussy, Mahler, Saint-Saëns, Walker, and Sondheim. The program showcases the talents of Dr. Leslie Jones, contralto, and Dr. Barbara Lamont on piano. GA / G



OCTOBER 6, 2025

## Wind Symphony: ¡España!

7:30 p.m.  
Bedell Performance Hall  
\$16 In-Person / \$15.75 - \$19.25 Online

Celebrate the rhythm, color, and soul of Spain in a night of music that dances, sings, and stirs the spirit. From the festive flair of Luis Serrano Alarcón's *La Lira de Pozuelo*, to the reverent beauty of Joaquín Turina's *La Procession del Rocío*, this program captures the heart of Spanish tradition. The evening concludes with the dramatic and powerful *Marea Negra* by Antón Alcalde—a vivid symphonic work inspired by the wild Galician coastline and the emotional depth of the sea. It's a concert full of passion, procession, and pride. GA / G



OCTOBER 9, 2025

## Southeast Choirs: I Will Sing

7:30 p.m.  
Bedell Performance Hall  
\$16 In-Person / \$15.75 - \$19.25 Online

Join the University and Chamber Choirs for the first choral concert of the season where we will celebrate singing, community, and the impact of music on the world. Selections include Michael Englehardt's *I Will Sing* and an arrangement of India Arie's *I Am Light* by Darita Seth. GA / G

OCTOBER 10, 2025

## Pluckophony Series Faculty Recital: Jesse Steele

7:30 p.m.  
Shuck Music Hall  
Free

Featuring adjunct instructor Jesse Steele, this guitar recital will jump start a recital series for plucked strings, Pluckophony. The program will include lute, guitar and banjo as Jesse revisits music that secured his fascination with plucked instruments! GA / G



With support from the  
Missouri Arts Council,  
a state agency.



## A FREE & FAMILY-FRIENDLY MOVIE NIGHT!



OCTOBER 30, 2025

## Percussion Ensemble's Trick or Treat Movie Night

7:30 p.m. / Bedell Performance Hall  
Free

A spooky movie event featuring Tim Burton's *The Nightmare Before Christmas* and the Southeast Percussion Ensemble. This is a "PG" family-friendly event. The audience is encouraged to dress in Halloween costumes. Treats will be distributed after the concert. GA / PG

OCTOBER 14, 2025

## Johanna Yarborough - Guest Artist Horn Concert

7:30 p.m.  
Shuck Music Hall  
\$16 In-Person / \$15.75 - \$19.25 Online

LSU's Assistant Professor of Horn, Ms. Johanna Yarbrough, brings the horn to life in a thrilling recital with pianist Dr. Barb Lamont. GA / G



NOVEMBER 6, 2025

## Brass in Bedell

7:30 p.m.  
Bedell Performance Hall  
\$16 In-Person / \$15.75 - \$19.25 Online

A concert featuring SMO students and the brass faculty in a multifaceted array of chamber ensembles. The evening will conclude with a Mass Brass grand finale including musicians from our community! GA / G

NOVEMBER 7, 2025

## SEMO Steel, Under the Dome

7:30 p.m. / Academic Hall Auditorium  
Free

Enjoy an evening concert of traditional and popular tunes often associated with the Caribbean. GA / G

NOVEMBER 18, 2025

## Wind Symphony: Carmina Burana

7:30 p.m.  
Bedell Performance Hall  
\$16 In-Person /  
\$15.75 - \$19.25 Online

Carl Orff's *Carmina Burana* takes center stage in this thrilling concert of rhythm, drama, and raw power. With its unforgettable opening "O Fortuna," this monumental work explores the joys and unpredictability of life, love, and fate. Featuring a full wind ensemble in a bold and dramatic reimagining of Orff's masterpiece, this performance of *Carmina Burana* promises to be one of the most thrilling musical events of the season. GA / G

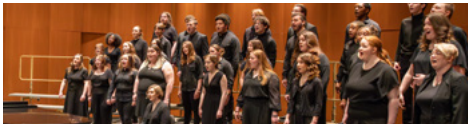


NOVEMBER 21, 2025

## Pluckophony Series: SEMO Guitar Ensemble

7:30 p.m. / Shuck Music Hall  
Free

The second in the new plucked series featuring the new Southeast Missouri Guitar Ensemble. This is a group of both Guitar majors and non-majors, music students and non-music students. You will hear all the guitar students play together, solos and smaller chamber works. GA / G



NOVEMBER 25, 2025

## Southeast Choirs: A Festive Celebration

7:30 p.m.  
Bedell Performance Hall  
\$16 In-Person / \$15.75 - \$19.25 Online

The University Choir, Chamber Choir, and Choral Union combine forces with brass, piano, and string quartet for a concert to ring in the holiday season. The choirs will present some familiar favorites as well as other masterpieces from the choral canon, including Arvo Pärt's glorious Magnificat and Dan Forrest's arrangement of Angels We Have Heard on High. GA / G

FEBRUARY 22, 2026

## Hopkins & Yount in Recital

3 p.m. / Shuck Music Hall  
Free

Enjoy an afternoon of music for cello and piano. Works by Boccherini, Bruch, Paganini & more!  
GA / G

FEBRUARY 23, 2026

## SEMO High School Honor Band

7 p.m. / Bedell Performance Hall  
Free

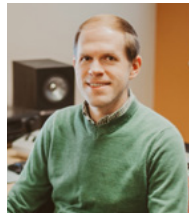
Join us for an unforgettable evening as outstanding student musicians from over 40 high schools across the region come together to celebrate the power of music. The SEMO High School Honor Band Concert features talented young performers working side-by-side with university faculty and guest conductors in a culminating performance that showcases their hard work, dedication, and musical growth. GA / G

FEBRUARY 24, 2026

## The Road is Life: The Music of James David

7:30 p.m.  
Bedell Performance Hall  
\$16 In-Person / \$15.75 - \$19.25 Online

The SEMO Wind Symphony presents The Road is Life: The Music of James David, an evening dedicated to the powerful and expressive works of composer James David, live in residence at Southeast. The program features the world premiere of his Symphony No. 2, a work inspired by the voices and landscapes of the Beat Generation, and a special performance of My Lyre Within the Sky, conducted by Randell Bertsche in memory of his brother, Jeremiah. This moving and innovative concert highlights the emotional depth, imagination, and contemporary relevance of one of today's leading voices in wind band music. GA / G



FEBRUARY 28, 2026

## Jonathan Young - Guest Pianist

6 p.m. / Shuck Music Hall  
Free

Cape/Jackson native Jonathan Young, faculty member at Purdue University - Fort Wayne, will present a piano recital of works by Albeniz, Liszt and Ginastera. GA / G



MARCH 26, 2026

## Percussion Ensemble's Theatre Concert and Studio Recital

7:30 p.m. / Rust Flexible Theatre  
Free

An annual concert in the Rust Theatre, featuring the Southeast Percussion ensemble and Percussion studio. GA / G

APRIL 10, 2026

## Pluckophony Series: Night of Guitar & Voice

7:30 p.m. / Shuck Music Hall  
Free

Closing of the new plucked strings concerts again featuring the SEMO guitar ensemble. As well as guitar student solos. This program will also feature children from the music academy guitar ensemble playing in a combined guitar orchestra with the university students. GA / G

APRIL 16, 2026

## Southeast Choirs: Heart and Soul

7:30 p.m.  
Bedell Performance Hall  
\$16 In-Person / \$15.75 - \$19.25 Online

The last choral concert of the season brings the University Choir, Chamber Choir, and Choral Union together for an exploration of love and the human condition. The choirs will perform individually as well as join forces for a culmination that is sure to dazzle! Eric Barnum's Afternoon on a Hill, an arrangement of You Are the New Day by Jake Narverud, and Moses Hogan's epic Hold On! will be featured. GA / G



APRIL 21, 2026

## SEMO Bands Finale Concert

7:30 p.m.  
Bedell Performance Hall  
\$16 In-Person / \$15.75 - \$19.25 Online

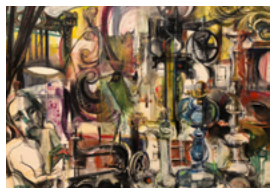
Join us as we close the curtain on an unforgettable year of music-making at Southeast Missouri State. The concert features the Southeast Wind Symphony and University Concert Band in a joyful and reflective evening celebrating our students, their achievements, and the powerful role of music in campus life. From dynamic works to heartfelt moments, this final performance honors the growth, dedication, and spirit of our ensembles. GA / G

With support from the  
Missouri Arts Council,  
a state agency.





(573) 651-2260 / [semo.edu/museum](http://semo.edu/museum) / 518 S. Fountain, Cape Girardeau, MO  
Open Monday-Friday, 9 a.m.-5 p.m. / Weekends, 1 p.m.-4 p.m.



Charles Keller © 1968

JULY 1 - AUGUST 17, 2025

## Selections from the Permanent Collection: New & Favorites

This exhibition features new acquisitions and old favorites from the museum's collection.

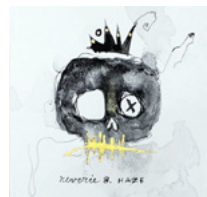


Baby Face © 2025

JULY 1 - AUGUST 17, 2025  
**Transition Space: Benjie Heu**

Reception: July 11, 4-8 p.m.

The artist uses simple but richly textured surfaces to easily transform relatable and often overlooked anxieties of everyday life. Anxieties such as the frailty of our bodies, the specter of chemical dependency, religious uncertainty and family dynamics create obstacles to be faced by the viewer.



Skull Lanie Gabbard © 2025

NOVEMBER 7-25, 2025  
**Biennial Faculty Exhibition**

Reception: Nov. 7, 4-8 p.m.

This broad sampling of media encompasses a wide range of studio practices and features ceramic, painting, drawing printmaking sculpture and more.



Photo by Jim Phillips

DECEMBER 5-13, 2025  
**Senior Showcase I**

Reception: Dec. 5, 4-8 p.m.

Graduating seniors produce their final exhibition as SEMO students.

SEPTEMBER 2 - OCTOBER 19, 2025

## Shutter and Sound: The Jazz Photography of Bob Wiloughby

Reception: Sept. 5, 4-8 p.m.

Willoughby photographed jazz greats such as Ella Fitzgerald and Louis Armstrong, among others. The 50 images included in the exhibit reflect the dynamic jazz scene of the 1950s, a time —in the words of Dave Brubeck — “of youth, exuberance, hope, and change.”



Miles Davis Shrine © 1950

JANUARY 9-25, 2026

## Selections from the Permanent Collection: Photos & Prints

This exhibition features new acquisitions and old favorites from the museum's collection.

FEBRUARY 15 - MARCH 8, 2026

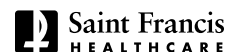
## Exhibiting Excellence: 48<sup>th</sup> Annual Juried High School Student Exhibition

Sponsored by Saint Francis Healthcare.

Reception: Feb. 15, 1-4 p.m.

Awards: Feb. 15, 3 p.m.

Regional high school juniors and seniors from southeast Missouri demonstrate their artistic visions.



Rae Perry © 2025



Abby Koch © 2025

MARCH 27 - APRIL 26, 2026

## Annual Juried Student Exhibition

Reception Mar. 27, 4-8 p.m. with awards at 5 p.m.

Department of Art and Design students showcase their varied talents and skills.

MAY 1-9, 2026

## Senior Showcase II

Reception: May 1, 4-8 p.m.

Graduating seniors produce their final exhibition as SEMO students.

MAY 15 - JUNE 15, 2026

## Selections from the Permanent Collection: Sculptures

This spring exhibition features new acquisitions and old favorites from the Crisp museum's collection.



# Special Events

DEC. 5 & 6, 2025

## Big Band Holiday Jukebox

Sponsored by Saint Francis Healthcare.

Bedell Performance Hall

\$26 In-Person / \$27.25 - \$30.50 Online

Step into the holiday season with flair at this beloved annual collaboration between the Southeast Jazz Studio and our gifted Theatre and Dance performers.



MAY 1, 2026

## Celebrate the Arts

Sponsored by Saint Francis Healthcare.

7:30 p.m. / Bedell Performance Hall

\$16 In Person / \$15.75 - \$19.25 Online

This vibrant annual event brings together the creative forces of the Holland College of Arts and Media for a compelling evening of live performance. It is a celebration of collaboration, featuring the Southeast Jazz Studio, the talented students from the Dobbins Conservatory of Theatre and Dance and Department of Music, original work by BFA students from the Department of Art + Design and the Department of Mass Media. More than

just a showcase of talent, the event serves as a creative platform for students to engage in cross-disciplinary artistic exploration, pushing the boundaries of their respective fields. Through this shared experience, students are able to present their innovative work to the broader community. This event plays a crucial role in supporting the students' professional growth, as proceeds help fund both national and international performance tours for Southeast students.



THE HOLLAND COLLEGE OF ARTS & MEDIA PRESENTS

# CELEBRATE THE ARTS



## Ticket Fees



### WHAT FEES DO WE CHARGE FOR TICKETS?

In person purchases at the River Campus Box Office do not incur ticket fees. Online purchases do include a per ticket fee that is paid to our ticketing provider Paciolan, this fee is calculated using the base ticket price. Online purchases allow patrons to customize their ticket delivery and feature a free option for Mobile Delivery using Apple or Google wallet. Patrons also have the option to receive their tickets by paying an additional delivery fee for Print at Home (\$1) or Will Call (\$5) delivery methods.

### REFUND POLICY:

All ticket sales are final. If an event is cancelled by the promoter, the base price plus fees will be refunded to the purchaser within 7-10 business days.

# Tickets

2025-2026 Season

@seRiverCampus



## GENERAL TICKET INFORMATION

### / Season Tickets - Renewals

Beginning June 27 at 9 a.m.

### / Season Tickets - New Sales

Beginning July 28 at 9 a.m.

### / Individual Ticket Sales

Beginning August 18 at 9 a.m.

## SEASON TICKET PACKAGES

For season ticket order forms, call or email the River Campus Box Office.

### / River Campus All Access Package

33 Events / \$399 per ticket

### / Holland College Master Package

15 Events / \$226 per ticket

### / Commerce Bank

#### Theatre & Dance Package

6 Events / \$122 per ticket

### / EBO MD

#### Symphony Package

4 Events / \$88 per ticket

### / Saint Francis Healthcare System

#### Special Events Package

3 Events / \$46 per ticket

*See What's Coming Up Next!*

**RiverCampus.org**

BUY TICKETS ONLINE 24/7

## BUY TICKETS

Tickets are available for purchase via phone or email, on our website, or in-person at the River Campus Box Office.

**CALL** (573) 651-2265

**EMAIL** [tickets@semo.edu](mailto:tickets@semo.edu)

**ONLINE** [RiverCampus.org](http://RiverCampus.org)

**VISIT** Box Office  
518 S. Fountain St.  
Cape Girardeau, MO  
63703

## BOX OFFICE HOURS

Monday - Friday, 9 a.m. - 4 p.m.

Open One Hour Before  
Ticketed Performances

## SEATING TYPES

**RSV - RESERVED SEATING**  
seats are assigned by section, row, and seat number

**GA - GENERAL ADMISSION**  
seats are not assigned and on a first-come-first-served basis

## EVENT RATINGS

**G - GENERAL AUDIENCE**

**PG - PARENTAL GUIDANCE  
SUGGESTED**

**PG13 - BEST FOR AGES 13+**

**R - BEST FOR AGES 17+**

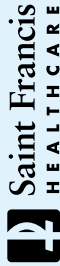


Non-Profit Org.  
U.S. Postage  
**PAID**  
Cape Girardeau, MO  
63701  
Permit No. 1000



Southeast Missouri State University  
Holland College of Arts and Media  
One University Plaza, MS 7895  
Cape Girardeau, MO 63701

## **SERIES SPONSORS**



## **TICKETS**

(573) 651-2265  
[RIVERCAMPUS.ORG](http://RIVERCAMPUS.ORG)