

SYMPHONY BAND MEMBERS

PICCOLO

Kim Wehmueeller St. Louis

FLUTE

Lora Kramme Arnold
Marsha Wedberg St. Louis
Nancy Wills Oak Ridge
Debra Goodman Cape Girardeau

OBOE

Patti Fischer Cape Girardeau
Mike Restivo Herrin, Illinois

CLARINET

Kathleen Woods Hillsboro
Cathy Richardson Hillsboro
Barry Rudert Poplar Bluff
Larry Mueth Mehlville
Judy Smith Potosi
Rebecca Schild Cape Girardeau
Linda Sue Rody St. Louis
Nona Morgan Arnold
Mark Engelhardt Concord Village
Mary Sue Downs Washington
Linda Godwin Jackson
Linda Ruengert House Springs

ALTO CLARINET

Karen Hodge Puxico
Wanda Henneke Jackson

BASS CLARINET

Dennis Els Hillsboro
Kay Bolin Jackson

CONTRA BASS CLARINET

Paul Winter Kirkwood

BASSOON

Judy Barker Brownsville, Tennessee
Shari Uelsmann Benton

TENOR SAXOPHONE

Walter Kuenzle Mehlville

BARITONE SAXOPHONE

David Baeumner Arnold

TRUMPET

Jim Sowers Houston
Alan McFerron Festus
Brad Hartman St. Louis
Mike Rodewald Washington
Brennan Colyer Jackson
Melvin Oberhaus Union

FRENCH HORN

Sue Davault Jackson
Steve Dawson Cape Girardeau
Kevin Curtis St. Louis

TROMBONE

Joe Allard Cooter
Roger Bolin Poplar Bluff
Mike Shy St. Louis
Richard Dunn Maplewood

BARITONE

Joe Pappas Festus

TUBA

Karl Fischer Cedar Hill
John McNeely Jackson

PERCUSSION

John Turner St. Louis
Max Eakin Bell City
Margaret Stewart Hillsboro
Debby Crafton St. Louis
Sid Gerlach St. Louis

TIMPANI

Tom Novell St. Louis

ALTO SAXOPHONE

Larry Bond Sikeston
Ray Adams Arnold

Cover design by Esther Heckathorn

SOUTHEAST MISSOURI STATE COLLEGE Division of Music

presents the



Academic Hall Auditorium
Thursday, April 27, 1972

Cape Girardeau, Missouri
8 p.m.

PROGRAM

March Five William P. Latham

In this march Mr. Latham incorporates sounds from "pop" music, including a modal chord scheme that is one of the most familiar adoptions of the rock artists. It is a unique approach to the march style and should prove to be a refreshing departure. William Latham has a long list of compositions for band to his credit and is a member of the faculty at North Texas State University.

Entry of the Gods into Valhalla from "Das Rheingold" . . Richard Wagner
Arr. by Charles O'Neill

The rise of the concert band, as such, took place during Wagner's lifetime (1813-1883). Although he showed little interest in the band, his influence on it, as in so many other areas, is unmistakable. His insistence upon improved wind instruments led to their greater technical facility, and his new concepts of wind sonorities often relegated the strings to a mere sustaining foundation. He was the first great composer to explore the full range of wind textures.

"Das Rheingold," the first of four operas of **Der Ring des Nibelungen** (1853-1874), ends as Wotan leads the Gods into Valhalla, their new abode. As they enter the palace, using a rainbow as a bridge, the music reflects the mysticism and grandeur of the moment.

Façade William Walton
Arr. by Robert O'Brien

- | | |
|--------------------------------|--------------------|
| I. Fanfare and Scotch Rhapsody | III. Old Sir Faulk |
| II. Popular Song | IV. Jodelling Song |
| V. Polka | |

While a student at Oxford University, Walton (b. 1902) became acquainted with the Sitwell trio of literary figures, thus inspiring him to write a "melodrama" for six players, plus a narrator who chanted sixteen poems of Edith Sitwell from behind a curtain on which was painted a huge face with a megaphone mouth. The score was completed in 1922, when Walton was only twenty years of age. The poems are experimental--more concerned with sound than meaning.

Walton revised the score in 1926, and later assembled from it two suites for orchestra. In 1931 Frederic Ashton made a choreographic version, and it still remains in the repertory of the Royal Ballet. As David Ewen has noted, the music is filled with "parody, burlesque, mock seriousness, tongue-in-cheek sentimentality, and calculated clichés." As for the title, a painter once said of Edith Sitwell: "Very clever, no doubt, but is she but a façade?"

Departure One John M. Higgins

Subtitled "Concert March for Winds and Percussion," this unusual work features the percussion section performing upon a full battery of twelve instruments.

INTERMISSION

**Rondo from the Quintet for
Clarinet and String Quartet, Op. 34** Carl Maria von Weber
Arr. by Jack Snavelly
Kathleen Woods, Clarinet

Known primarily as a composer of such operas as **Der Freischütz** and **Oberon**, Weber (1786-1826) included among his other works several virtuoso compositions for the clarinet. This **Rondo** is a sheer display piece for the clarinet featuring a recurring theme alternating with contrasting sections. In it Weber utilizes clarinet techniques to the fullest. It was completed in 1815, and dedicated to the celebrated clarinet artist Heinrich Baermann.

Mrs. Woods is a Senior music major from Hillsboro, Missouri. She is a student of Mr. David Green.

Patterns for Band Donald H. White

Donald White, a graduate of the Eastman School of Music and presently a professor at De Pauw University, has written many significant works for band. **Patterns for Band** alternates slow, lyrical sections with rapid sections of great rhythmic vigor and percussive-like quality. It was completed in 1969.

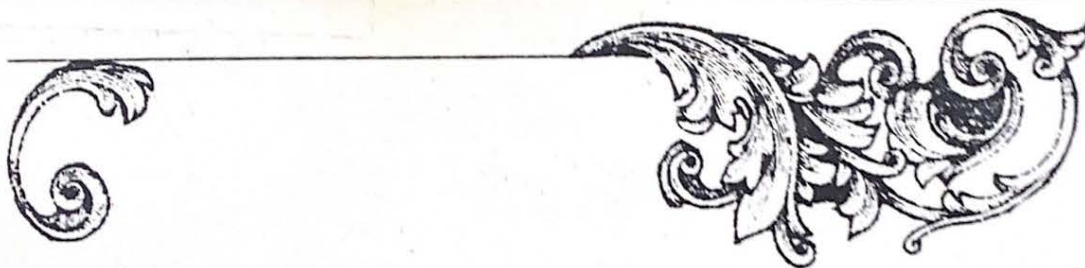
Suite of Old American Dances Robert Russell Bennett

- | | |
|-----------------|-----------------------|
| I. Cake Walk | III. Western One-Step |
| II. Schottische | IV. Wallflower Waltz |
| V. Rag | |

Robert Russell Bennett (b. 1894) is most famous for his orchestrations of countless Broadway musicals. He is also one of the most prominent arrangers and composers of band music. Concerning the work the composer writes: "There was no particular purpose in mind in the composition of the Suite except to do a modern and, I hope, entertaining version of some dance moods of my early youth. Another equally important purpose was to do a number without any production tie-up." The work was premiered by the University of Michigan band at the American Bandmasters Association meeting in 1951, with the composer conducting.

The Standard of St. George Kenneth J. Alford

This is another delightful English march by the composer of the famous **Colonel Bogey**.



1982 CONVENTION MISSOURI DISTRICT OPTIMISTS OLDTIMERS BREAKFAST

Master of Ceremonies Bill Cayse

Invocation Elwood Doss

Breakfast

Quartet Numbers

Elwood Doss

Bill Cayse

Tom Boudinot

Larry Young

Introduce Head Table Bill Cayse

Past Governors Charlie Wiles

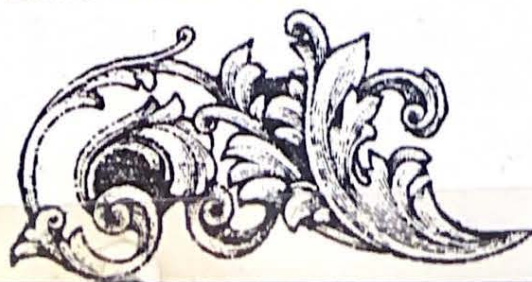
Oldtimers Standup Bill Cayse

Golden Eagles Marching Band
and

SEMO Sundancers Ronald Farver

Presentation Ronald Farver

Benediction Elwood Doss



Presented by
Golden Eagles Band
1960

LeRoy F. Mason

Oz Music Publishers



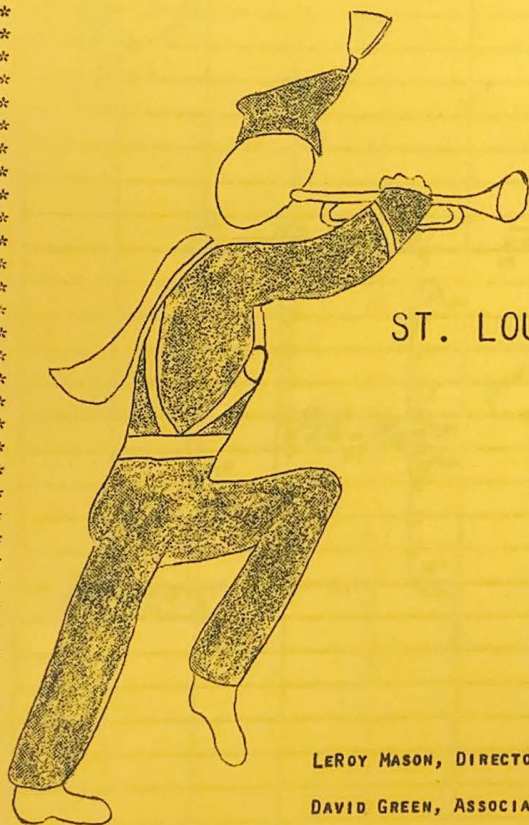
6875 EL CAJON BLVD.
SAN DIEGO, CALIF. 92115

Go! 'Big Red' Go! Fight! SEMO Fight!

Le Roy F. Mason

Complete Set \$2.50





THE GOLDEN EAGLES BAND

OF

SOUTHEAST MISSOURI STATE COLLEGE

CAPE GIRARDEAU, MISSOURI

ST. LOUIS CARDINALS - GREEN BAY PACKERS

HALFTIME SHOW

BUSCH MEMORIAL STADIUM

ST. LOUIS, MISSOURI

CBS NATIONAL TELEVISION

(IN COLOR)

LEROY MASON, DIRECTOR

DAVID GREEN, ASSOCIATE DIRECTOR

MONDAY NIGHT

OCTOBER 30, 1967

ALMA MATER SHOW - OCT. 7, 1967

HALFTIME

P.A.: SOUTHEAST MISSOURI STATE COLLEGE PROUDLY PRESENTS ITS GOLDEN EAGLE MARCHING BAND.

(BAND--ENTRY IN 5 LINES)

P.A.: YEARS AGO MRS. VERA BEAUCHAMP (BEECHAM) FOARD AND MISS WILHELMINA VIEH COMBINED THEIR TALENTS TO WRITE THE WORDS AND MUSIC FOR THE SOUTHEAST MISSOURI STATE COLLEGE ALMA MATER. TONIGHT, IN MEMORY OF THE AUTHOR AND COMPOSER OF THIS SONG THE GOLDEN EAGLES PRESENT A HALFTIME SHOW ENTITLED THE ALMA MATER.

(BAND--MISSOURI WALTZ--MAP OF MISSOURI)

P.A.: STUDENTS AND ALUMNI ALIKE HAVE COME TO LOVE OUR COLLEGE "ALMA MATER." IN MUSIC AND FORMATIONS, WE RESPECTFULLY RE-CREATE THE WORDS AND MUSIC THAT HAVE COME TO MEAN SO MUCH TO ALL OF US: *(Memories)*

P.A.: "HIGH ABOVE THE MISSISSIPPI, AGELESS IN MAJESTIC FLOW,
(BAND--ACADEMIC HALL--OL' MAN RIVER)
Memories

P.A.: RISE THY HALLS IN NATIVE GRANDEUR, BEACON LIGHT TO ALL BELOW.
(BAND--4 COLUMNS--HALLS OF IVY)
Rose for Cape Girardeau

P.A.: ROUND THEE SPRINGTIME FLINGS HER BLOSSOMS, JUNE IN VERDURE VEILS THY HILL,
(BAND--ROSE--ROSE FOR CAPE GIRARDEAU)
Memories

P.A.: AUTUMN PAINTS IN POIGNANT BEAUTY, WINTER'S SNOWS FALL SOFT AND STILL.
(BAND--SNOW-MAN--WINTER WONDERLAND)
Memories

P.A.: WITH THE PASSING OF THE AGES, BRIGHTER STILL THY LIGHT SHALL GLOW;
(BAND--BEACON LIGHT--WHEN I GROW TOO OLD TO DREAM)
Memories

P.A.: SONS AND DAUGHTERS MORE SHALL GATHER HERE TO LAUGH, AND LOVE, AND GROW.
(BAND--GRADUATION CAP--POMP AND CIRCUMSTANCE)
On Old Indians

P.A.: CAPE GIRARDEAU, ALMA MATER! FORWARD PRESS UNCEASINGLY,
(BAND--~~CAPE GIRARDEAU~~--ON OLD INDIANS)
Memories

P.A.: IN THY QUEST FOR TRUTH UNTRAMMELED, TILL HUMANITY IS FREE.
(BAND--"SWORD OF TRUTH"--BATTLE HYMN)
(BAND--ON OLD INDIANS--BLOCK M)

P.A.: WE TRUST THAT THE MESSAGE CONVEYED BY THESE LYRICS HAS RECALLED MANY NOSTALGIC MEMORIES. AS THE BAND PLAYS, WE INVITE YOU TO BLEND YOUR VOICES IN A TRIBUTE TO SOUTHEAST MISSOURI STATE COLLEGE--OUR ALMA MATER!
(BAND--ALMA MATER)

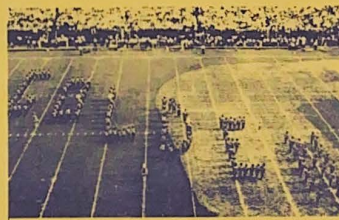
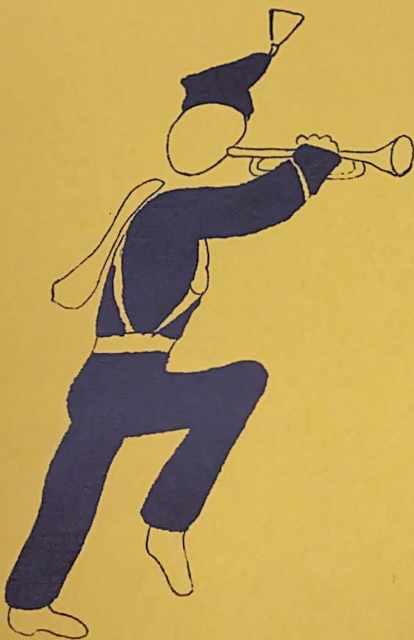
(BAND--ON OLD INDIANS--OFF FIELD)

SOUTHEAST MISSOURI STATE COLLEGE

proudly presents its

Golden Eagles

MARCHING BAND



in the
ORANGE BOWL

Sunday, January 5, 1969

Miami, Florida

LeRoy Mason, Director

David Green, Associate Director

during the halftime of the NFL Pro Bowl Play-Off Game

***** CBS NATIONAL TELEVISION *****



18 19 20 21 22 23 24 25 26 27 28 29 30

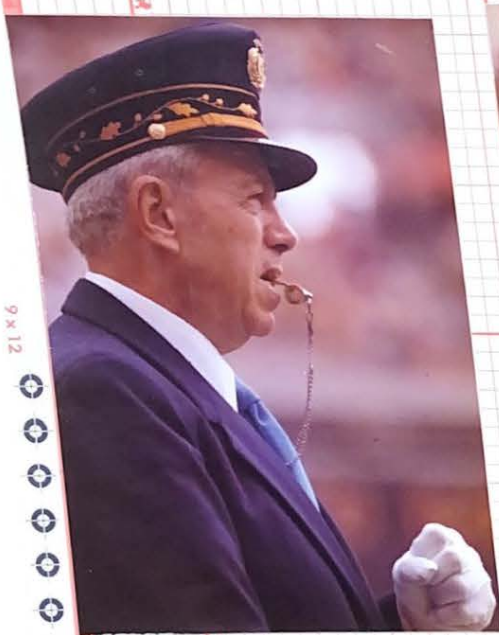


NAME ROT. NO. PG. NO. 211 POS. 601
 SEMSU CAPE GIRARDEAU MO
 PANEL PCT. 100% 66 AND STATE

CUSTOMER

Page No.

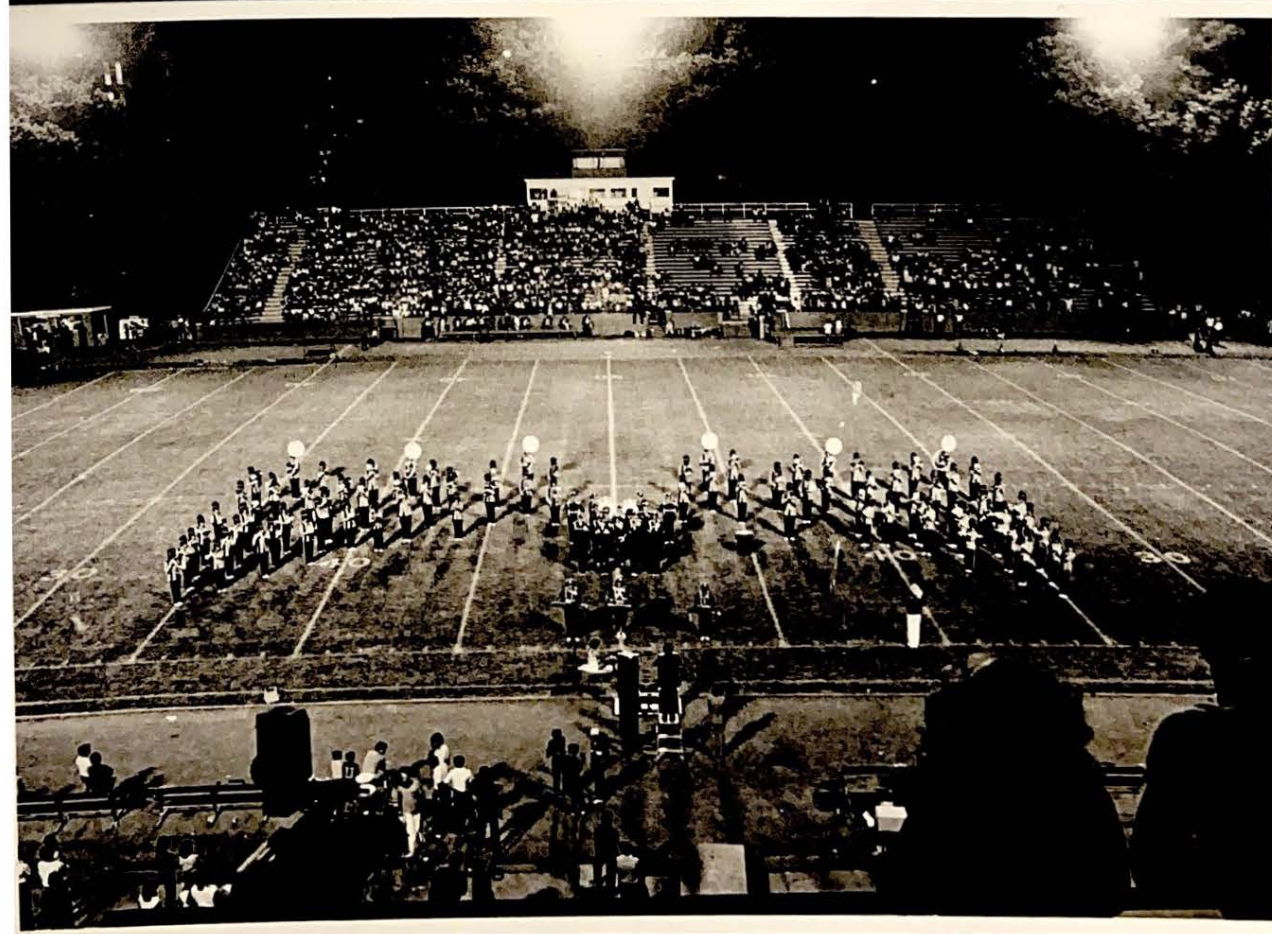
THE GOLDEN EAGLE MARCHING BAND
 FROM SOUTHEAST MISSOURI STATE
 COLLEGE--CAPE GIRARDEAU-MO.
 THE BAND IS DIRECTED BY
 LEROY MASON



Page No.

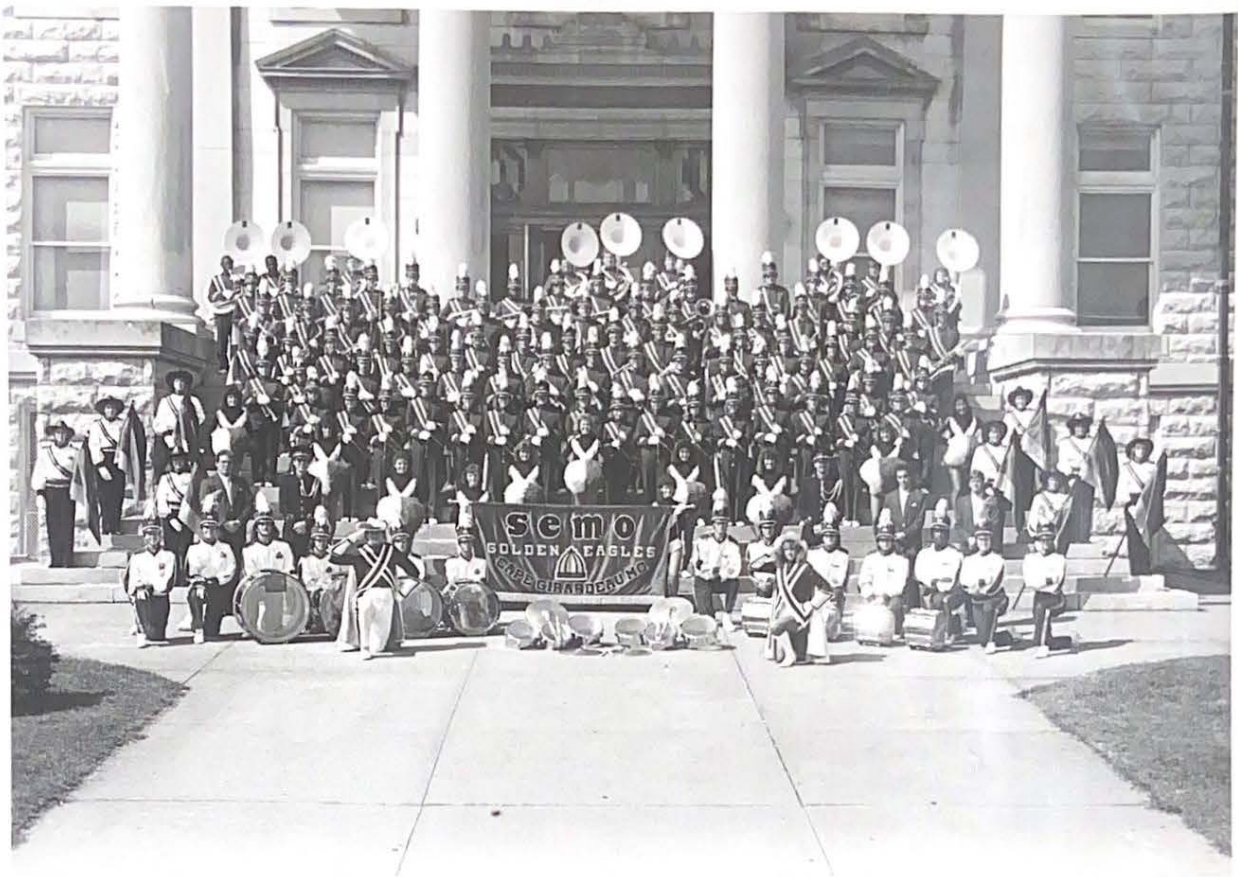
CUSTOMER

NAME ROT. NO. PG. NO. 210 POS.
 SENSU CAPE GIRARDEAU MO 601
 PANEL DOT











SOUTHEAST MISSOURI
STATE UNIV. BAND

LEROY MASON, DIR.

HALFTIME
ATLANTA FALCON GAME
SEPT. 22, 1974

Frank E. Wee

PRESIDENT

John H. Demos

ENTERTAINMENT DIR.

