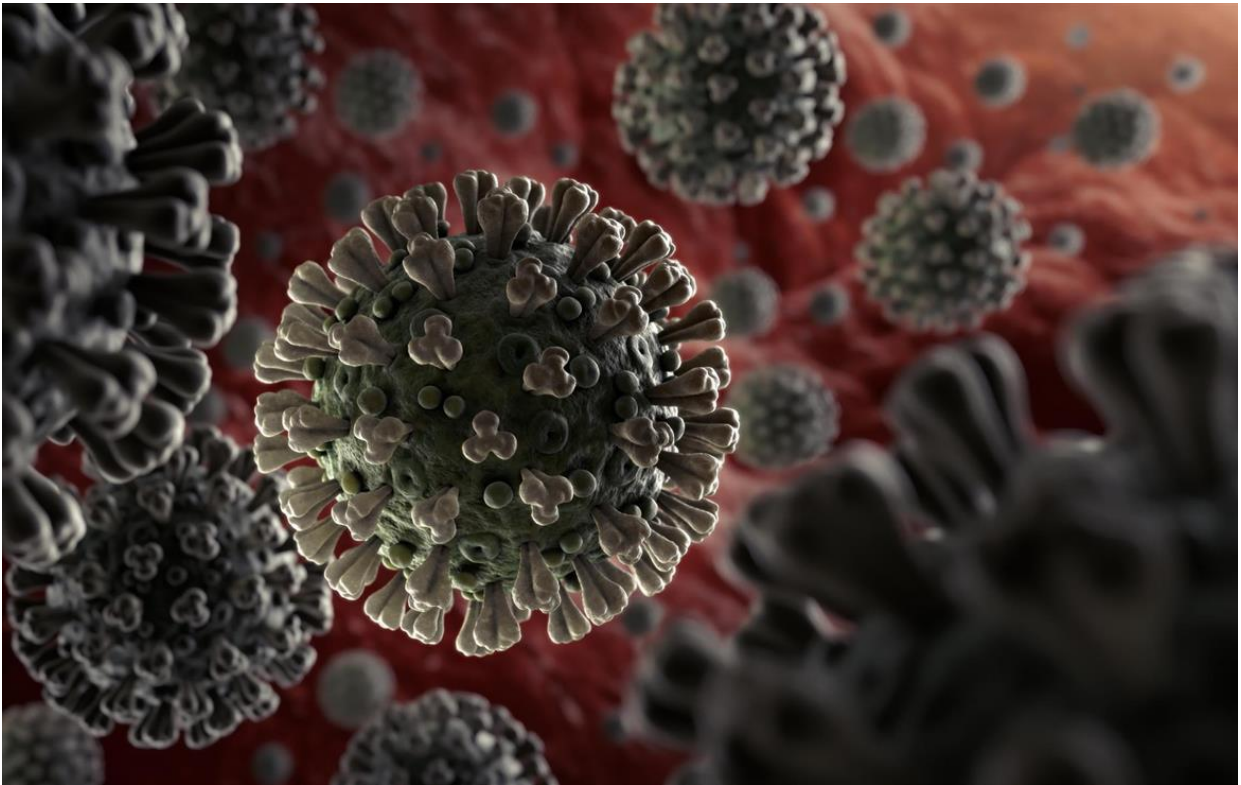


Fiscal Year 2020 Annual Report  
Student Life and Auxiliary Departments  
Associate Vice President for Student Life



CAMPUS HEALTH CLINIC / CAMPUS LIFE AND EVENTS SERVICES  
CHARTWELLS DINING SERVICE / GREEK LIFE  
OFFICE OF MILITARY & VETERANS SERVICES  
RECREATION SERVICES  
REDHAWK FOOD PANTRY / SOUTHEAST BOOKSTORE  
STUDENT GOVERNMENT / TEXTBOOK RENTAL



## TABLE OF CONTENTS

Campus Health Clinic .....	6
Campus Life and Events Services .....	7
<i>Student Life and Leadership Awards</i> .....	10
Chartwells .....	17
Greek Life .....	21
<i>5 Star Program</i> .....	24
<i>Greek Week Awards</i> .....	25
Office of Military and Veterans Services .....	29
Recreation Services.....	32
Residence Life .....	42
<i>Occupancy</i> .....	44
<i>Learning Communities</i> .....	50
<i>Housing COVID-19 Response</i> .....	54
Southeast Bookstore.....	56
Student Auxiliary Services.....	62
Student Government .....	64
Textbook Rental .....	69
<i>Redhawk Food Pantry</i> .....	70
Appendix A, Homecoming Parade, Window, Yard, & Banner Winners.....	71
Appendix B, Man & Woman of the Year, Overall Homecoming Winner.....	74
Appendix C, Greek Governing Council ( <i>IFC, NPC, NPHC</i> ) Presidents.....	78
Appendix D, Greek Fraternity and Sorority of the Year.....	80

## **Associate Vice President Year in Review**

The Office of Student Life works with a variety of different offices to provide a multitude of services and programs to the Southeast Missouri State University community. During fiscal year



2020 the campus was challenged with the response to the worldwide COVID-19 pandemic. Beginning March 20, 2020, the university moved to remote learning and teleworking by most staff. Students completed their classes virtually and the Office of Residence Life worked to have all, but about 100 students, move out of the residence halls. This major disruption of the campus suspended many campus efforts and programs. Even as we managed this major disruption of the campus, the offices within Student Life worked to provide service to our students, and in some cases, were among the very few people that were still required to be on campus to provide services such as dining and access to academic course materials.

The success of programs and services within all the offices represented in this annual report are the result of efforts by many committed professionals. Outlined below are the graduate assistant, clerical/technical, and professional staff that deserve the credit for each success outlined in this program and for being competent professionals in responding to the fiscal challenges experienced in fiscal year 2020.

### **Campus Health Clinic**

Kim Dennis, Rachael Jenkins APRN, FNP-BC, Christina Martin RN, Tameka Ballentine

### **Campus Life and Events Services**

Michele Irby, Gretchen Grojean, Joanna Shaver, Tiffany Comfort, Jim Essner, Andrea Buerck, Brittany Panus, Karley Smith, Kacee Kullum

### **Chartwells**

Matthew Ludwig, Cheryl Graf, Alicia Ticer, Christie McIntosh, Kevin Yarborough, Rukhsar Arzoo, Jeremy Bourland, Kierstin Brown, Rosebud Palermo

### **Greek Life**

Bruce Skinner, Alexana Koishor, Tony Dees

### **Office of Military and Veterans Services**

Amanda Woods, Katie Friese

### **Office of Residence Life**

Kendra Skinner, Allan Mauk, Neil Conrad, Kim McElroy, Allie Wisker, Garrett Downing, Christie Gibbons, Karimah Banks, Malana Bradford, Amanda Carpenter, Duane Jones, Jacki Lynch, Caitlin Reicher, Holly Ritter, Clint Ashner, Kyle Howley, Alaina Mikkelsen, Mikayla Patterson

**Recreation Services**

Mike Buck, Eric "Red" Redinger, Chad Sierman, Sara Wagganer, Crystal Dooley,  
Kim Wilkerson, Cory Brock, Tyler McClemore, Raleigh Davis, Michael Cope, Eric Williams,  
Hannah Weathers

**Southeast Bookstore**

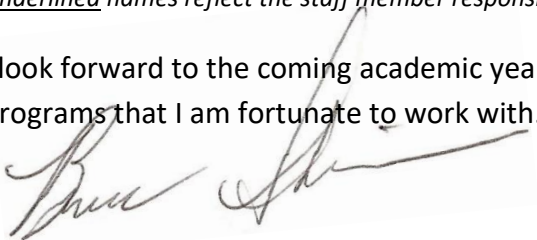
Barbara Breedon, Falon Bentz, Mandi Gean

**Textbook Rental**

Jane Kurre, Cindy Balsmann

*Underlined names reflect the staff member responsible for the overall operation of the department.*

I look forward to the coming academic year and remain thankful for the students, staff, and programs that I am fortunate to work with.

A handwritten signature in cursive script, appearing to read "Bruce Skinner", written in black ink on a light-colored background.

Bruce Skinner, Ed.D, CASP  
Associate Vice President for Student Life

## Campus Health Clinic

Beginning in 2008, the University and Southeast Missouri Hospital (now Southeast HEALTH) partnered to provide health services to students and employees of the University. The clinic provides primary medical care to the students, faculty, and staff via



Registered Nurses, Licensed Practical Nurses and Advanced Practice Nurse Practitioners. Services include health treatment such as physical exams, laboratory services, immunizations, and allergy shots, medical procedures, prescription services, special equipment needs (ice packs/crutches); well women exams and assessment and treatment for any illness/injuries. Students and employees can have the services provided billed to insurance, the Clinic is required to accept the University's health care insurance provider, can self-pay or have their balance assessed against their student/employee account.

On March 23, 2020 the Campus Clinic staff were furloughed due to the Covid-19 pandemic. The clinic re-opened July 6, 2020 and began Polymerase chain reaction (PCR) testing for symptomatic students, faculty and staff.

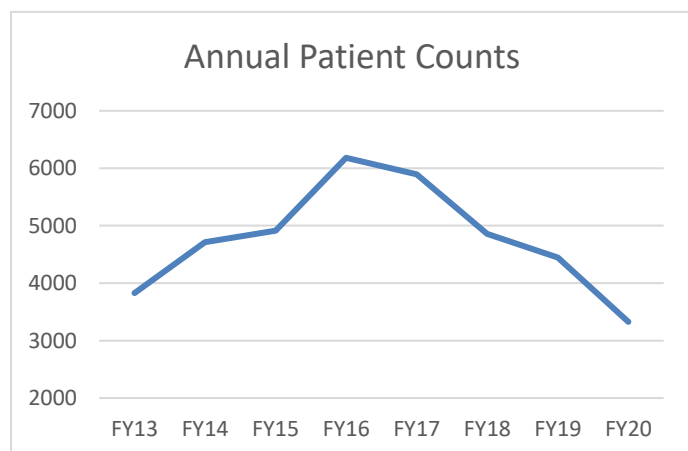
### Contract Details

- All employees, services, and equipment are provided by Southeast HEALTH.
- The University permits all charges not covered by insurance or self-pay to be charged against a student or employee's account.
- Students are not required to have health insurance or show ability to pay in order to receive medical services.
- The University guarantees to cover losses at the Clinic up to \$145,000 annually. Any loss above \$145,000 is shared equally. Any profit from the Clinic's operation is shared equally.
  - Operating loss FY20, \$109,519
  - Operating loss FY19, \$145,987
  - Operating loss FY18, \$173,685

### Usage

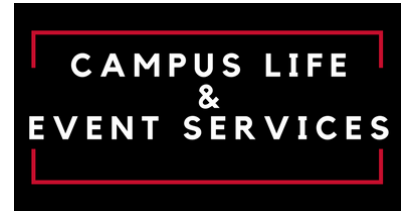
Patient counts for the past three years:

- FY20, 3,326
- FY19, 4,447
- FY18, 4,858



## Campus Life and Events Services

Campus Life and Event Services has responsibility for the co-curricular educational experience of all Southeast Missouri State University students. This responsibility includes programs for leadership development, social engagement, community service, social justice topics, and leadership for the student organizations.



The office hired a new Administrative Assistant in November, Ms. Andrea Buerck, who came to the department from the Registrar's Office.

### Mission

Campus Life & Event Services creates programs, facilities, and services that provide opportunities that foster engagement, growth, and development of students as well as connections to the campus and the community.



### Campus Advising

- The Director of Campus Life serves as the adviser for Student Government
- The Coordinator for Campus Programming serves as the adviser for the Student Activities Council and manages SeLink
- The Coordinator for Leadership and Involvement serves as the adviser to the First-Year Leadership Program, Camp Redhawk, Emerging Leader and President's Leadership Academy programs

### Major Campus Life Programs and Events

- Camp Redhawk
- Carpe Diem
- Emerging Leaders
- Family Weekend
- First-Year Leadership Program
- Homecoming
- Martin Luther King Planning Committee
- President's Leadership Committee
- Southeast Serves
- Student Life and Leadership Awards

### Programs and Accomplishments

**Opening Week** The kick-off of the academic year allowed for many opportunities to engage our students.

- Move-In Bash 3000 (FY20) students
- Ice Cream Pig-out and Magician Kid Ace 1800 and 400 (FY20) students

**Engagement Day** programs:

- Involvement Fair 650 students and 97 organizations (FY20)
- Service project 11 (FY20) students

- Canvas Painting 175 (FY20) students
- What is FyLP? 182 (FY20) students
- Welcome Back Movie-*Avengers: endgame* 141 (FY20) students

**Family Weekend** The annual event was held on September 20-22, 2019 with most events happening on Saturday, September 21. A few highlights of Family Weekend were activities hosted at the library including a scavenger hunt and a tour of the Rare Book Room, Breakfast with the President, Dome tours, community bus tours and interactive games at the University Center. A social event was held in the evening at Dogwood Social House with the Johnny Henry band as the headliner.

**Homecoming** The theme for Homecoming 2019 was *Southeast: A Tale Like No Other (Children’s Books)* and was hosted on October 26, 2019. The week of events included Field Day and Spirit Rally, the Talent Show, the selection and coronation of Man and Woman of the Year, Redhawk Chalk Walk, online competitions and the parade (which was cancelled due to unfavorable weather conditions).



A complete list of Homecoming Awards and winners, can be found in Appendix A & B.

- Appendix A includes the parade, window art, yard art, and banner winners since 1999.
- Appendix B includes the Man and Woman of the Year winner, including all finalists and the first, second, and third place winners for overall Homecoming since 1996.
- Fall 2019 Homecoming Step Show Winners were Delta Sigma Theta and Phi Beta Sigma.

**Carpe Diem** The campus-wide annual celebration of cultural diversity was held on Saturday, November 16 with approximately 700 students, faculty and staff in attendance. There were 16 cultural booths hosted by student representatives who handed out a traditional beverage or treat, quizzed or shared cultural information with guests, and coordinated an activity, such as trying on traditional clothing at a photo booth. Chartwells Dining and Catering assisted student groups in preparing 6 different international dishes for the buffet. which was served by student volunteers and staff from the Office of International Education & Services. On stage, students performed traditional dances, played cultural music while singing in various languages, and showed off their traditional clothing in an international fashion show.

**Community Service** Volunteerism and service have become a major focus for Campus Life & Event Services. Highlights of the program were:

- Volunteer Fair-On, August 29, 2018, 21 agencies participated. A new logo was created after a call was put out for student designs





- Monthly service projects were hosted by Campus Life including Crafting for a Cause, leaf raking, Habitat for Humanity, SEMO Food Bank, a Safe Trick-or-Treat co-sponsored with Vandiver Hall and Gamma Sigma Sigma.
- SE Serves program conducted fundraisers through Textbook Rental and Walmart to alleviate departmental and participant cost.
- Originally schedule for April 17-18, 2020, SE Serves: Serve 2020 was cancelled due to the University and students working and learning remotely.



### Campus Leadership Program

Students have opportunities for leadership development at different levels of their undergraduate experience, beginning with CampRedhawk the summer attending Southeast, followed by the First-year Leadership Program in the fall semester, and Emerging Leaders, a spring-semester program for first and second-year undergraduates. The top tier of our Southeast Leadership Programs is the President’s Leadership Academy, for which junior and seniors are nominated due to their demonstrated campus leadership.



**Camp Redhawk** Camp Redhawk is a summer leadership camp designed for new students preparing to enter their first semester at Southeast Missouri State University. The program offers an introduction to campus life and traditions, immersion into school spirit, and a chance for campers to meet other students. Due to Covid-19, only two sessions were offered from the original three sessions scheduled.

<b>Program</b>	<b>Participation time period</b>	<b>Participation</b>
<i>Camp Redhawk</i>	Summer before classes	134 participants (only two sessions)
<i>First Year Leadership Programs FYLP</i>	First semester	66 participants graduated
<i>Emerging Leaders</i>	2 <sup>nd</sup> semester or Sophomore year	39 participated/ 32 graduated
<i>Presidents Leadership Academy</i>	Junior or Senior year	20 participated

## **Student Life and Leadership Awards**

The Student Life and Leadership Awards program was established to honor students, student organizations, and University professionals who support the intellectual, professional, personal, social, and cultural needs of the community. The Provost Awards for Teaching Excellence awarded to faculty were added to this awards program this year. Due to COVID-19, in lieu of our usual banquet to celebrate the award winners, video slideshow announcements for each awards category were created and posted to social media, and plaques were mailed to recipients.

## **2019 – 2020 STUDENT LIFE & LEADERSHIP AWARDS**

### **President’s Spirit of Southeast Award**

Andrew Behrmann  
Francesca Bucci  
Roshell Tauro  
Clayton Vassalli  
Clay Wittig  
Kseniya Zonova

### **First-Year Student Awards**

Anna Carpenter  
Charles “Luke” Collins

### **University Contributor Awards**

Jeanne Harris – Faculty, College of Humanities and Social Sciences: Department of Communication Studies & Modern Languages  
WyKeshia Atkins – Staff, Director of Learning Assistance Programs  
Kayla Parham – Student

### **Student Life Achievement Recognition Awards**

Dr. Ecaterina Stepaniuc – Faculty, Holland College of Arts and Media: Department of Mass Media  
Bill Brucker – Staff, Locksmith for Facilities Management  
Johanna Oster – Student

### **Civil & Global Engagement Awards**

Dr. Leisa Marshall – Faculty, Harrison College of Business and Computing: Department of Accounting, Economics, and Finance  
Xavier Payne – Student  
Grace Powderly – Student

### **Outstanding Student Organization Awards**

Southeast Student Missouri State Teachers Association (SMSTA)  
National Panhellenic Council

## **Outstanding Advisor Award**

Dr. James Brubaker – Journey Literary Organization

## **2019 – 2020 STUDENT ACADEMIC AWARDS**

### **Provost Awards**

Holland College of Arts and Media; April Bassett

Harrison College of Business and Computing; Adam Thomas

College of Education, Health, and Human Studies; Kaitlyn Nale

College of Humanities and Social Sciences; Joel Ricker

College of Science, Technology, Engineering, and Mathematics; Kyleen May

Graduate Category; Molly Brakhane – College of Science, Technology, Engineering, and Mathematics

### **Experiential Learning Awards**

Holland College of Arts and Media

Theatrical Combat Intensive, Coordinated by Bart Williams for Theater Students:

*Alex Burke, Trenden Everett, Alec Hatchell, Mac McNamara, Trey Marlette, Justin Panacchia, Jordan Raben, Jake Rattan, and Corie Williams*

Harrison College of Business and Computing

Institute for Cybersecurity Student Workers:

*Jack Gavin, Giovanni Licameli, Max Foster, and Joseph Kossack*

College of Education, Health, and Human Studies

Dr. Jeremy Barnes' HL 490 Health Promotion Planning and Evaluations Class:

*Sam Butler, Brigid Chura, Trevor Hagan, Brooke Korich, Bethany Mirly, Jessica Niedbalski, Joseph Rubach, Carson Schaefer, Dillon Skinner, and Elizabeth Sweet*

College of Humanities and Social Sciences

Tara Johnston

College of Science, Technology, Engineering, and Mathematics

Ashley Vonder Haar

Graduate Category

Mallory Westerman – Harrison College of Business and Computing

## **2019 – 2020 FACULTY AWARDS:**

### **Provost Awards for Teaching Excellence**

#### **Excellence in Flexible Teaching and Learning Innovation Award**

Dr. Leisa Marshall – Harrison College of Business and Computing: Department of Accounting, Economics, and Finance

### **Excellence in Online Teaching and Learning Award**

Dr. Susan Fulton – College of Education, Health, and Human Studies: Department of Communication Disorders

### **Excellence in Promoting Engaged Learning Award**

Dr. Joni Hand – Holland College of Arts and Media: Department of Art and Design

### **Excellence in Supporting Student Success Award**

Bart Williams – Holland College of Arts and Media: Department of Theatre and Dance

### **Excellence in Teaching General Education Award**

Dr. David Cunningham – College of Science, Technology, Engineering, and Mathematics: Department of Chemistry and Physics

### **Excellence in Supporting Undergraduate Research Award**

Dr. William Weber – Harrison College of Business and Computing: Department of Accounting, Economics, and Finance

### **Excellence in Supporting Graduate Research Award**

Dr. Dustin Siegel – College of Science, Technology, Engineering, and Mathematics: Department of Biology

**Student Organizations** This year we had 197 (FY20) registered student organizations which included 21 brand new organizations.

**Student Activities Council** Student Activities Council (SAC) is the largest, most diverse student programming organization on campus. SAC plans and facilitates a variety of educational, social, cultural, and recreational activities for the campus community. This year they hosted 34 events and 9 of those events were co-sponsorships with other student organizations or departments. The cost per student was the lowest it has been in six years.



**Events Services** The Campus Life and Events Service Office coordinates most reservations across the main campus. With the loss of R25 scheduling software, numbers were manually calculated for FY20 from the completed paper reservation forms. The Assistant Director did not complete paper reservation forms. These numbers also do not account for all the



reservations in Outlook. The total reservation forms submitted were 1,496. Of these forms, 991 (66%) were for single occurrence events. 505 (34%) were for events that occurred 2 or more times (i.e. chapter meetings, First Step). Of the 1496 request forms 789 were for spaces outside the University Center and 707 were for UC spaces.

**ID Services** Redhawk ID production was an area that experienced significant changes during the year as a direct result of Covid-19. During the spring semester, services were transitioned from an in person identification card production to an online, remote process. The number of IDs produced did not change, however, the change in service and delivery method provided an enhanced process for our students.

**Fiscal Summary**

	<b>FY 2020</b>	<b>FY 2019</b>	<b>FY 2018</b>
<b>Revenue</b>			
ID Cards			
507060 Nontaxable Sales	\$14,935	\$19,931	\$24,196
507900 Intra Campus Charges	\$972	\$585	\$600
521100 Foundation Support reimb nursing badges			
<b>Total ID Cards</b>	<b>\$15,907</b>	<b>\$20,516</b>	<b>\$24,796</b>
University Transfers			
831000 GA waiver	\$8,686	\$11,630	\$31,851
831000 xfer to fund lump sum merit		\$6,458	
831000 unused proj \$ UC Dish Washing Rm		\$7,725	
831000 unused proj \$ Chartwells Ofc Floor		\$3,960	
<b>Total University Transfers</b>	<b>\$8,686</b>	<b>\$29,772</b>	<b>\$31,851</b>
Univ Ctr Info Desk Revolving			
507050 Taxable Sales			\$7
507060 Nontaxable Sales	\$33	\$49	\$118
<b>Total Univ Ctr Info Desk</b>	<b>\$33</b>	<b>\$49</b>	<b>\$125</b>
University Center			
506000 Coin Op Sales Taxable	\$77	\$135	\$166
507020 Fees (Bond Fee Income)	\$257,537	\$267,000	\$267,000
507080 Other Rentals (Bank)	\$22,500	\$21,500	\$20,500
507090 Taxable Rental Income (Room rental)	\$1,833	\$5,092	\$5,995
507100 Nontaxable Facilities (Room rental)	\$0	\$0	\$0
507110 Food Service (Chartwells Commission)	\$64,138	\$178,845	\$193,293
507180 Nontaxable Service Nonacademic	\$348		
507220 Interest Income	\$3,107	\$2,181	\$3,493
507900 Int Campus Chgs (ResLife Commissn)	\$60,000	\$60,000	\$60,000
507900 Intra Campus Charges (Camps)	\$100	\$243	\$1,143
507900 SE Serves Work	\$89	\$252	\$283
831000 Nonmandatory Transfers	\$285,752	\$315,752	\$438,498
Rent - University	\$225,000	\$255,000	\$273,900
Rent - Bookstore	\$60,752	\$60,752	\$60,752
CampusLife Supprt-ResLife/RecSports			\$103,846
<b>Total Univ Ctr Campus Activities</b>	<b>\$695,481</b>	<b>\$851,000</b>	<b>\$990,372</b>
<b>Total Revenue</b>	<b>\$720,107</b>	<b>\$901,337</b>	<b>\$1,047,143</b>
<b>Expenses</b>			
Univ Ctr Support Services			
620000 Faculty Staff Labor	\$47,472	\$46,370	\$45,164
701000 Operating Expenditures		\$0	\$0
<b>Total Univ Ctr Support Services</b>	<b>\$47,472</b>	<b>\$46,370</b>	<b>\$45,164</b>
ID Cards			
701000 Operating Expenditures	\$3,845	\$3,435	\$5,901
719060 Bad Debts Expense	\$320	\$660	\$830

Total ID Cards		\$4,165	\$4,095	\$6,731
University Transfers				
870000	xfer mandatory hiring delays	\$10,461		\$24,993
870000	UC 3 4 floor corridor carpet paint			\$23,000
870000	UC Rm 332 Dish Washing Floor capbaf			\$39,000
870000	UC Chartwells Ofc Floor replacement		\$5,224	\$26,817
870000	UC Prog Lounge Moveable Wall	\$50,955		
870000	Campus Network Upgrade capbaf	\$86,000		
Total University Transfers		\$147,416	\$5,224	\$113,810
Univ Ctr General Maintenance				
701000	Operating Expenditures	\$35,755	\$33,416	\$37,099
790000	Capital Expenditures			
Total Univ Ctr General		\$35,755	\$33,416	\$37,099
Univ Ctr Custodial Services				
620000	Faculty Staff Labor	\$83,217	\$85,312	\$101,939
701000	Operating Expenditures	\$15,897	\$26,954	\$24,350
701400	Staff/Dependent Fee Waiver			\$359
Total Univ Ctr Custodial Services		\$99,115	\$112,267	\$126,648
Univ Ctr Kitchen Maintenance				
701000	Operating Expenditures	\$75,727	\$74,568	\$77,758
780000	Equipment	\$28,681		
Total Univ Ctr Kitchen		\$104,408	\$74,568	\$77,758
Univ Ctr Furniture Equip				
701000	Operating Expenditures	\$30,109	\$22,044	\$32,640
780000	Equipment	\$0	\$7,494	\$13,406
Total Univ Ctr Furniture Equip		\$30,109	\$29,537	\$46,045
Univ Ctr Info Desk Revolving				
701000	Operating Expenditures		\$0	\$298
Univ Ctr Information Desk				
610000	Student Labor			
701000	Operating Expenditures	\$33	\$292	\$269
Total Univ Ctr Information Desk		\$33	\$292	\$269
University Center				
610000	Student Labor	\$72,235	\$71,590	\$67,063
620000	Faculty Staff Labor	\$258,949	\$259,086	\$244,309
701000	Operating Expenditures	\$14,044	\$11,107	\$15,570
	Staff/Dependent Fee Waiver	\$3,424	\$1,245	
	GA Fees (funded by Graduate Office)		\$3,030	\$14,651
780000	Equipment		-\$584	\$584
850000	Mand Transf (bond util conversion)	\$25,000	\$25,000	\$25,000
870000	Greek Life			\$66,000

870000	Transfer Expense-VP for Aux Support	\$8,160	\$8,755	\$1,500
870000	Nonmand Transf (Renovtn Repay)	\$74,500	\$39,000	\$39,000
870000	Nonmand Transf (Def Maint)	\$4,500	\$40,000	\$40,000
Total Univ Ctr Campus Activities		\$460,813	\$458,229	\$513,677
Campus Life				
610000	Student Labor			
620000	Faculty Staff Labor	\$26,602	\$51,988	\$84,613
701000	Operating Expenditures	\$940	\$1,241	\$3,552
Total Campus Life		\$27,543	\$53,229	\$88,165
Non Budgeted Entries				
620000	Faculty Staff Labor	\$1,886	-\$5,550	-\$1,146
<b>Total Expenditures</b>		<b>\$958,714</b>	<b>\$811,677</b>	<b>\$1,054,518</b>
<b>Net Revenue/Expense</b>		<b>-\$238,607</b>	<b>\$89,660</b>	<b>-\$7,374</b>

#### Fund Balance

	<i>Revenue</i>	<i>Expenses</i>	<i>Net</i>	<i>Fund Balance</i>
FY20	\$720,018	\$958,625	(\$238,607)	\$48,851
FY19	\$882,943	\$793,283	\$89,660	\$287,458
FY18	\$1,046,860	\$1,054,234	(\$7,374)	\$197,798



## Chartwells Educational Dining Services

Chartwells is re-inventing the on-campus dining experience.

We challenge the norm and set new standards by investing in high-tech,

food-infused social spaces that bring people together to promote meaningful relationships and interactions. We are food-forward difference makers, bound together by a desire to feed hungry minds and prepare students for success.



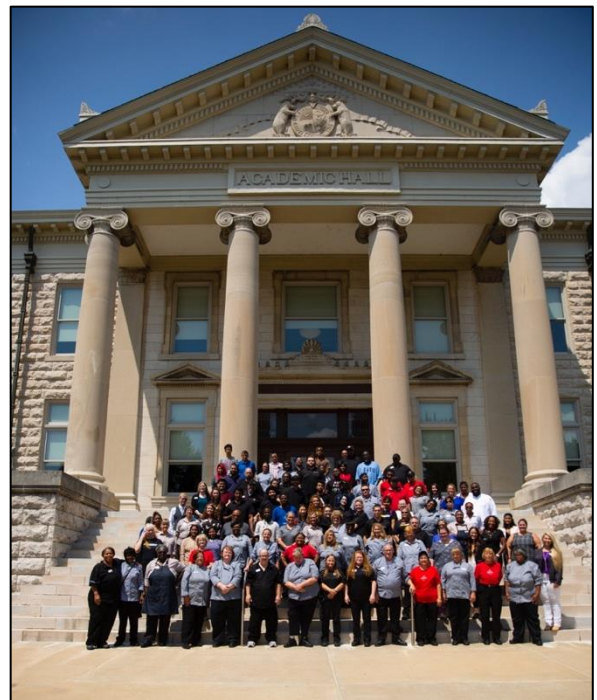
For over 20 years, Chartwells Higher Education Dining Services has been the on-campus dining partner for Southeast Missouri State University. In FY2019, the partnership was extended through 2031. Currently, 6.5 million dollars is the total capital investment committed to Southeast per current contract. Chartwells is proud to contribute 210 jobs for the local community.

### **Mission Statement:**

As a division of Compass Group, we are committed to consistently delivering superior service in the most efficient way, for the shared benefit of our customers, shareholders and associates.

### **Our Vision:**

To be a world-class provider of contract foodservice and support services, renowned for our great people, our great service and our great results.



## **Southeast Students and Alumni Building Their Future with Chartwells**

Chartwells is proud to employ over 60 active Southeast students within our operations, as well as, host several Southeast student interns. Included in Southeast Missouri State University's post-graduate dietetic internship program, Chartwells hosts a minimum of two dietetic interns a year. In addition, Chartwells hosts a paid marketing intern every semester. While learning their specific daily duties of their roles, our interns are connected with other Chartwells interns and mentors throughout the country as they participate in weekly webinars with a dedicated student success director. Furthermore, we continue to give our team the tools they need to succeed. In February, a certified instructor guided our staff in a two-day seminar concerning best practices,

opportunities for improvement and overall growth within our locations.

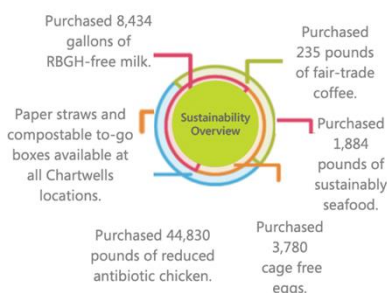
Every day, alumni of Southeast prove their Will To Do within multiple divisions of the Chartwells business. On the Southeast campus, several key roles are led by Southeast graduates. Specifically, Divisional President, Nadeem Zafar, Resident District Manager, Matthew Ludwig, Director of Marketing and Student Engagement, Alicia Ticer, Senior Director of Retail, Rukhsar Arzoo and Dietary Manager, Kierstin Brown, to name a few.

## Customized Approach

We customize every element of the dining experience to be unique for our Southeast community. Utilizing multiple platforms, such as the Happy or Not devices at Towers Café and St. Vincent’s Commons or the Voice to Vision Guest Satisfaction Survey, we help to navigate and create an extraordinary dining experience within our dining halls. We take the feedback from our guests very seriously and in turn, develop an action plan to meet our needs. As a premier full-service caterer within the Cape Girardeau community, this year we unveiled the Carved+Crafted catering menus. Carved+Crafted focuses on building menus with locally sourced ingredients and seasonal trends. Yet, keeping the classic dishes and favorites available for our guests. Most importantly, as COVID-19 began, our catering team partnered with Southeast to serve and deliver meals and snacks to quarantined students on campus.

## Cutting Edge Culinary

Campus Senior Executive Chef Kevin Yarbrough leads the culinary team for Chartwells at Southeast Missouri State University. Trained by French Master Chef Patrice Boely at the prestigious Chickasaw Country Club in Memphis, Tn., Kevin has a talent for southern flare with a modern twist. Yarbrough leads the team in finding seasonal trends, locally sourced ingredients and new innovative recipes to the Southeast campus. Most recently, Kevin has worked with the team to explore and develop greater options and variety for vegetarian and vegan students on campus. In the Fall of 2019, Yarbrough utilized his Memphis expertise to build menus for Smoked, a new BBQ concept in Redhawks Market. Smoked has been a hit with favorites like smoked brisket, creamy Mac&Cheese and loaded baked potato salad.



## Sustaining our Future

Our sustainability philosophy aligns with the goals of Generation Z. In FY20, we initialized compostable to-go boxes and straws available upon request within our dining locations. Weekly, Towers Café gives vegetable and fruit trimmings to the University Greenhouse for composting.

## **Building Our Community**

Chartwells recognizes the integral role we play with Southeast Missouri State University and the Cape Girardeau community. Once a year Chartwells provides \$500 to the hospitality management department as an investment in the betterment of the program. This year, Chartwells also helped facilitate Quantella Noto and the hospitality management program in creating Southeast's first hot sauce, known as Hawk Sauce. In addition, at least once a month Chartwells surprises and delights students, faculty or staff with "Love Chartwells" events. For example, handing out free cookies to students within the library. Equally important, during Carpe Diem, we open the kitchen doors to international students and invite them to create dishes from their respective countries for the Southeast community to share. It follows that when COVID-19 dynamically changed our business, we immediately jumped into action to understand how we could help our Southeast and local community. Chartwells bought food at cost to help give to Southeast faculty, staff and students in need during Southeast's drive-by food donation events. As operations closed, we donated individually packaged snack items and bottled beverages to the Salvation Army.

## **Educating Outside the Classroom**

In addition to being committed to providing students exceptional meals and service, Chartwells has created a program unique to developing kitchen literacy on campus. Teaching Kitchens have been established as a way to promote confidence in the kitchen, answer common questions and give guests a new recipe in their repertoire. As a free teaching class for students, the course became popular with student organizations and floor activities. Each class is led a campus Chef and the Dietary Manager. As COVID-19 concerns rose, Teaching Kitchens continued to be offered virtually.

## **Earning Recognition**

In February of 2020, the Chartwells Starbucks location was awarded the winner of the Fall Customer Connection Award for the Hein District. Starbucks remains one of the most popular locations for students on campus. It only takes one visit to meet the team behind the line and understand why students seek out this trendy spot to stay for hours at a time.



## Usage Summary

- FY20 board total meals served on campus 677,861. Total meals, including catering, guest, flex, cash, Redbucks, and Flex was 969,531.
- FY19 board total meals served on campus 923,672, Total meals, including catering, guest, flex, cash, Redbucks, and flex was 1,380,793.
- FY18 board total meals served on campus, 1,033,463. Total meals, including catering, guest, flex, cash, Redbucks, and flex was 1,524,618.
- FY17 total board meals served on campus, 987,413. Total meals, including catering, guest, flex, cash, Redbucks, and flex was 1,505,108.

## Contract Details

	FY18	FY19	FY20
Meal Plan Guarantee	2,900	2,900	2,900
Meal Days	226	226	226
Commission Guarantee	\$234,000	\$234,000	\$234,000
Actual Meal Plan Average	2,936	2900	2610
Value Exchange	Breakfast \$4.77 Lunch \$7.29 Dinner/Brunch \$7.29	Breakfast \$4.87 Lunch \$7.44 Dinner/Brunch \$7.44	Breakfast \$4.98 Lunch \$7.60 Dinner/Brunch \$7.60
Catering Allowance	\$35,000 per year	\$35,000 per year	\$35,000
Rate increase	3.5%	2%	2.2%

## Dining Venues

- Towers Café @ Towers Complex, cafeteria style
- Rowdy's @ Towers Complex, food court style
- Kaldi's @ Scully, coffee venue
- St. Vincent's Common @ Dobbins Center, food court style
- Redhawks Market @ University Center, food court style
- Panda Express @ University Center
- Starbucks @ University Center, full service Starbucks
- Houck's Place @ Merick Hall, food court style
- Subway @ Scully, full service Subway

## Greek Life

The Greek Life system at Southeast is comprised of many chapters, which are part of one of three governing councils. The membership of these chapters range from 4 members to over 120 members and provide for a Greek community of well over 1,500 members.



## Mission

We endeavor to provide an outside the classroom experience that will assist in fostering the growth of student leaders to have a positive impact on the campus, local, and global community.

## Vision

The vision of the Greek Life Office at Southeast Missouri State University is to improve the quality of student life by enabling members of the Greek community through advising, educational programs, and collaborating with stakeholders on and off campus. We understand that our Greek organizations serve as diverse communities and that diversity strengthens the overall Greek community.



## Student Participation in Greek Life

As an overall percentage of students, Southeast fraternities and sororities made up approximately 18% of the student body for fiscal year 2019.

From fall 2009 through fall 2019 the Greek system grew by 38%

Fall 2019 membership, 1,525  
Fall 2018 membership, 1,637  
Fall 2017 membership, 1,529  
Fall 2016 membership, 1,336  
Fall 2015 membership, 1,299  
Fall 2014 membership, 1,312  
Fall 2013 membership, 1,072  
Fall 2012 membership, 1,095  
Fall 2011 membership, 1,056  
Fall 2010 membership, 1,005  
Fall 2009 membership, 946





## Fall and Spring Chapter Numbers

Chapter numbers are based on the University fourth week census. The numbers reported below reflect the chapter's end of the semester roster, as reported to the University by the chapter.

<i>Chapter</i>	<i>Fall 2019</i>	<i>Spring 2020</i>
Alpha Chi Omega	110	95
Alpha Delta Pi	127	116
Alpha Phi	114	98
Alpha Phi Alpha	4	4
Alpha Xi Delta	118	100
Delta Chi	55	51
Delta Delta Delta	126	114
Delta Sigma Theta	5	4
Gamma Phi Beta	114	99
Iota Phi Theta	N/A	N/A
Lambda Chi Alpha	71	68
Omega Psi Phi	6	6
Phi Beta Sigma	6	5
Phi Delta Theta	76	61
Pi Kappa Alpha	89	77
Sigma Chi	90	87
Sigma Gamma Rho	5	4
Sigma Nu	106	110



Sigma Phi Epsilon	79	79
Sigma Sigma Sigma	106	96
Sigma Tau Gamma	18	11
Tau Kappa Epsilon	38	34
Theta Xi	26	27
Zeta Phi Beta	7	5
<b>Total</b>	<b>1,525</b>	<b>1,378</b>

ΛΧΑ

We believe in Lambda Chi Alpha, and its traditions, principles, and ideals. The crescent is our symbol—pure, high, ever growing; and the cross is our guide—denoting service, sacrifice, and even suffering and humiliation before the world, bravely endured if need be, in following that ideal.


May we have faith in Lambda Chi Alpha and passion for its welfare. May we have hope for the future of Lambda Chi Alpha and strength to fight for its teachings. May we have pure hearts, that we may approach the ideal of perfectly brotherly love.

semolambdachi.com

Designed by Brett Berrong

## The 30th Anniversary of Lambda Chi Alpha Delta-Phi Zeta October 26th, 2019

1989-2019



### Event Sponsors

Joe & Amy Gibson

Jason LeGrand & Dr. Eric Burkholder

Robert & Laurie Zeitler

Anonymous in honor of  
Neal E. Boyd  
Doug Gross  
Tad Satterfield  
Scott Wood  
Trevor Wood

### High Zeta

High Alpha - Ryan Wiggers  
High Beta - Kyle Spalinger  
High Theta - Nathan Higgins  
High Gamma - Drake Helton  
High Tau - Jake Wesley  
High Sigma - Ty Neldon

High Delta - Jackson Pailley  
High Iota - Justin Strauss  
High Epsilon - Taylor Moore  
High Phi - Robert Robinson  
High Kappa - Connor Anderson  
High Rho - Blake Stroh

### Alumni Boards

**Alumni Association Board**

President - Rob Zeitler  
Vice President - Steve Backer  
Treasurer - Parker Butler  
Secretary - Abhishek Yadav  
Member at Large - James Wella  
Member at Large - Steve Arosteguy  
Webmaster - Michael Covert  
High Phi - Dr. Charles McAllister  
High Rho - Blake Stroh  
High Alpha - Ryan Wiggers

**Alumni Advisory Board**

Dr. Charles McAllister  
Evan Siers  
Parker Butler  
Benny Darris  
Dr. Greg Felock

### Schedule

*Program Emceed by Scott Giles & Parker Butler*

Reception - 5:30pm

Program Begins - 6:30pm

Introductions by Scott Giles and Parker Butler

Remarks by Scott Crowell

Invocation by Steve Backer

Dinner

Remarks by Ryan Wiggers

Scholarships & Philanthropy by Jason LeGrand

2019 Hall of Fame Awards

Dr. Andrew Tag, Assistant Professor, Texas A&M  
Introduced by Scott Crowell

Ron Bull, CEO of Geeding Construction  
Introduced by Tim Schoolfield

Dr. Matthew McKnight, Chief Archeologist at  
Maryland Historical Trust  
Introduced by Ed Magee

Derrick Feldmann, Speaker & Author  
Introduced by Patrick Kohring

## **Five Star Program**

The Five Star Chapter Program, which includes the past Greek Accreditation program, focuses on the actions chapters take and the structure they have in place to support their organization. The Five Star Chapter Program provides organizations the opportunity to be recognized with “star standing” in five key areas of chapter operations 1) Academic Success, 2) Chapter Management, 3) Membership Development and Education, 4) Civic and Community Engagement, and 5) Harm Reduction/Risk Management.

### Evaluation

The submitted materials are reviewed by a panel of faculty and professional staff at Southeast Missouri State University or invited professionals with experience in Greek Life and/or who work with student organizations at a college or university. Each submission is reviewed by three panelists and the average of the three scores will be the score for each item/section. Reviewers are asked to provide written feedback in relation to their score. Any dispute between panelists will be resolved by the Office of Greek Life.

Star standing in each of the areas is based upon a set of pertinent criteria. The star standings will be determined by the following point value:

- Five Star Chapters - Chapters attaining 90% or more of possible points
- Four Star Chapters – Chapters attaining 70% - 89% of possible points
- Three Star Chapters – Chapters attaining 55% - 69% of possible points
- Two Star Chapters – Chapters attaining 41% - 54% of possible points
- One Star Chapters – Chapters attaining 26% – 40% of possible points
- Chapter Non-Conforming - Chapters scoring less than 25% of the eligible points or failing to submit any information for the Five Star Chapter Program

## **5 Star Award (FY19)**

The following 5 Star Award program awards were presented in FY18. Additional detail on each award and star ranking for each chapter can be found on the Greek life website ([semo.edu/greeklife](http://semo.edu/greeklife))

- University Five Star Sorority of the Year; Alpha Delta Pi
- University Five Star Fraternity of the Year; Sigma nu
- Sorority Harm Reduction Award; Delta Delta Delta
  - Honorable Mention: Alpha Chi Omega, Gamma Phi Beta, Alpha Delta Pi
- Fraternity Harm Reduction Award; Sigma Nu
  - Honorable Mention: Sigma Phi Epsilon, Phi Delta Theta
- Sorority Chapter Management Award; Delta Delta Delta
  - Honorable Mention: Alpha Delta Pi
- Fraternity Chapter Management Award; Sigma Nu
  - Honorable Mention: Phi Delta Theta
- Sorority Membership Development & Education Award; Sigma Sigma Sigma



- Honorable Mention: Delta Delta Delta, Alpha Delta Pi, Alpha Xi Delta
- Fraternity Membership Development & Education Award; Sigma Nu
  - Honorable Mention: theta Xi, Phi Delta Theta,
- Sorority Academic Achievement Award; Alpha Delta Pi
  - Honorable Mention: Alpha Xi Delta
- Fraternity Academic Achievement Award; Sigma Nu
  - Honorable Mention: Sigma Phi Epsilon
- Sorority Civic and Campus Engagement Award; Sigma Sigma Sigma
  - Honorable Mention: Alpha Delta Pi, Delta Delta Delta
- Fraternity Civic and Campus Engagement Award; Phi Delta Theta
  - Honorable Mention: Sigma Nu

A listing of past chapter of the year award winners can be found in *Appendix D*.

### **Greek Week**

Each spring the Greek community comes together for a mix of competition, celebration, and philanthropy. Greek Week is an opportunity to shed the stereotype that some have of Greek Life and showcase the work they do to impact the community.

Greek Week was to be held on April 25 through May 3. Because of the University transition to remote learning and the COVID-19 pandemic, the events for Greek Week were cancelled, including the Greek Community’s partnership with the Southeast Missouri Special Olympics and other events like Walk-A-Mile in her shoes, and other competitions. The theme for Greek Week was “That’s 20’s Greek Week show, aka sitcoms.

### **Greek Week & Greek Awards**

*Spring 2020*

<b>Overall Greek Week</b>	
<i>1<sup>st</sup> Place</i>	N/A
<i>2<sup>nd</sup> Place</i>	N/A
<i>3<sup>rd</sup> Place</i>	N/A
<b>Greek Sing</b>	
<i>1<sup>st</sup> Place</i>	N/A
<i>2<sup>nd</sup> Place</i>	N/A
<i>3<sup>rd</sup> Place</i>	N/A
<i>Greek Week Director</i>	Conner Wakeland, Pi Kappa Alpha

## Greek Awards (chosen by Order of Omega)

<i>President of the Year:</i>	Sabina Tapscott, Alpha Delta Pi
<i>President of the Year:</i>	Justin Jacobs, Sigma Nu
<i>Professor of the Year:</i>	Dr. John Kraemer
<i>Man of the Year:</i>	Thomas Oleson, Sigma Phi Epsilon
<i>Woman of the Year:</i>	Samantha Wakltsch, Delta Delta Delta
<i>New Member of the Year</i>	Heather Hoffman, Sigma Sigma Sigma
<i>New Member of the Year</i>	Elliot Siekmann, Sigma Nu
<i>Sophomore of the Year:</i>	Emily Braun, Alpha Chi Omega
<i>Sophomore of the Year:</i>	Daniel Frew, Sigma Nu
<i>Junior of the Year:</i>	Kyra Minder, Delta Delta Delta
<i>Junior of the Year:</i>	Blake Stroh, Lambda Chi Alpha
<i>Community Service Award:</i>	<i>Grace Larson, Gamma Phi Beta</i>
<i>Community Service Award:</i>	Aaron Crowell, Sigma Nu
<i>Unsung Hero:</i>	Alexis Harris, Delta Delta Delta
<i>Unsung Hero:</i>	Nathan Partelow, Lambda Chi Alpha
<i>Sorority Advisor of the Year:</i>	Lori Scheeter, Gamma Phi Beta
<i>Fraternity Advisor of the Year:</i>	Nate Willis, Sigma Chi
<i>Sorority Greek Heart</i>	Kate Appleman, Alpha Delta Pi
<i>Fraternity Greek Heart</i>	Logan Phillips, Sigma Nu

## Fiscal Summary

<b>Expenses</b>	<b>FY 2020</b>	<b>FY 2019</b>	<b>FY 2018</b>
610000 Student Labor	\$2,805	\$9,230	\$10,113
620000 Faculty Staff Labor	\$17,372	\$17,194	\$22,938
701000 Operating Expenditures	\$26,634	\$35,140	\$25,129
701460 Graduate Asst Fees Fee Waiver	\$11,778	\$18,162	\$13,330
704200 Out Of State Travel			\$80
704450 Ground Transportation	\$437	\$248	\$430
704500 Lodging	\$861	\$1,176	\$1,286
704550 Travel Per Diem Meals	\$488	\$380	\$66
704600 Business Meals	\$107		\$62
705700 Facilities Mgmt Services	\$200	\$450	\$1,274
706300 Photography Microfilming Svc		\$125	
706350 Other Professional Services	\$1,587	\$5	
706600 Contract Food Services		\$337	
707150 Postage and Related Expenses	\$3	\$237	\$69
707200 Printing and Binding	\$34	\$1,226	\$201
707250 Telephone and Line Charges	\$257	\$270	\$2,016
707400 Computer Hardware Software Op Exp	\$1,808		
707410 Software Subscriptions	\$18		
707450 Office Supplies	\$50	\$1,247	\$508

707600	Oper Maint Suppl Mech Equip		\$111		
708250	Educational Supplies	\$55	\$32		
708350	Banquets Catering	\$1,171	\$1,318	\$1,077	
708500	Technical and Specialized Suppl	\$384			
708550	Prizes and Awards	\$2,135	\$3,317	\$1,070	
708580	Dues and Memberships	\$740	\$665	\$830	
708590	Publications and Subscriptions			\$107	
708680	Household Equip Under 1000	\$293			
708800	Institutional Clothing	\$193			
708900	Conferences Meetings Registration	\$1,719	\$4,603	\$1,670	
710150	Room Rentals			\$1,052	
710200	Vehicle Rentals	\$1,316	\$1,057		
710250	Specialized Equipment Rentals	\$1,000			
710450	Other Rentals		\$174		
	<b>Total</b>		<b>\$46,812</b>	<b>\$61,563</b>	<b>\$58,180</b>

## Housing

Greek organizations currently have three organized housing options:

1. Greek Area: Built in the mid-1960's, there are five traditional dormitory buildings that are home to six sororities and five fraternities. Some chapters have been in the same building since the area opened in the 1960's. Others have moved in and out of the area over the past decades.

### F-building

- East: Delta Delta Delta, 37 beds capacity (with RA: 38)
- West: Alpha Chi Omega, 41 beds capacity (with RA: 42)

### G-building

- East: Alpha Delta Pi, 37 beds capacity (with RA: 38)
- West: Sigma Sigma Sigma, 38 beds capacity (with RA 39)

### H-Building

- East: Lambda Chi Alpha, 33 beds capacity (with RA: 34)
- West: STEM, 35 beds capacity (with RA: 36)

### J Building

- East: Gamma Phi Beta, 41 beds capacity (with RA: 42)
- West: Alpha Xi Delta, 37 beds capacity (with RA: 38)

### K Building

- East: Alpha Phi, 35 beds capacity (with RA: 36)
- 1<sup>st</sup> Floor West: Delta Chi, 11 beds capacity
- 2<sup>nd</sup> Floor West: Tau Kappa Epsilon, 8 beds capacity (with RA: 9)
- 3<sup>rd</sup> Floor West: Phi Delta Theta, 14 beds capacity

2. Off Campus Houses: There are an unknown number of houses that are occupied by members of Greek chapters. Off campus houses are privately owned rental houses which rent to members of the same chapter.
3. Greek Village/Court: Opening in fall 2016 provides four new houses for approximately 110 Greek students. These houses are limited to sophomore and above students. These houses will be managed via a lease agreement between the housing corporation and the University.

### Chapter Grades (all chapter term gpa)

Chapter	Fall 2019	Spring 2020	Credit/no Credit Option	
<i>Alpha Chi Omega</i>	3.423	3.633	For the spring 2020 semester students were given a “credit/no credit” option. This option was available for students who believed their final grade(s) in a full semester or second eight-week session course(s) of the spring 2020 term were negatively impacted by the changes instituted during the spring 2020 term due to the COVID-19 pandemic.	
<i>Alpha Delta Pi</i>	3.499	3.699		
<i>Alpha Phi</i>	3.161	3.445		
<i>Alpha Phi Alpha</i>	1.938	3.214		
<i>Alpha Xi Delta</i>	3.477	3.694		
<i>Delta Chi</i>	2.662	3.232		
<i>Delta Delta Delta</i>	3.476	3.694		
<i>Delta Sigma Theta</i>	2.662	3.232		
<i>Gamma Phi Beta</i>	3.460	3.672		
<i>Lambda Chi Alpha</i>	3.000	3.221		
<i>Omega Psi Phi</i>	2.471	2.883		
<i>Phi Beta Sigma</i>	2.953	2.761		
<i>Phi Delta Theta</i>	3.150	3.420		
<i>Pi Kappa Alpha</i>	2.724	3.087		
<i>Sigma Chi</i>	2.978	3.345		
<i>Sigma Gamma Rho</i>	2.902	3.333		For students who opted for the “no-credit” option, in place of a failing grade, 3.423 their overall grade point average was not impacted by selecting “no-credit.” The use of “no-credit” in place of a D or F had a positive overall impact on chapter grade point averages.
<i>Sigma Nu</i>	3.144	3.426		
<i>Sigma Phi Epsilon</i>	3.082	3.320		
<i>Sigma Sigma Sigma</i>	3.330	3.026		
<i>Sigma Tau Gamma</i>	2.696	3.026		
<i>Tau Kappa Epsilon</i>	2.617	2.977		
<i>Theta Xi</i>	3.159	3.216		
<i>Zeta Phi Beta</i>	2.449	2.781		

### Governing Councils

The Greek Life system has three Governing Councils. The Interfraternity Council, National Pan-Hellenic Council, and the Panhellenic Council. A listing of the Presidents of these three Councils can be found in Appendix C.



## Office of Military and Veterans Services

Opened in 2012, the Office of Military and Veterans Services (OMVS) provides resources, information, networking opportunities, and support to Veterans, military personnel, and their dependents. The OMVS also assists in recruitment, enrollment, and retention of military-affiliated student population.



### Mission

The Office of Military and Veterans Services (OMVS) provides targeted support and services to all military and Veteran students, as well as their dependents, with the goal of having the students attain academic and personal success. The OMVS assists students with access and completion of student processes such as admissions, financial aid, billing, military education benefits, registration, referrals, and networking opportunities. In addition, the OMVS advocates for our military-affiliated population and hosts events, workshops, and training for staff, faculty, and students. This aids in assisting the Southeast community gain a better understanding of, and provide better services to, this unique population.

### Services offered by the OMVS:

- Education benefits counseling and processing (specific to military affiliated population)
  - Federal and State Tuition Assistance
  - VA Educational Assistance
  - Scholarships and Free Application for Federal Student Aid (FAFSA)
- Personalized assistance
  - Application processes
  - Military Transcript Evaluations
  - Transition Assistance
  - Housing referrals (on and off campus)
  - Networking with the community and fellow Veterans
  - Counseling, disability services, medical/health, housing, and employment referrals
- Endowed Scholarship Administration (military-affiliated population)
- Support the Student Veterans Organization (SVO)
  - Provide a dedicated space and office for the SVO; sponsors SVO events and professional development



### Student Interactions

Fiscal Year	20 (19-20)	19 (18-19)	18 (17-18)
VA educational benefits processed	663	723	735
Tuition Assistance processed	185	189	182

## Usage Summary

- Military Student Population
  - Self-Reported Military and Veterans: 353 (FY20)
  - Spouses and Dependents: 711 (FY20)
  - Veterans Awards Degrees: 70 (FY20)



## Programs and Accomplishments (FY20)

- Awarded Military-Friendly Silver Designation, Military Spouse Friendly, and Best for Vets College
- Sponsored seven VA Work-Study positions
- Secured Graduate Assistant position
- Continued membership and participation in organizations (i.e., Missouri Multi-State Collaborative on Military Credit Steering Committee, MO Dept. of Higher Education, MO Dept. of Mental Health workgroup, Joining Community Forces, NASPA, Veterans Assistance Council, Missouri Council on Military Credit, Military) in order to best serve our student Veteran population
- Participated in VA Townhall Meeting, Out of the Darkness Suicide Prevention, Department of Veterans Affairs School Certifying Official training, Veterans in Higher Education Collaborative, and Eastern Missouri District learning Summit
- Executed several training events: Military & Veterans Workshop; Tuition Assistance Workshop; Military-Affiliated Student Training (MAST).
- Continued to assist students and the Registrar's Office with in-depth military transcript evaluation and credit articulation
- Served on Prior Learning Assessment Working Committee to advance policy and procedures for experiential and non-traditional credit
- Executed several engagement activities, to include breakfasts, Homecoming festivities, voting encouragement party, Freedom 5K, Patriot Day Ceremony, midterm snack breaks, lunches, and support the Student Veterans Organization
- Assisted local agencies to provide shelter and resources for homeless Veterans



- Assisted student Veterans and their families with referrals and obtaining gainful employment through external agencies (Social Security Administration, MO Career Center, Snap-On)

### **Fiscal Summary**

<i>Student Labor</i>	\$603	\$4,898	\$1,481
<i>Faculty Staff Labor</i>	\$83,064	\$81,345	\$108,064
<i>Total Operating Expenditures</i>	\$3,087	\$12,933	\$7,483
Graduate Asst Fees Fee Waiver		\$3,030	
In State Travel			\$1,047
Out of State Travel			\$90
Airfare	\$285		
Ground Transportation		\$82	
Business Meals	\$33		
Other Operating Services	\$25	\$8	
Postage and Related Expenses	\$15		
Printing and Binding	\$355	\$8	\$401
Telephone and Line Charges	\$1,094	\$1,061	\$1,605
Advertising		\$3	
Promotional Items		\$5,300	
Office Supplies	\$517	\$1,702	\$1,037
Computer Supplies	\$59		
Custodial Supplies		\$19	
Food Service Supplies	\$30		
Banquets Catering	\$404	\$1,191	\$3,003
Institutional Clothing		\$422	
Dues and Memberships	\$100		
Furniture Purch Under 5000	\$170		
Conferences Meetings Registration			\$300
Specialized Equipment Rentals		\$108	





## Recreation Services

Recreation Services provides a variety of services and programs for students and recreation services members. Programs include organized fitness and wellness classes, personal training, intramural programs, club sports, and community events.



## Mission

Recreation Services at Southeast Missouri State University is dedicated to providing quality facilities, innovative programs and services that meet the diverse recreational needs of the University community. We strive to enhance the quality of life, increase socialization and encourage lifelong wellness.



Rec Services Staff

## Facilities

- Student Recreation Center - Multiple basketball/volleyball courts, cardio equipment, weights, racquetball courts, indoor track, climbing wall, fitness/dance studios and administrative offices
- Student Aquatic Center; lap pool, leisure pool, hot tub, zip line, and aquatic climbing wall
- Intramural Fields; 2 multipurpose artificial turf softball/soccer fields, 2 sand volleyball courts, 1 large multipurpose natural grass field (large enough for 2 flag football fields, or one large soccer pitch); 2 tennis courts
- Challenge Course; low and high ropes challenge course
- Parker Hall Dasher board Court; hosts a variety of indoor sports such as soccer, hockey, and intramural contest
- eSports arena – Towers complex; 12 dedicated gaming computers, 2 streaming/casting computers, 5 gaming consoles for open and competitive play





eSports Arena - the eSports Arena opened in the Fall of 2019

**Club Sports**

Club Sports / eSports

For FY20 there were 20 club sports, serving approximately 700 students

Archery	Baseball	Bass Anglers	Disc Golf
Equestrian	Fencing	Floor Hockey	Lacrosse
Rock Climbing	Rugby	Running	Suba
Soccer (men)	Soccer (women)	Swimming	Tennis
Ultimate Frisbee	Volleyball (co-rec)	Volleyball (women)	eSports



Aerial Yoga / Group Fitness Instructor



Facility Staff



Branding in main weight room



Dumbbell area in main weight room



Greek Men's Intramural Champions Fall 2018 – Spring 2019 (Leaderboard in background)

**Intramural Participation Fall 2019 – Spring 2020**

	<b>Participants</b>	<b>%</b>	<b>Unique Participants</b>	<b>%</b>	<b>Participations</b>	<b>%</b>
Southeast Missouri	3752	100	1157	100	4343	100
Male	2246	59.9	701	60.6	2916	67.14
Female	1506	40.1	456	39.4	1427	32.86
<b>Freshman</b>	1153	30.7	342	29.6	1316	30.3
Male	626	54.3	193	56.4	769	58.43
Female	527	45.7	149	43.6	547	41.57
<b>Sophomore</b>	979	26.1	272	23.5	1095	25.21
Male	509	52	149	54.8	634	57.9
Female	470	48	123	45.2	461	42.1
<b>Junior</b>	729	19.4	235	20.3	888	20.45
Male	471	64.6	143	60.9	682	76.8
Female	258	35.4	92	39.2	206	23.2
<b>Senior</b>	792	21.1	266	23	896	20.63
Male	571	72.1	189	71.1	715	79.8
Female	221	27.9	77	29	181	20.2
<b>Grad Student</b>	24	0.64	14	1.21	29	0.67
Male	16	66.7	9	64.3	26	89.66
Female	8	33.3	5	35.7	3	10.34
<b>Faculty/Staff</b>	7	0.19	4	0.35	3	0.07
Male	7	100	4	100	3	100
Female	0	0	0	0	0	0
<b>Spouse</b>	0	0	0	0	0	0
Male	0	0	0	0	0	0
Female	0	0	0	0	0	0
<b>Other</b>	68	1.81	45	3.89	116	2.67
Male	46	67.7	31	68.9	87	75
Female	22	32.4	14	31.1	29	25
<b>#</b>	<b>Teams</b>	<b>%</b>	<b>Games</b>	<b>%</b>	<b>Forfeits</b>	<b>Defaults</b>
Southeast Missouri	391	100	842	100	102	65

**Fitness and Wellness Programs for FY20**

- Group fitness class offerings including Pilates, Yoga, Aerial Yoga, Zumba, RedhawkPUMP, RedhawkSHRED, and more. We added virtual group fitness offerings from March 2020 – May 2020, via Facebook live and Zoom. Participation numbers do not include virtual participants.

- Personal training; student personal trainers working with a variety of clients throughout the semester who pay for these services
  - We usually have anywhere from 7 to 12 clients working with trainers during the school year
- Employees wellness screening (Fall 2019); hosts and helps coordinate employee wellness fair (325-375 employees participate)
- Peer Education; 13 Certified Peer Educators who are Southeast students that give interactive program presentations to various student groups as well as health/wellness tabling events held at different locations around campus
  - Alcohol Responsibility, Safe Sex Education, De-Stress Events, Ask/Listen/Refer (Suicide Prevention), Un-Masking the Inner You (Self Awareness)
  - Held over 20 presentations to a variety of dorm floors and students groups around campus
- Special Events (Fitness/Wellness emphasis) offered to students throughout the school year
  - Redhawk Warrior Night
  - Lunar Loop
  - Back to School Splash Bash
  - All Out Fitness Challenge/Show-Me PT (partnership with Show-Me Gold)
  - Battleship
  - Rock Wall Speed Climbing Challenge
  - All-Day 5K
  - Brandt Field Day Obstacle Course and PT Challenge (Partnership with Show-Me Gold)



Yoga meditative breathing

**Fitness/Wellness Participation Fall 2019 – Spring 2020**

	<b>Participants</b>	<b>%</b>	<b>Unique Participants</b>	<b>%</b>	<b>Participations</b>	<b>%</b>
Southeast Missouri	2861	100	534	100	2523	100
Male	261	9.12	52	9.74	232	9.2
Female	2600	90.9	482	90.3	2291	90.8
<b>Freshman</b>	666	23.3	152	28.5	585	23.19
Male	33	4.95	8	5.26	25	4.27
Female	633	95.1	144	94.7	560	95.73
<b>Sophomore</b>	351	12.3	92	17.2	314	12.45
Male	20	5.7	7	7.61	19	6.05
Female	331	94.3	85	92.4	295	93.95
<b>Junior</b>	253	8.84	79	14.8	207	8.2
Male	34	13.4	7	8.86	28	13.53
Female	219	86.6	72	91.1	179	86.47
<b>Senior</b>	301	10.5	68	12.7	240	9.51
Male	18	5.98	8	11.8	13	5.42
Female	283	94	60	88.2	227	94.58
<b>Grad Student</b>	115	4.02	9	1.69	96	3.8
Male	7	6.09	1	11.1	6	6.25
Female	108	93.9	8	88.9	90	93.75
<b>Faculty/Staff</b>	442	15.5	33	6.18	411	16.29
Male	28	6.33	1	3.03	26	6.33
Female	414	93.7	32	97	385	93.67
<b>Spouse</b>	9	0.31	2	0.37	9	0.36
Male	0	0	0	0	0	0
Female	9	100	2	100	9	100
<b>Other</b>	724	25.3	132	24.7	661	26.2
Male	121	16.7	22	16.7	115	17.4
Female	603	83.3	110	83.3	546	82.6
<b>#</b>	<b>Classes</b>	<b>%</b>	<b>Sessions</b>	<b>%</b>	<b>Participants</b>	
Southeast Missouri	15	100	613	100	2861	
	<b>Unique Participants</b>			<b>Participations</b>		
	534			2523		



### Student Recreation Center Usage Summary

Total students/members usage of the SRC, not including visitors for campus events such as commencement or move in day.

	<u>FY 17</u>	<u>FY 18</u>	<u>FY 19</u>	<u>FY 20</u>
July	6,879	6,944	4,883	4,191
August	16,652	15,982	13,100	11,816
September	23,896	21,410	16,772	18,357
October	23,996	23,798	18,369	17,937
November	19,239	19,079	13,780	15,046
December	13,705	11,312	8,724	8,910
January	24,083	22,042	18,494	14,563
February	28,769	25,453	22,186	21,134
March	25,096	19,605	18,965	9,121
April	20,561	20,845	17,338	0
May	10,943	7,845	6,261	1,230
June	7,163	4,739	4,002	3,866
<b>Totals</b>	<b>220,982</b>	<b>199,054</b>	<b>162,874</b>	<b>126,171</b>

### Student Aquatic Center Usage Summary

	<u>FY 17</u>	<u>FY 18</u>	<u>FY 19</u>	<u>FY 20</u>
Students	6,291	5,693	5,956	3,997
Members	4,075	3,710	2,949	3,707
Community	1,550	2,224	3,220	788
Jackson H.S.	2,207	2,214	2,379	1,447
Athletics	313	285	385	315
Wknd Parties	3,381	2,448	4,077	2,777
Special Events	19,171	17,718	18,613	4,044
<b>Totals</b>	<b>36,988</b>	<b>34,292</b>	<b>37,579</b>	<b>17,075</b>

### Membership Summary

FY 2020 - 7/1/2019 - 06/30/2020

	All				Monthly Full	Monthly			SRC Month	SRC Year	Totals
	Full	Inclusive	SAQ	Limited		All Inclusive	Early Month	Early Year			
UA	4	14	2	3	0	0	7	16	290	85	<b>421</b>
Alumni	0	1	2	2	0	0	6	12	41	17	<b>81</b>
Community	1	3	1	0	0	1	5	4	35	15	<b>65</b>
<b>Totals</b>	<b>5</b>	<b>18</b>	<b>5</b>	<b>5</b>	<b>0</b>	<b>1</b>	<b>18</b>	<b>32</b>	<b>366</b>	<b>117</b>	<b>567</b>

**FY 2019 - 7/1/2018 - 06/30/2019**

	All				Monthly		Early Month	Early Year	SRC Month	SRC Year	<b>Totals</b>
	Full	Inclusive	SAQ	Limited	Full	Inclusive					
UA	64	114	38	27	22	11	10	18	168	163	<b>635</b>
Alumni	15	10	31	7	10	2	1	9	31	9	<b>125</b>
Community	10	8	18	2	3	1	0	2	22	6	<b>72</b>
<b>Totals</b>	<b>89</b>	<b>132</b>	<b>87</b>	<b>36</b>	<b>35</b>	<b>14</b>	<b>11</b>	<b>29</b>	<b>221</b>	<b>178</b>	<b>832</b>

**FY 20 accomplishments**

- What began as a meeting with 15 interested students in E-sports has grown to a club of over 500 student members. Our E-sports club has competed in several local and national tournaments, with several of our student placing very high in their respective game play. Our twitch and other social media accounts continue to grow at a rapid pace and after surveying our club members found that 10 students chose Southeast based on our E-sports program, a number we are confident will only grow larger.
- We had several projects that were scheduled to be completed this past fiscal year, these project have been pushed off to this upcoming fiscal year due to the Covid 19 pandemic. Those include sanding and painting the west gym floor, new flooring in the main office, and new fitness equipment for the main cardio area in the SRC.
- Our department was asked to assist with several projects during the pandemic, projects that didn't necessarily fall without our area but that we were proud to help with. Those include hosting several drive through food pantries which served hundreds of our students, faculty and staff. We hosted the drive through cap/gown pick up and textbook drop off. Our department also stuffed over 8000 student kits for their return to campus which included masks and sanitizer. We were also the department that distributed those kits to our faculty and staff.
- Although we weren't able to accomplish all of our goals this past fiscal year, our biggest accomplishment was being able to as closely as possible offer our students their typical experience in our facility and with our programs. We took precautions and had our student's safety at the forefront of our minds, but also and possibly just as important we had their emotional well-being in our thoughts as well. We were one of the few recreational departments across the country who is hosting intramural play this fall. We were also one of the first recreation centers to open back up our doors after the outbreak

began. My staff has keep a positive attitude and chipped in where needed for this campus and our students and for that I'm extremely proud.

### Fiscal Summary

	FY 2020	FY 2019	FY 2018
<b>University Transfers</b>			
831000 Club Sports allocation from SGA	\$19,500	\$17,500	\$17,500
831000 xfer to fund lump sum merit		\$7,751	
<b>Total University Transfers</b>	<b>\$19,500</b>	<b>\$25,251</b>	<b>\$17,500</b>
<b>Student Recreation Center</b>			
501200 General Student Fee	\$2,259,531	\$2,333,358	\$2,438,238
507010 Camps Revenue	\$8,425	\$30,627	\$44,332
507020 Fees(Member,Intramural,sales,rent)	\$74,001	\$122,515	\$129,662
507060 Nontaxable Sales (Fitness, Instruction)	\$30,159	\$46,934	\$34,769
507090 Taxable Rental Income	\$38,701	\$55,629	\$55,181
507900 Intra Campus Charges Camps & Conferences	\$23,198	\$28,737	\$30,741
507100 Nontaxable Facilities	-\$4,110	-\$50	\$1,475
507220 Interest Income	\$33,665	\$42,087	\$32,971
507900 Intra Campus Charges	\$2,395	\$5,622	\$6,930
507900 Intra Campus Charges SRC Employee Benefit	\$21,282		
521100 Foundation Support	\$698	\$165	
831000 Nonmandatory Transfers-University Support	\$15,000	\$42,000	\$125,000
<b>Total Revenue</b>	<b>\$2,530,945</b>	<b>\$2,741,375</b>	<b>\$2,925,300</b>
<b>University Transfers</b>			
870000 Rec Services silver sponsorship-MLK	\$140	\$140	\$140
870000 xfer mandatory hiring delay	\$57,090	\$13,525	\$30,068
870000 Aquatic Ctr Window replacement		-\$1,145	\$7,480
870000 racquetball 1-3 front & side entry		-\$10,741	\$10,741
870000 SRC roof replacement		\$594,500	
870000 Zip Line mods high ropes capbaf	-\$1,509	\$11,800	
870000 Campus Network Upgrade revised capba		\$27,924	
870000 eSports Venue @ Towers Central		\$19,000	
870000 SRC Flooring Projects capbaf	\$143,565		
<b>Total University Transfers</b>	<b>\$199,287</b>	<b>\$655,003</b>	<b>\$48,429</b>
<b>SRC Custodial Services</b>			
620000 Faculty Staff Labor	\$81,785	\$25,662	
701000 Operating Expenditures	\$6,780	\$8,289	
<b>Total SRC Custodial Services</b>	<b>\$88,565</b>	<b>\$33,951</b>	
<b>Student Recreation Center</b>			
610000 Student Labor	\$213,580	\$330,550	\$370,038
620000 Faculty Staff Labor	\$459,059	\$604,471	\$581,978
701000 Operating Expenditures	\$142,172	\$270,020	\$235,912



	Staff Fee Waiver	\$2,730	\$2,225	\$2,182
	Graduate Asst Fees	\$32,510	\$23,030	\$21,776
703200	Utilities (North)	\$260,000	\$260,000	\$260,000
711400	Bond Administrative Cost	\$90	\$90	\$90
719060	Bad Debts Expense	\$40	\$158	\$161
780000	Equipment	\$17,825	\$57,526	\$2,993
850000	Transfer Expense-Debt Retirement	\$925,290	\$924,232	\$922,712
870000	SRC N Roof Replacement Loan payment	\$10,000	\$10,000	\$10,000
870000	Transfer Expense-Campus Life			\$8,223
870000	Transfer Expense-VP for Aux Support	\$11,657	\$12,507	\$32,450
	<b>Total Student Recreation</b>	<b>\$2,074,953</b>	<b>\$2,494,809</b>	<b>\$2,448,514</b>

Recreational Services - Club Sports

620000	Faculty Staff Labor			
701000	Operating Expenditures	\$14,418	\$24,648	\$23,227
	<b>Total Recreational Services - Club Sports</b>	<b>\$14,418</b>	<b>\$24,648</b>	<b>\$23,227</b>

Non Budgeted Entries

620000	Faculty Staff Labor	-\$5,645	\$856	\$379
	<b>Total Expenditures</b>	<b>\$2,371,578</b>	<b>\$3,209,267</b>	<b>\$2,520,549</b>

**Net Revenue/Expense**

**\$159,367    -\$467,892    \$404,751**

**Fund Balance**

	<i>Revenue</i>	<i>Expenses</i>	<i>Net</i>	<i>Fund Balance</i>
FY20	\$2,510,747	\$2,351,380	\$159,367	\$1,461,285
FY19	\$2,715,959	\$3,183,851	(\$467,892)	\$1,301,918
FY18	\$2,907,800	\$2,503,049	\$404,751	\$1,769,811

## Office of Residence Life

The University provides a variety of on-campus living options. These options include traditional dormitories, the oldest Cheney Hall dating back to the late 1930s to the suite-style Dobbins Center which opened in 2014 and the Greek Village leased properties that opened in 2016 and 2017.



### Mission

We endeavor to provide a residential experience which supports student success.

### Vision

We recognize the unique role of college students as future leaders in our society and community. In support of this role, our residential programs and services enhance the development of college students through the integration of the classroom and co-curricular educational experiences.

We recognize students as members of diverse communities who each possess individual needs and goals.

To support student's needs and goals, we foster opportunities for personal development through individualized interactions between students, staff, and family members.

### FY20 Recap

Due to the second year of declining housing contracts, Dearmont Hall was closed for fall 2019. This decision was made in spring 2019 before the start of the room selection process. Dearmont opened in 1960 and was named after Washington Strother Dearmont, the seventh president of the University. Four wings and a central complex surround the building's private courtyard. The dining hall in the complex was later closed and is still utilized academically as a demonstration



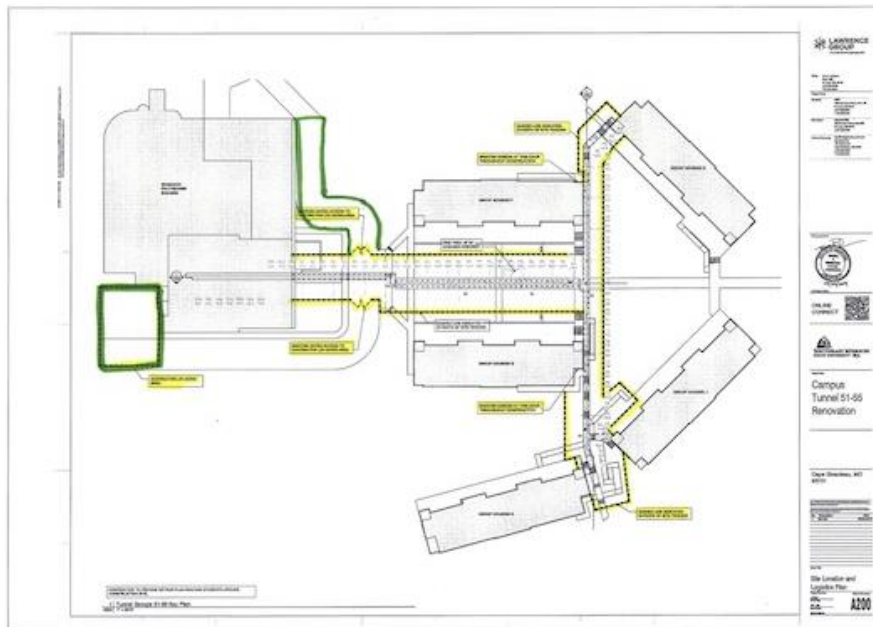
kitchen. Originally constructed as a community-style hall with shared restroom facilities on each floor and housing nearly 400 students, the double-occupancy rooms were changed to single-occupancy rooms beginning in fall 2014 and were quite popular with students. To accommodate student interest in single rooms, all of Towers South, located on the north side of campus as part of the Towers residence halls, was converted to single-occupancy rooms and the second beds and desks were removed.

Due to many issues with the elevators in both Towers North and Towers West and the age of the equipment making it difficult to get replacement parts easily the office began working with Facilities Management (FM) in fall 2019 to identify and hire an outside contractor to upgrade the elevators. Due to the nature of the work being done, each pair of elevators would take between 16-18 weeks to upgrade. In



consultation with FM, the decision was made to have the contractor take one elevator out of service in each building in mid-April 2020 to begin the upgrade. The work on those two elevators would then last until August 2020, when all four elevators were brought back in service for hall opening. The contractor would then repeat the process with the second set of elevators taking them out of service in late-August until the work is completed in December 2020.

The fire alarm system in Towers East received an upgrade during summer 2020. New smoke heads were installed in every student room and throughout the common areas. The old wiring was removed, and new wiring connected the new system to the panel in the Towers Complex. A similar project took place in Towers South during the summer of 2019.



The University contracted with an outside consultant during fall 2019 regarding the status of the over two miles of tunnels that run underneath much of campus. These tunnels carry important infrastructure pieces (water, sewer, fire suppression, electric, internet, and cable lines) to buildings throughout campus. In the Group Housing Area, these tunnels

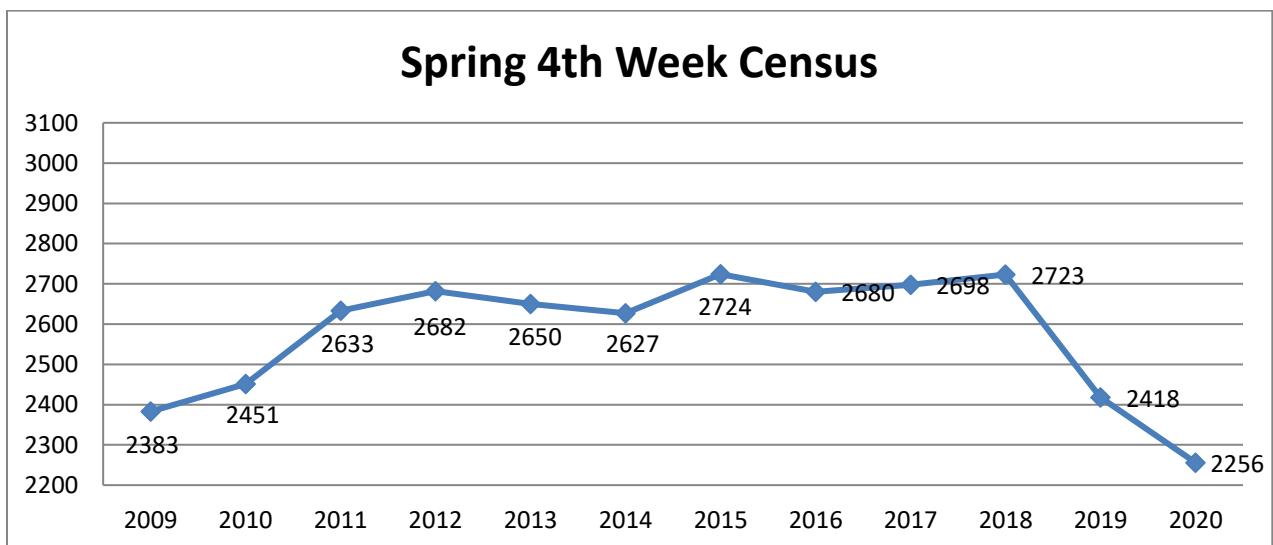
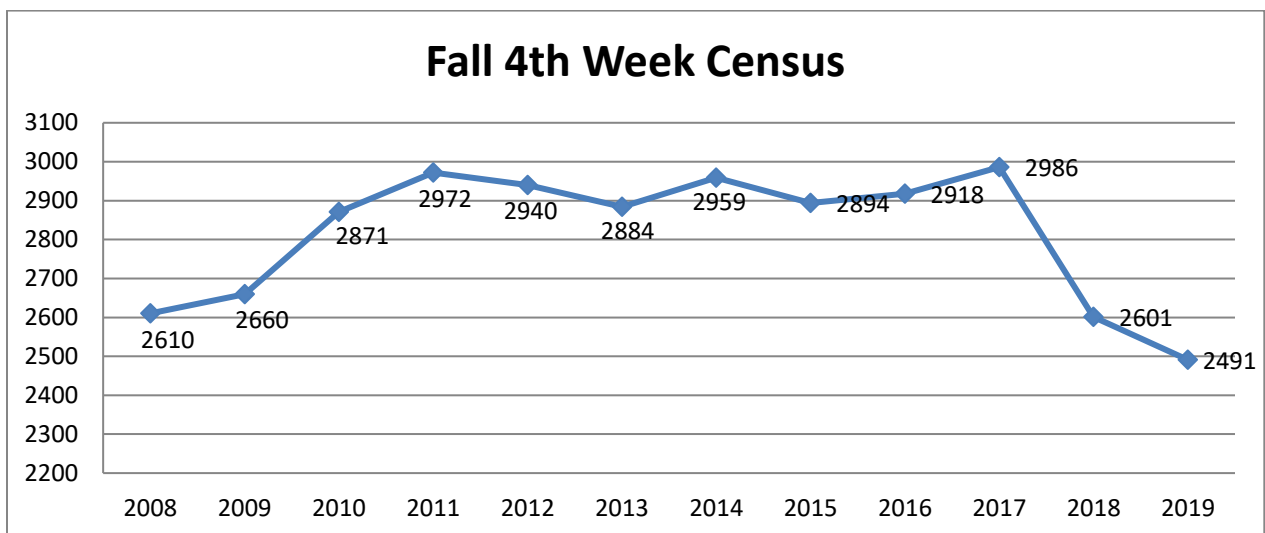
run under the sidewalk leading East-West between F & G Buildings and then North-South between F & K Buildings running to H & J Buildings and were identified as some of the worst on campus. In January 2019, contractors began repairing portions of the tunnels and replacing aging

equipment within the tunnel to prevent further issues with final completion in August 2020. To facilitate the work and provide a safe pathway for students, faculty, and staff to traverse the area around Group Housing, Seabaugh Polytech, and Rosengarten, fencing was installed around the entire construction area and additional lighting and cameras were installed at various locations around the worksite to ensure student safety.



### Occupancy Summary

The Residence Halls opened in fall 2019 with 2,522 students calling the residence halls their home. For the spring semester, 2020 they opened with 2,304 students.



*Average Annual Occupancy and Board  
(Actual)*

	FY20	FY19	FY18	FY17	FY16	FY15	FY14	FY13
Board Plans	2,564	2,773	3,017	2,936	2,896	3,048	3,028	2,876
Shared Rooms	2,369	2,509	2,850	2,803	2,785	2,839	2,753	2,797
Private Rooms	46	80	47	57	72	73	106	20
Opening Day Occupancy	2,522	2,698	3,067	2,946	2,940	3,040	2,939	3,006

**Fiscal Summary**

	Revenue	Expenses	Net	Fund Balance
FY20	\$23,609,028	\$24,945,322	(\$1,336,294)	547,023
FY19	\$24,718,453	\$25,576,583	(\$862,476)	\$1,883,317
FY18	\$26,872,094	\$26,124,909	\$747,185	\$2,745,793
FY17	\$25,313,053	\$25,997,056	(\$678,003)	\$1,998,608
FY16	\$24,186,615	\$25,016,266	(\$829,651)	\$2,676,611
FY15	\$24,749,094	\$24,325,823	\$423,271	\$3,506,262
FY14	\$23,402,385	\$25,141,736	(\$1,739,351)	\$3,082,991
FY13	\$22,206,180	\$20,647,081	\$1,559,099	\$4,822,342
FY12	\$21,728,718	\$23,728,718	(\$1,946,308)	\$3,263,243
FY11	\$20,842,597	\$18,818,821	\$2,023,776	\$5,209,551

		Actual 2020	Actual 2019	Actual 2018
<b>Revenue</b>				
101164	Contract payments-505100	\$ 17,717,977	\$ 22,985,858	\$ 25,116,082
	Room Contracts	\$ 11,571,697	\$ 14,530,786	\$ 16,187,524
	Private Rooms	\$ 111,364	\$ 235,395	\$ 133,332
	Board Contracts	\$ 5,947,555	\$ 8,101,788	\$ 8,698,676
	Other Room & Board	\$ 3,508	\$ (3,882)	\$ (3,979)
	Summer Room and Board Contracts	\$ 83,853	\$ 121,772	\$ 100,529
	Summer Room	\$ 22,911	\$ 75,129	\$ 56,090
	Summer Board	\$ 10,674	\$ 60,144	\$ 39,352
	Year end accrual	\$ 50,268	\$ (13,501)	\$ 5,087
101164	Cancellation administrative Fees	\$ 80,756	\$ 97,746	\$ 83,000
101164	Housing Buyout Fees cover COVID lost revenues	\$ 47,350	\$ 81,750	\$ 91,300
101154	Camps-507900	\$ 80,708	\$ 86,568	\$ 117,596
101164	Break & Early Arrival-507250	\$ 128,359	\$ 20,611	\$ 21,201
101164	Dearmont rental-831000	\$ 47,000	\$ 47,000	\$ 47,000
101164	Bank income-507100	\$ 1,500	\$ 1,500	\$ 1,500
101164	Interest Earned-507220	\$ 135,872	\$ 212,207	\$ 158,818
101164	Dobbins River Campus Center Suite Rent	\$ 20,000	\$ 20,000	\$ 20,000
100999	Vending Non-Soda-506000	\$ 15,235	\$ 11,451	\$ 12,648

101000	Vending Soda-506000	\$	24,207	\$	20,052	\$	20,486
101003	Small Appliance Rentals	\$	16,767	\$	17,855	\$	17,612
101004	Parking Meters-507060	\$	21,454	\$	34,004	\$	34,698
101153	Food svc comm-507110	\$	23,568	\$	56,583	\$	30,674
101174	Wash St apts-507100	\$	40,200	\$	40,200	\$	40,200
101179	CATV Billing-507020	\$	112,666	\$	151,706	\$	170,998
103455	Pi Kappa Alpha House	\$	141,721	\$	145,640	\$	132,154
103454	Sigma Chi House	\$	155,668	\$	153,352	\$	139,150
103456	Sigma Nu House	\$	155,202	\$	152,600	\$	143,742
103457	Sigma Phi Epsilon House	\$	162,946	\$	160,264	\$	159,376
101182	Hall Council Fees-507020					\$	85,490
101164	Technology Fee-507020	\$	112,666	\$	151,706	\$	170,998
101183	Damage chgs-505300	\$	39,499	\$	69,801	\$	57,369
<b>Total Revenue</b>		<b>\$</b>	<b>23,609,028</b>	<b>\$</b>	<b>24,718,453</b>	<b>\$</b>	<b>26,872,094</b>

### Expenses

100812	Utilities	\$	1,589,860	\$	1,570,542	\$	1,649,669
	Personnel	\$	232,477	\$	207,256	\$	182,943
	Operations	\$	1,357,383	\$	1,363,287	\$	1,466,726
100803	Custodial	\$	1,447,599	\$	1,579,698	\$	1,583,979
	Student Labor	\$	58,599	\$	71,226	\$	71,275
	Personnel	\$	1,303,398	\$	1,334,312	\$	1,379,922
	Equipment					\$	11,787
	Operations	\$	80,870	\$	171,787	\$	118,570
	Scholarships-701410	\$	4,731	\$	2,372	\$	2,425
100792	Maintenance	\$	196,636	\$	260,208	\$	282,960
	Student Labor	\$	19,578	\$	8,824	\$	24,978
	Personnel	\$	20,949	\$	51,298	\$	25,767
	Equipment			\$	495		
	Operations	\$	156,109	\$	199,591	\$	232,215
100805	Svc contracts	\$	212,449	\$	174,693	\$	163,884
	Operations	\$	212,449	\$	174,693	\$	163,884
100948	Building and Grounds	\$	50,480	\$	48,245	\$	54,853
	Personnel	\$	50,480	\$	48,245	\$	47,572
	Operations					\$	7,281
100998	Washers & Dryers	\$	112,608	\$	124,848	\$	131,238
101003	Small Appliance Rentals	\$	4,605	\$	290	\$	79
101004	Parking Meters	\$	732	\$	572	\$	5,589
101008	Card Access	\$	30,444	\$	18,876	\$	28,192
101000	Recycling-871000	\$	7,500	\$	7,500	\$	7,500
101164	Univ. Overhead-871000	\$	1,500,000	\$	1,692,200	\$	1,662,200
101164	Campus Life-871000					\$	95,623
	VP for Aux Support	\$	174,856	\$	187,603	\$	102,045
101160	Group Office (Greek Life subsidy)	\$	46,372	\$	46,200	\$	58,393

101164	Shuttle Support (cameras FY21&22)	\$ 25,000	\$ 25,000	\$ 25,000
101167	Res Life Leadership Award	\$ 1,039,062	\$ 754,074	\$ 565,000
101164	Bonds adm exp-711400	\$ 2,678	\$ 2,678	\$ 2,628
101164	Debt Service-851000	\$ 8,269,585	\$ 8,261,688	\$ 8,272,111
101164	Bad debt-719060	\$ 35,000	\$ 35,000	\$ 35,000
101164	Collection costs-719070	\$ 14,103	\$ 19,283	\$ 13,093
101153	Food svc contract	\$ 5,881,841	\$ 6,857,834	\$ 7,374,699
	Board payments	\$ 5,755,196	\$ 6,719,128	\$ 7,220,988
	Fall/Spring Board	\$ 5,716,246	\$ 6,652,354	\$ 7,175,985
	Summer Board	\$ 38,950	\$ 66,774	\$ 45,002
	Houck's Place Note payment	\$ 40,123	\$ 50,000	\$ 50,000
	UC Commission	\$ 60,000	\$ 60,000	\$ 60,000
	Misc expenses	\$ 26,522	\$ 28,706	\$ 43,711
101154	Summer housing	\$ 31,708	\$ 29,120	\$ 40,709
	Student Labor	\$ 30,226	\$ 26,427	\$ 38,673
	Operations	\$ 1,482	\$ 2,693	\$ 2,036
101156	Cheney Operations	\$ 160	\$ 120	\$ 9,788
	Student Labor			\$ 1,931
	Operations	\$ 160	\$ 120	\$ 7,856
101158	Dearmont Operations	\$ 1,442	\$ 95,919	\$ 99,968
	Student Labor		\$ 12,538	\$ 18,184
	Personnel		\$ 8,597	\$ 8,597
	Operations	\$ 1,442	\$ 74,784	\$ 73,186
101160	Group Operations	\$ 75,716	\$ 108,306	\$ 144,601
	Student Labor			\$ 3,224
	Personnel			\$ 8,597
	Operations	\$ 75,716	\$ 108,306	\$ 132,780
101163	Myers Operations	\$ 76,087	\$ 113,385	\$ 96,647
	Student Labor	\$ 14,317	\$ 18,758	\$ 12,499
	Personnel	\$ 3,081	\$ 8,597	\$ 8,597
	Operations	\$ 58,689	\$ 86,030	\$ 75,551
101164	Central Office	\$ 612,102	\$ 595,338	\$ 662,140
	Student Labor	\$ 57,044	\$ 73,982	\$ 68,662
	Personnel	\$ 424,422	\$ 407,502	\$ 420,879
	Equipment		\$ 2,051	\$ 24,303
	Operations	\$ 127,638	\$ 105,327	\$ 143,568
	Scholarships-701410	\$ 2,998	\$ 6,475	\$ 4,728
102365	Residence Hall Directors	\$ 423,423	\$ 382,335	\$ 333,089
101987	Professional Training & Development	\$ 13,325	\$ 25,798	\$ 17,501
101988	Student Staff Training & Development	\$ 15,657	\$ 22,472	\$ 24,364
101989	Professional Recruitment	\$ 648	\$ 13,258	\$ 11,072
101995	Resource Room		\$ 2,248	\$ 2,042
101991	Learning Communities	\$ 14,658	\$ 20,708	\$ 16,349
101992	Departmental Programming	\$ 3,859	\$ 10,898	\$ 7,322
101165	Towers central complex	\$ 50,373	\$ 42,212	\$ 52,338



	Student Labor	\$	34,122	\$	30,211	\$	35,856
	Personnel	\$	8,686	\$	10,891	\$	8,597
	Operations	\$	7,565	\$	1,110	\$	7,885
101168	Towers East	\$	84,436	\$	86,545	\$	93,067
	Student Labor	\$	2,095				
	Personnel	\$	4,343				
	Operations	\$	77,997	\$	86,545	\$	93,067
101169	Towers North	\$	50,100	\$	108,790	\$	109,418
	Operations	\$	50,100	\$	108,790	\$	109,418
101170	Towers South	\$	81,983	\$	136,783	\$	113,606
	Student Labor	\$	2,490	\$	5,550	\$	5,640
	Personnel	\$	8,686	\$	8,597	\$	8,597
	Operations	\$	70,806	\$	122,636	\$	99,369
101171	Towers West	\$	51,477	\$	126,979	\$	131,861
	Student Labor	\$	(42)	\$	5,465	\$	4,376
	Personnel			\$	8,597	\$	8,597
	Operations	\$	51,519	\$	112,917	\$	118,888
102220	Henderson Hall			\$	320	\$	25,286
	Student Labor					\$	5,178
	Operations			\$	320	\$	20,108
101172	Property Insurance	\$	89,831	\$	76,115	\$	75,992
101173	TV Common Area	\$	368	\$	-	\$	-
101178	Food Serv. Equip.	\$	37,780	\$	42,996	\$	29,499
	Equipment			\$	11,415	\$	-
	Operations	\$	37,780	\$	31,581	\$	29,499
101179	Cable TV	\$	90,272	\$	103,727	\$	110,850
103455	Pi Kappa Alpha House	\$	1,353	\$	650	\$	(2,868)
103454	Sigma Chi House	\$	459	\$	841	\$	(1,797)
103456	Sigma Nu House	\$	2,088	\$	1,437	\$	2,311
103457	Sigma Phi Epsilon House	\$	3,620	\$	229	\$	1,476
101182	Hall Council fees					\$	85,635
101183	Room damages	\$	54,845	\$	59,830	\$	62,064
	Operations	\$	54,845	\$	59,830	\$	62,064
101184	Readership Program			\$	2,448	\$	7,918
101185	Vandiver Hall	\$	87,269	\$	106,489	\$	103,983
	Student Labor	\$	12,004	\$	14,772	\$	13,803
	Operations	\$	75,264	\$	91,718	\$	90,180
102320	Merick Hall	\$	69,576	\$	85,226	\$	92,092
	Student Labor	\$	11,053	\$	15,256	\$	21,943
	Operations	\$	58,524	\$	69,970	\$	70,148
102893	LaFerla Hall	\$	80,485	\$	96,862	\$	95,732
	Student Labor	\$	13,380	\$	16,266	\$	15,496
	Operations	\$	67,105	\$	80,596	\$	80,236
103182	Dobbins Center	\$	56,267	\$	88,863	\$	90,877

	Student Labor	\$ 15,890	\$ 23,278	\$ 23,722
	Personnel		\$ 7,642	\$ 6,686
	Operations	\$ 40,377	\$ 57,944	\$ 60,468
101993	Facility Renewal	\$ 2,142,547	\$ 1,326,653	\$ 1,266,242
	Equipment	\$ -		\$ 11,483
	Operations	\$ 2,142,547	\$ 1,326,653	\$ 1,254,758
101164	Contingency-719500			
Total Expenses, w/o Contingency		\$ 24,945,322	\$ 25,580,929	\$ 26,124,909
<b>Total Expenses, with Contingency</b>		<b>\$ 24,945,322</b>	<b>\$ 25,580,929</b>	<b>\$ 26,124,909</b>
<b>Revenue vs. Expenses</b>		\$ (1,336,294)	\$ (862,476)	\$ 747,185

**Room and Board Rate Increases**

	<i>Room</i>	<i>Board</i>
FY21	1.70%	2.52%
FY20	3.97%	0.49%
FY19	1.53%	2.00%
FY18	1.97%	3.50%
FY17	1.51%	3.51%
FY16	0.50%	0.00%
FY15	0.00%	4.00%
FY14	2.65%	3.50%
FY13	2.40%	5.00%
FY12	3.40%	4.25%
FY11	2.90%	3.10%

**Recent Residence Hall Facility Changes, FY18-FY20**

- Cheney Hall closed
- Henderson Hall closed
- Dearmont closed

**Programming Accomplishments**

**Move-In Day**

The University and the Office of Residence Life have developed a special move-in process exclusively for new students through a “one-stop-shop” at the Student Recreation Center. There, students find a centralized hall check-in process and a wide range of staff and services available to assist them with their needs. In addition to completing medical information,



receiving their Convocation t-shirt, and picking up their room key, students can:

- Meet some of the Residence Life professional and student staff
- Register a vehicle and receive a parking permit

- Meet staff from various University departments and receive information about the services they provide
- Visit displays by local businesses and learn about services and products on site

After check-in, students are directed to their respective residence halls to move-in. To provide students with additional assistance moving in, large crews of student volunteers are present to greet them at their residence hall and help them move everything from their car to their room.

- **910** residents checked in on “Move-In Day”
- **1349** student volunteers from 36 student organizations or athletic teams helped facilitate the process

	<b>2019</b>	<b>2018</b>	<b>2017</b>	<b>2016</b>	<b>2015</b>	<b>2014</b>	<b>2013</b>
6am-7am	65	70	86	123	92	138	123
7am-8am	72	79	122	154	135	154	149
8am-9am	165	113	163	214	168	204	275
9am-10am	138	177	200	228	187	226	290
10am-11am	163	163	256	217	205	242	179
11am-Noon	141	135	152	166	93	70	70
Noon-1pm	111	87	126	112	87		8
1pm-2pm	55	45	31	25	22		
<b>Total</b>	<b>910</b>	<b>869</b>	<b>1136</b>	<b>1239</b>	<b>989</b>	<b>1034</b>	<b>1094</b>

### **Special Interest Housing**

Select residential communities (e.g., themed and learning communities) are specifically designed to enhance the academic success and residential experience of our on-campus students. This is accomplished by building a community in which they are surrounded by students with similar academic interests, career goals, and/or interests. To support the work of the communities, specialized programming that is designed by staff and faculty from specific academic areas, and providing access to resources that will aid in classroom success.

The Office of Residence Life, in conjunction with alumni donors and our many academic partners, offered the following themed/learning community experiences during the **2019-2020** academic year:

- Agriculture and Environmental Science Community
  - 29 first-year and upper-class residents
  - Housed on one wing in LaFerla Hall
- Arts and Media Collective
  - 18 first-year and upper-class residents
  - Housed on two floors in Towers East (male participants were on one floor of the building and female participants on another)
- Business Learning Community
  - 26 first-year students
  - Housed on one wing in LaFerla Hall
- Cybersecurity/Computer Science/Engineering Community
  - 30 first-year and upper-class residents
  - Housed on one wing in LaFerla Hall
- Future Medical Professionals Community
  - 34 first-year and upper-class residents
  - Housed on one wing in LaFerla Hall
- Honors Learning Community
  - 51 first-year and upper-class residents
  - Housed on two wings (one floor) in LaFerla
- Integrated Science Community
  - 29 first-year and upper-class residents
  - Housed in one half of H-Building in Group Housing
- Military/Veterans Community
  - 10 first-year and upper-class residents
  - Housed on one floor in Vandiver Hall
- Pet-Friendly Community
  - 7 first-year and upper-class students
  - Housed on two floors in Myers Hall
- SEMO StartUps Learning Community
  - 11 first-year and upper-class residents
  - Housed on one wing in LaFerla Hall
- Tomorrow's Teachers Learning Community
  - 24 first-year residents
  - Housed on one wing in LaFerla Hall
- Visual and Performing Arts (VPA) Community
  - 165 first-year and upper-class residents
  - Housed at the Dobbins River Campus Center

## Student Leadership

**Residence Hall Association (RHA)** The Residence Hall Association (RHA) is the governing body for students living in the residence halls. RHA provides a voice for students as well as activities throughout the year. This year, RHA hosted a new event series for recruitment at the beginning of the year. The weeklong RHA week program consisted of tabling events and culminated in a movie night on the Academic Terraces. Other programs hosted by the organization were a trivia night and a DIY lava lamp program. This year, the executive board placed more emphasis on leadership development and regional involvement with the Midwest Affiliate of College and University Residence Halls (MACURH). We saw great successes at regional conferences, and our President, Rachel Cundy, successfully bid for a position on the Regional Board of Directors for the 2020-2021 academic year.



RHA's purpose is to:

- To provide a unified voice for students residing in the University housing facilities.
- To ensure student involvement in the University and Residence Life policy-making process.
- To encourage and facilitate inter-hall cooperation.
- To discuss and promote the issues of students in the residence halls.
- To provide a means for improving physical, educational, social, and cultural standards of living in the residence halls.

The RHA general body is comprised of an Executive Board and representatives from each of the residence halls. One representative is selected for every 75 residents in the residence hall. RHA general body meetings occur each week and are open to all residence hall residents.

### FY20 Budget Overview:

Carryover from FY19: \$19,231

Summary Totals:

- Net revenue FY20: \$45,466
- Net expenditures FY20: \$10,286



**National Residence Hall Honorary (NRHH)** is the premiere honorary supported by the leading international organization advocating for the interests and welfare of residence hall students, while also providing opportunities for their personal growth and development. NRHH strives to provide recognition for individuals who have contributed to the advancement of college and university housing. NRHH membership is limited to the top 1% of students living in the residence halls at Southeast Missouri State University.



**Rho Alpha Sigma** Alpha Sigma.

**Rho Alpha Sigma** is a national Resident Assistant honor society. The Alpha Epsilon chapter at Southeast Missouri State University exists to recognize the outstanding efforts of Resident Assistants on our campus. Each year, up to 10% of the total Resident Assistant population on campus may be selected for induction into Rho

### **Resident Assistant Accomplishments**

Resident Assistants, commonly known on campus as RAs, are a diverse group of well-qualified student staff available in each residence hall. RAs work closely with residents to facilitate the academic, personal, and social success of every student in the residence halls. Their position requires them to be a mediator, programmer, counselor, custodian, and mentor to some degree. Most importantly these individuals are expected to be successful students and leaders on campus.

Resident Assistants participated in an online training program, like an online class, over the summer through Moodle, which provided them with basic information related to their position, in preparation for face-to-face training in the fall. The online training involves studying PowerPoint presentations and case studies and responding with a quiz, essay, or forum post before returning to campus in August. Much of the studied materials are tangible or administrative items that are reviewed in the face-to-face training portion. Face-to-face training is focused on putting RAs in real-life scenarios they will see in their jobs throughout the year. We focus on team building and emotional intelligence while playing out mock scenarios to give RAs a chance to physically witness and participate in handling crisis situations. Spring 2020 RA training focused on assisting new RAs with job requirements and refresher sessions for returning RAs.

### **FY20 RA Selection**

In fall 2019 a process was held to hire new Resident Assistants for the spring 2020 semester. This was due to several staff members graduating, leaving to complete student teaching responsibilities, etc. There were **39 applicants** for the **9 positions**.

Due to changes in the staffing levels in several residence halls for the 2020-2021 academic year, the overall number of Resident Assistants was decreased from 75 to 70. These changes are most

visible in Towers East where the staff was decreased from 11 to 6 to match the other Towers halls. Resident Assistants are being placed on each of the even floors in those buildings and will be responsible for the floor they live on and the floor directly above them.

During spring 2020 the selection committee received 160 applications for the 70 Resident Assistant positions available for the 2020-2021 academic year.

- 52 returning Resident Assistant applications
- 108 eligible new Resident Assistant applications
- 44 individuals offered Alternate positions

In addition to our traditional RA selection process, a process was held to identify 4 Senior Resident Assistants (SRAs) who were strategically placed in Towers East, Towers South, Myers, and Vandiver Halls to provide additional support to the Hall Directors who would be entering their first full year managing 2 buildings. To apply for the SRA role, staff members had to have worked with our office as a traditional RA for at least one year, and a higher GPA requirement of 2.85 had to be met. There was a large interest in the position from returning staff:

- 12 applicants for 4 positions
- All 8 of the remaining applicants were absorbed into traditional RA positions

A process was also held to identify four Chapter Assistants for the houses in Greek Village. We have continued challenges getting a quality applicant pool presented from the chapters:

- 5 applicants for 4 positions

### ***RA Academic Success***

- 10 Resident Assistants with 4.00 cumulative grade point averages Fall 2019.
- 10 returning Resident Assistants with 4.00 cumulative grade point averages for Spring 2020.
- 20 Resident Assistants with 4.00 Fall 2019 semester grade point averages.
- 34 returning Resident Assistants with 4.00 Spring 2020 semester grade point averages.
- 6 Resident Assistants graduate in December 2019.
- 18 Resident Assistants graduated in May 2020.

### **Coronavirus Pandemic (COVID-19) Response**

COVID-19 created some unique and unprecedented challenges for the Office of Residence Life in the spring and summer of 2020. When the decision to move to remote learning for the rest of the semester and close the campus was made during spring break, a plan was developed to bring students back to campus over nine days to pack up their rooms and move out. Specific move-out days and times were identified for each building to allow for social distancing. Resident Assistants were released for the semester. Those who expressed an interest in remaining on campus for the



spring participated in the duty rotation and retained their scholarship. The Hall Director and Area Coordinator team spent two days after move out checking all vacant residence hall rooms on campus and custodial began cleaning Towers East, which had been identified to remain open for students approved to stay on campus for the rest of the semester. Approximately, 130 requests were received by students to delay their move out or remain on campus for the rest of the semester. 87 students were approved and 72 eventually remained on campus through finals week in May.

Students who moved out of the halls by March 31, 2020, received a 45% credit of their housing, meal plan, and parking for the spring semester. Residents who remained on campus for the semester were charged the Towers East rate and may have received a small credit if they had moved from more expensive housing. Housing and meal plan credits from the spring amounted to over \$4.8 million.

Central office staff members started working from home in late March and were the first staff members to return to campus during finals week in May when students began transitioning out of spring housing in Towers East and into summer school housing in Towers South. A total of 81 students ended up staying in summer school housing. The office intended to host several camps and conferences during the summer, however, many were canceled due to COVID-related concerns. By the end of the summer, only internal camps hosted by Campus Life (Camp Redhawk) the Holland College of Arts and Media occurred on campus and stayed in the residence halls.

## **Southeast Bookstore**

Follett Higher Education Group provides bookstore, textbook, and related services to the campus community. The Bookstore is currently staffed by two full-time, one part-time, and six student employees.



## **FY 20 Recap**

In 2019, Follett rebranded IncludED to Follett Access. The current program at SEMO ensures student success by integrating with the LMS to automatically deliver digital access course materials to students. The Follett Access program can be much more. Follett Access is a powerful program that enables the university to deliver all course materials (textbooks, rental, digital, lab kits, OER, supplies, etc.) as part of tuition and fees.

Fall 2020 saw ten courses move from Follett Access to Cengage Unlimited. The Cengage Unlimited program offers students inclusive access to all of their Cengage course materials with one purchase price. This access includes online homework, test prep, e-text and up to 4 free hardcopy textbook rentals.

The March shutdown drastically impacted inventory and sales for the remainder of FY20. All hourly staff was furloughed during this time, but the manager continued to maintain bookstore operations. With no on campus students or foot traffic the bookstore relied solely on the website for revenue. Online orders continued, summer and fall adoptions were entered and researched. Spring books were returned, and summer books ordered. The bookstore opened to the public on May 19, 2020 to facilitate spring textbook returns and summer book purchase.

## **Mission**

The mission of Southeast Bookstore is to enhance and support the educational mission of Southeast Missouri State University by providing essential and affordable educational resources and supplies, quality emblematic and branded merchandise and much more.

## **Vision**

We will achieve our mission by providing:

- A knowledgeable team of dedicated employees
- A respect for our diverse customers
- A clean, safe and accessible establishment for all customers and employees
- A cost-effective business with high-quality merchandise at reasonable prices
- A positive working relationship with Southeast Missouri State University and the University Community
- Exceptional customer service

## Contract Details

- The agreement auto-renews each year unless either party gives 120 day notice
- The University receives 12.1% of gross revenue up to \$2,500,000 and 13.1% over \$2,500,001. Commission is paid monthly
- Students are permitted to use a “student charge” up to \$500 per semester. These are applied to their student account for purchases at the Bookstore
- The renovation costs are amortized over five years and were approximately \$360,000 in value
  - \$310,000 in capital to renovate the bookstore and stadium fan shop.
  - \$50,000 to reinvigorate the campus bookstore.
- University employees receive a 10% discount on purchases and on the “First Friday” of each month the Bookstore offers a 25% discount on all clothing for any customer
- The Bookstore provides \$5,000 annually for textbook scholarships



## Fiscal Summary

Follett’s fiscal year runs April 1 to March 31.

College bookstore sales have been falling over the last 5 years and Southeast Bookstore sales reflect that trend.

- Fiscal Year 20 sales \$1,297,747
- Fiscal Year 19 sales \$1,360,220
- Fiscal Year 18 sales \$1,484,535

<i>Sales</i>	<i>FY20</i>	<i>FY19</i>	<i>FY18</i>	<i>FY17</i>	<i>FY16</i>
Used Text	\$33,708	\$43,993	\$57,217	\$52,237	\$56,430
New Text	\$377,207	\$331,574	\$383,182	\$381,601	\$775,122
Digital Text	\$75,284	\$111,934	\$113,413	\$134,557	\$87,893
Gen Books/ Non-emblem	\$32,770	\$39,605	\$40,095	\$48,373	\$56,511
Supplies	\$79,566	\$86,833	\$90,525	\$85,378	\$97,705
Apparel	\$427,569	\$451,048	\$475,366	\$508,231	\$531,070
Gifts	\$60,605	\$66,689	\$72,439	\$75,927	\$71,706
Convenience & Graduation	\$26,594	\$31,810	\$34,505	\$39,999	\$45,106
Technology	\$126,141	\$137,353	\$150,175	\$74,508	\$104,055
Book Rental	\$58,303	\$59,381	\$67,621	\$85,159	\$71,244
<b>Total</b>	<b>\$1,297,747</b>	<b>\$1,360,220</b>	<b>\$1,484,535</b>	<b>\$1,485,969</b>	<b>\$1,896,842</b>

## Usage Summary

- Southeast Bookstore buys back textbooks every day; In FY20 the Bookstore returned \$3098 in cash to students for buybacks.
- The Bookstore rental program saves students an average of 45% over the price of a new text. FY20 had 3311 rental books checked out. 139 titles were not returned, 60 were collected and 18 were sent to the collection agency.
- Southeast Bookstore offered free shipping for spring 2020 rental books. \$5748 was spent in return shipping of spring rental textbooks.
- The Bookstore processed 3776 online sales in FY20 totaling \$228,873.

## Presence on Campus

The Bookstore is engaged at various campus events and committees including:

*Most of these events were cancelled in FY20/21 due to Covid-19*

- Kiosk at home football games
- Admissions Tour coupons for 20% off
- OER Advisory Group
- Partner with Textbook Rental for textbook adoptions
- First Step Info to Go Fair
- Show Me Day Fair
- Kiosk at Saturday basketball games
- Athletics Sponsor
- Author Events/book signing
- Bi Annual Faculty and Staff Appreciation event
- New Faculty & Staff Orientation
- Reading Across America events

## Challenges and Opportunities

The Bookstore remained open online during the shutdown. Hourly staff was temporarily laid off, however, the manager continued to work on campus fulfilling online orders, finalizing summer and fall textbook adoptions, ordering textbooks and processing rental textbook check in. Southeast Bookstore also helped fulfill textbook orders for other Follett campus' that were completely shut down – the campus store was not allowed to operate. Hourly staff began returning in May and the store began offering curbside order pick up and rental check in.

There were many missed sales opportunities from cancelled spring events. The current sales for FY21 are down 27% and this sales decline will continue to impact FY21, as missed sales will not be made up by any spring events.

The shutdown impacted every aspect of our retail operation. The March closure meant very limited nationwide book buyback. This limited the amount of cost saving used textbooks available for fall purchase. Publishers and manufacturers returned in late summer at half capacity. This placed a strain on new textbooks, course supplies, school supplies, electronics, and mask availability. While supply issues have improved, they are not back to full capacity and shortages and slow fulfill rates will continue into 2021.

Back to school was drastically impacted by the social distancing measures and by the spring shut down. Most incoming students did not have an on campus orientation experience and many students were unsure how to find their books and course supplies. The anxiety and confusion lead to much frustration with the online order and pickup process. Southeast Bookstore and Textbook Rental are working together to help create improved communication with current and incoming students so there is a better understanding of the two locations and what we offer.



Southeast Bookstore is working to bring in new items featuring the new SEMO Redhawk logo. There will be many opportunities to serve the campus community with the anticipated spring sports programs, campus visits, orientation, and other events. It is our hope that supply delays will be overcome by spring so we can offer a more robust clothing and gift selection.

## Student Auxiliary Services

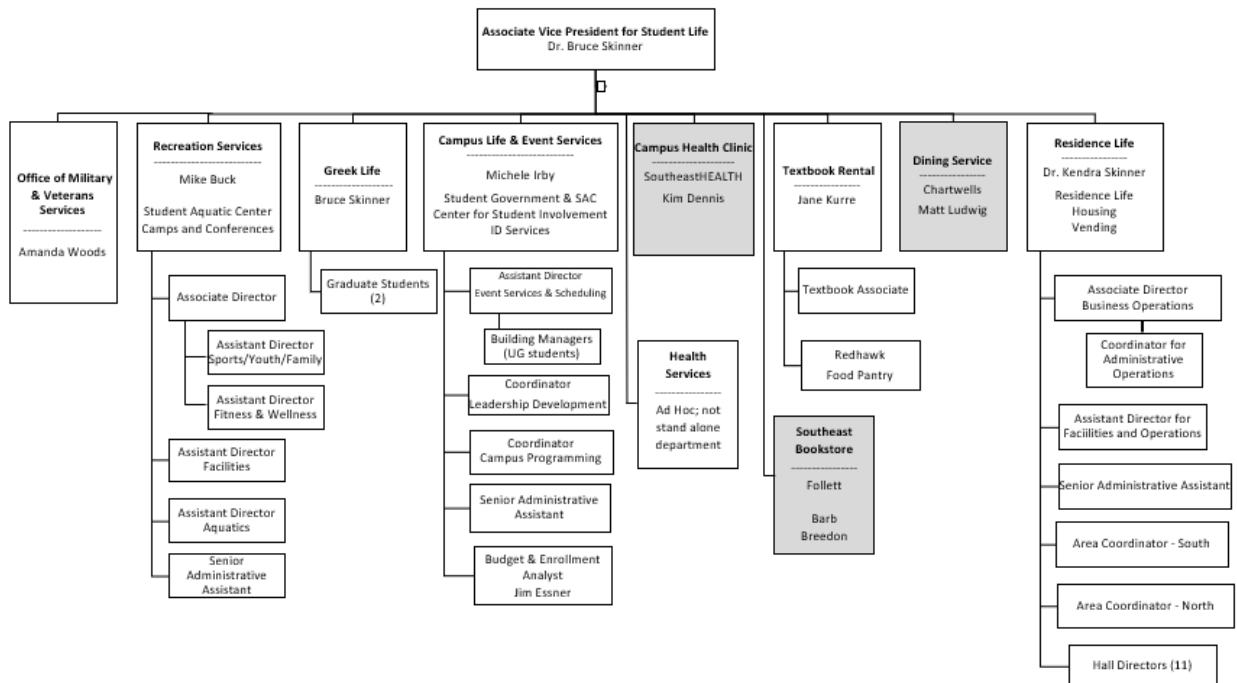
Operating as an administrative office that has supervisory authority for a variety of university offices, Student Auxiliary Services has only one staff member, the Associate Vice President for Student Life. The office works to coordinate the actions of multiple student services offices, including a variety of contracted services.



## Organizational Chart

The Division of Enrollment Management and Student Success is lead by Dr. Debbie Below, Vice President for Enrollment Management and Student Success. Within the division, eight departments or functional areas are supervised by Dr. Bruce Skinner, Associate Vice President for Student Life, who in turn reports to Dr. Below.

Shaded areas of the organizational chart are contracted services, Chartwells for dining; Follett for Bookstore operations, and the Campus Health Clinic operated by Southeast HEALTH.



## Fiscal Summary

	FY20	FY19	FY18
Student Labor	1,969.27		
Faculty Staff Labor	205,778.41	214,418.77	180,495.48
Operating Expenditures	5,869.91	5,246.63	8,940.98
In State Travel			14.87
Out of State Travel		-232.68	
Ground Transportation			23.50
Lodging	116.32		
Business Meals	2.09		
Other Operating Services		25.00	
Other Professional Services	352.26		
Equipment Repairs	237.55		
Postage and Related Expenses		9.97	0.46
Printing and Binding	963.96	1,769.39	534.85
Telephone and Line Charges	1,518.55	2,086.39	2,920.10
Advertising		57.59	
Promotional Items			568.62
Computer Hardware Software Op Exp		53.98	
Office Supplies	1,031.10	474.83	1,242.55
Printing and Photography Suppl	226.45		
Oper Maint Suppl Mech Equip			12.17
Computer Supplies			49.98
Educational Supplies			-42.75
Recreational Supplies			876.54
Banquets Catering		111.60	933.51
Technical and Specialized Suppl	122.98		
Dues and Memberships		875.00	875.00
Publications and Subscriptions		15.56	126.51
Household Equip Under 1000	218.65		
Conferences Meetings Registration	1,080.00		
Room Rentals			595.89
Vehicle Rentals			209.18
Total	213,617.59	219,665.40	189,436.46



**Student Government**

Student Government (SG) is composed of Executive, Legislative, and Judicial branches. The Executive include the SG President, Vice President, and Treasurer. The Student Government Senate is selected each year in a campus wide election by colleges. Colleges are allocated seats based on the enrollment of each college and students from each college stand for election each spring to represent their college at Student Government. There are additional seats in the Senate for first-year students and for ambassadors. There are currently ambassadors to athletics, the Residence Hall Association, International Student Association, Student Activity Council, Regional campuses and the Student Regent.



**Programs and Accomplishments FY20**

- Internal financial system restructuring was done to increase efficiencies. For example, a conference account was added to the discretionary and student events accounts as a third option for students/student organizations to request funding.
- \$6000 was internally budgeted to provide \$1000 to each of the college and the First-Year Senators for programmatic and college needs.
- Senator swore in Jim Essner, Budget Analyst for Campus Life, as an Honorary Senator.
- Many “traditional” programs/events continued such as Faculty Shoutouts, tailgating, co-sponsorship of an event at the River Campus and Senate Scream.
- A successful election and transition process occurred during Student Government’s time away from campus. Voter turnout was even in line with previous years.
- Continued use and enhancement of social media platforms and surveys to gather feedback form students on various topics.



**Fiscal Summary**

	FY20	FY19	FY18
General Fee per Credit Hour	\$1.52	\$1.52	\$1.52
Budgeted Revenues	\$306,960	\$365,000	\$365,000
Revenues Received	\$350,821	\$362,135	379,212

**Expenses and Transfers:**

Student Labor	\$13,203	\$5,513	\$4,562
Staff	\$87,804	\$45,913	\$46,766
Operations	\$35,286	\$54,526	\$38,298
Equipment	\$584		
Student Organizations	\$18,179	\$8,420	\$1,576
Club Sports support	\$17,500	\$17,500	\$19,500
Discretionary Student	\$24,477	\$30,617	\$10,086
Conferences			\$2,183
Graduate Fee Reimbursement	\$7,936	\$8,229	\$8,310
Student Activities Council	\$114,590	\$101,294	\$89,682
Homecoming W.I.N.G.S. support	\$7,988	\$10,550	\$9,079
Music License Fee	\$7,500	\$8,700	\$8,700
Undergraduate Research	\$2,556	\$2,424	\$2,033
Other transfers	\$10,000	\$10,000	\$10,000
		\$93,754	\$43,861
<b>Total Expenses &amp; Transfers:</b>	<b>\$347,603</b>	<b>\$397,439</b>	<b>\$294,636</b>
<b>Carryovers:</b>	<b>\$333,334</b>	<b>\$300,896</b>	<b>\$357,080</b>



## **Textbook Rental**

Since 1915, the University has offered a University textbook rental program that operates as an auxiliary which provides students the ability to rent their textbooks at a flat rate. Currently the rental fee is \$36.31 per course for the majority of undergraduate courses. Graduate students who are enrolled in cross listed 400/600 courses, can also utilize the rental program.



Textbook rental is dedicated to provide a convenient, and an economical benefit to help students reach their educational dreams. In addition, Textbook Rental gives back to the University by providing student support through scholarships. Textbook Rental is currently staffed by two full-time University staff and four student employees. The Redhawk Food Pantry, which is housed inside Textbook Rental provides supplemental food assistance to the University community.

## **Year in Review**

The continuing benefit of Textbook Rental is good for the University and even better for the students! To remain relevant and continue to address the changing needs of our student and faculty clientele, we must identify new ways to ensure students receive the best service, and to remain a competitive option for the students who attend our University.

In the spring of 2020, the University shut down due to the Coronavirus pandemic. While most offices were closed, the Manager of Textbook Rental continued to work on site to maintain the day to day operations. The manager also developed a plan of action regarding how students were to safely return the spring textbooks, as well as picking up summer and fall textbooks. Textbook Rental enlisted the help of FedEx who created a simple to use prepaid return shipping label for students to use to return their spring textbooks. Textbook Rental provided two after hours drop off locations allowing students the opportunity to return their books 24/7 and offered a curbside drop off option for contactless returns both at the Textbook Rental location and when students picked up their regalia at the Show Me Center. We also extended the due date for spring textbooks and forgave any late charges for two months after the original due date.

In the summer of 2020, while still facing the pandemic, we did not allow students inside the book stacks to pick up their own summer textbooks. Students enrolled in summer courses submitted online orders, and they had the option of either picking them up curbside or shipped to their home for free.

During the University closure, the Recreation Center sponsored a food donation event for the University Community, to help support the cause, the Redhawk Food Pantry donated their

overstock food items and boxes which were used to box up and a curbside pick-up distribution process was set up for those who were suffering from food insecurities during this time.

## **Mission**

Textbook Rental strives to support Southeast Missouri State University by providing students, faculty, staff, and the University Community superior service and quality products at fair prices through innovative and efficient operations.

We believe it is critical to the mission of the University for our Department to:

1. Provide the right textbooks and course materials, in the right quantity and in a timely manner for all courses offered by the University.
2. Provide significant employment opportunities for students enrolled at the University.
3. Support the various programs offered by individual University units through scholarship support, internships and donations.
4. Provide the student body a unique opportunity to save money by offering rental textbooks, with a portion of the proceeds going to the Southeast Scholarship Fund.

## **Usage Summary**

There are textbooks for 1281 courses available, which is 19 more courses than 2019, however, some courses use the same text. Our current textbook inventory on hand was 37,828 at the end of FY20, a decrease of 3% from FY19. The replacement value of these texts is estimated at \$3,458,814.63, a decrease of 6% from FY19.



- 59,729 textbooks were rented for FY19
- 53,939 textbooks were rented for FY20
  - Showing a decrease of 10%, the result of an increase in digital course materials being required by certain course sections instead of the textbook, the unavailability of physical textbooks from certain publishers as well as the growing competition from online sources and the reduction in enrollment.
- Free shipping was offered for the return of spring 2020 textbooks and for the ship out of summer 2020 textbooks, over \$10,000 was spent in unexpected shipping expenses for those semesters combined.

## **Regional Campuses, High School locations and Online Distance students**

### *Regional Campuses*

- We provide textbooks to the Sikeston, Kennett and the Poplar Bluff Regional Campuses and the Cape College Center location.
- Each location carries inventory of our textbooks to provide easy access to textbooks for students enrolled in classes at those locations.
  - The Kennett location currently has 930 textbook rental books in their inventory.
  - The Sikeston location currently has 1157 textbook rental books in their inventory.
  - The Poplar Bluff location currently has 154 textbook rental books in their inventory.
  - The Cape College Career location currently has 436 textbook rental books in their inventory.
- Typically these locations would have more textbooks in their inventory to cover summer textbooks, however for those students taking summer courses, their books were shipped to their homes and many students took advantage of shipping their books back to us free of charge because the regional campus locations were closed from March through May.

### *High School Dual Credit Partners*

- We provide textbooks to 35 high schools who are participating in dual credit/early college credit programs.
- High Schools participating in Dual Credit/Early College credit programs, requested 2407 textbooks for FY19, and requested 1973 textbooks for FY20, a decrease of 18%.
- During the spring 2020 semester, we did not have the typical amount of textbook requests due to the closure of many schools or they opted to conduct online learning and used alternative methods.

### *Online Distance Students*

- We also ship out textbooks to our online students with a minimal shipping fee or it can be sent to a regional campus free for easy pick up. During the second half of the spring semester and the summer semester, Textbook Rental offered free shipping to their homes.
- Textbook Rental processed 1486 online orders in FY19 and in FY20 we processed 3003, an increase of 102%.
- The inflated increase is due to the procedural change of only allowing online orders submitted during the summer 2020 semester due to the Coronavirus pandemic.

## Fiscal Summary

	FY20	FY19	FY18
<b>Revenue</b>			
Taxable Rental Income	\$1,241,852	\$1,248,911	\$1,481,220
Fines	\$17,925	\$32,100	\$25,899
Textbook Sales	\$242,902	\$210,655	\$243,329
Non-taxable Sales	\$20,925	\$59,287	\$82,441
Non-taxable Rentals	\$31,441	\$46,430	\$53,600
<b>Total Revenue</b>	<b>\$1,555,046</b>	<b>\$1,597,384</b>	<b>\$1,886,490</b>
<b>Expenses</b>			
Student Payroll	\$18,005	\$19,233	\$13,860
Staff Payroll	\$121,833	\$134,046	\$160,934
Equipment			\$264
Operating Expenses			
Office Supplies	\$3,449	\$1,269	\$2,094
Postage	\$199	\$311	\$523
Telephone	\$1,757	\$1,534	\$1,500
Printing & Binding	\$138		\$15
Miscellaneous	\$5,237	\$6,595	\$8,795
Total Operation Expenses	\$10,780	\$9,709	\$12,926
University Rent & Overhead	\$260,000	\$245,000	\$300,000
Auxiliary Support	\$38,468	\$41,273	\$40,000
Total Expenses	\$449,085	\$449,261	\$527,985
Textbook Rental Revolving - 101010			
Textbook Purchases	\$1,009,200	\$908,599	\$1,220,830
Bad Debt	\$5,000	\$5,000	\$5,000
Total Operating Expenses	\$1,014,200	\$913,599	\$1,225,830
<b>Total Expenses</b>	<b>\$1,463,285</b>	<b>\$1,362,860</b>	<b>\$1,753,816</b>
Net Income	\$91,761	\$234,524	\$132,674
Vacation Accrual		(\$2,747)	\$599
Inventory Adjustment	(\$33,075)	\$174,874	\$33,062
<b>Fund Net</b>	<b>\$124,837</b>	<b>\$62,396</b>	<b>\$99,013</b>



## Fund Balance

	<i>Revenue</i>	<i>Expenses</i>	<i>Net</i>	<i>Fund Balance</i>	<i>Inventory Balance</i>	<i>FB less inventory</i>
FY20	\$1,555,046	\$1,463,285	\$124,837	\$2,707,542	\$930,416	\$1,777,126
FY19	\$1,597,384	\$1,362,860	\$62,396	\$2,582,705	\$897,340	\$1,685,365
FY18	\$1,886,490	\$1,753,816	\$99,013	\$2,520,309	\$1,072,214	\$1,448,095
FY17	\$2,029,677	\$1,722,143	(\$12,938)	\$2,421,296	\$1,105,277	\$1,316,019

## Programs and Accomplishments

### Campus Involvement

- We provided a four free rental fees for spring 2020 certificate as a prize for Testing Services Integrity week event.
- Present at the New Faculty & Staff Orientation fair.
- Present at the Show Me Day Event.
- First Step presentation and present at the “Info to Go” fair.
- Attended the OER Advisory group meetings.
- Attended the Distant Student Services Advisory Group meetings.
- Partnered with Follett Southeast Bookstore for textbook adoptions.

### Accomplishments and Challenges

In the spring of 2020, the University shut down due to the Coronavirus pandemic. While most offices were closed, the Manager of Textbook Rental continued to work on site to maintain the day to day operations which included:

- Fulfilled online orders for students enrolled in 2<sup>nd</sup> 8week classes.
- Orders that needed to be shipped were taken to the local UPS store, which we provided students with free shipping.
- Collected and processed fall textbook adoptions and requisitions.
- Ordered summer textbooks to meet enrollment.
- Worked with Dr. Bruce Skinner and FedEx to create a simple to use prepaid return shipping label for students to use to return their spring textbooks.
- Refurbished the large textbook return box, purchasing a new chute to be installed and ensured it would be available at the end of the spring semester.
- With two after hour drop off locations available 24/7, the manager would provide daily removal of books when necessary. All returned books would be placed in quarantine for 3 days before being returned to the stacks or available to be rented out.





In April, Cindy Balsmann and two student workers returned to help get summer student web orders processed, then another student worker, returned in May. To keep everyone safe we began with limited hours and no overlapping scheduled work times for our student workers.

With everything contact free, we managed to ship out all the summer web orders, providing free shipping and provided curbside pickup and spring book return as another option available for the students. We faced many obstacles such as closed publishing companies, limited availability of used or new books to purchase, additional expenses and adjustments to our procedures. Without our University organizations helping to shelve books during finals week, and our regular temporary workers checking in returns, we were hard pressed to find help, but we managed to find a few good workers who helped during that time.

Because of the overall uncertainty of this unprecedented situation, many of our used book buyers were not willing to travel to come to our department to purchase our discontinued stock, and by the time most buyers felt comfortable to venture out, the value of the books had dropped which caused a great loss of revenue for our department.

We are proud of our Textbook Rental program, and we strive to make it even better. With the hard work and dedication of our team, we will continue to adapt to meet the needs of today's student and we have learned how to face any crisis that may arise. Our team is committed to providing exceptional service to our University community, I am very proud of our dedicated staff during this difficult time.

### **The Redhawk Food Pantry**

- On March 20, 2017, the Redhawk Food Pantry officially opened their door for the first time.
- The pantry is located inside Textbook Rental, they are available: Monday through Friday, 1:00pm-4:00 pm. The pantry is staffed with one Student Manager and student volunteers.
- the pantry has helped:
  - 2017; 146 guests
  - 2018; 380 guests
  - 2019; 513 guests, a 35% increase
- The pantry is supported entirely by donations and strives to provide supplemental food assistance for those who find themselves struggling with food insecurities within the University community.
- All the progress and success would not have been possible without the support of University employees, student organizations, local churches, businesses, and alumni.



- Typically we receive a substantial amount of our inventory through the Greek Week food drive, however due to the closure of the University during this time, our inventory fell short but we were never in a position that we couldn't help a student if in need. We were still able to share our inventory with our Regional Campuses.
- The pantry not only provides food for its clients, but it is also a valuable resource to educate the University community on the current issues of food insecurity amongst their peers.

## Appendix A

### 1999-Present Homecoming Parade, Window Art, Banner, and Yard Art Winners

Year	Parade Float Winners			Window Painting/*Banner/Yard Art		
	1 <sup>st</sup>	2 <sup>nd</sup>	3 <sup>rd</sup>	1 <sup>st</sup>	2 <sup>nd</sup>	3 <sup>rd</sup>
1999	Pi Kappa Alpha/ Alpha Xi Delta	Sigma Phi Épsilon/ Delta Delta Delta	Phi Delta Theta/ & Alpha Chi Omega			
2000	Sigma Nu/ Alpha Delta Pi Phi Eta Sigma Dare Program	Pi Kappa Alpha & Alpha Chi Omega Horticulture Club	Sigma Phi Épsilon & Tri Sigma			
2001	Alpha Delta Pi/ Pi Kappa Alpha Baptist Student Union Dare Program	Sigma Sigma Sigma/Alpha Chi Omega/Sigma Phi Épsilon Air Force ROTC	Sigma Nu/Gamma Phi Beta/ Sigma Tau Gamma	Pi Kappa Alpha/Alpha Delta Pi	Phi Delta Theta/Alpha Xi Delta	Gamma Phi Beta/ Sigma Nu/ Sigma Tau Gamma
2002	Pi Kappa Alpha/Gamma Phi Beta Airforce ROTC Dare Program	Alpha Chi Omega & Sigma Tau Gamma & Theta Xi Baptist Student Union	Delta Delta Delta & Sigma Nu	Alpha Delta Pi/Sigma Chi Alpha Kappa Psi	Pi Kappa Alpha & Gamma Phi Beta Baptist Student Union	Delta Delta Delta & Sigma Nu
2003	Sigma Tau Gamma/Delta Delta Delta Alpha Kappa Psi Dare Program	Pi Kappa Alpha & Alpha Delta Pi	Sigma Phi Epsilon & Gamma Phi Beta	Pi Kappa Alpha & Alpha Delta Pi	Sigma Nu & Sigma Sigma Sigma	Alpha Xi Delta, Theta Xi, Sigma Chi
2004	Delta Delta Delta/ Pi Kappa Alpha Alpha Kappa Psi Cape Shriners	Alpha Delta Pi/ Sigma Chi/ Phi Delta Theta	Alpha Xi Delta/ Sigma Tau Gamma/Theta Xi	Alpha Delta Pi/ Sigma Chi/ Phi Delta Theta	Delta Delta Delta/ Pi Kappa Alpha	Gamma Phi Beta/ Lambda Chi Alpha/ Delta Chi
2005	Alpha Chi Omega/ Pi Kappa Alpha Student Government/Stude nt Activities Council/Rowdy Crowd Girl Scout Troop #134 Sigma Nu & Alpha Delta Pi	Sigma Phi Epsilon/ Delta Delta Delta	Alpha Delta Pi/ Sigma Nu	Pi Kappa Alpha & Alpha Chi Omega	Sigma Nu & Alpha Delta Pi	Southeast Bookstore
2006	Sigma Nu/Sigma Sigma Sigma/Gamma Phi Beta Gamma Sigma Sigma Safe House for Women Gamma Sigma Sigma	Alpha Delta Pi/Sigma Phi Epsilon/Delta Sigma Theta	Delta Delta Delta/Delta Chi/Lambda Chi Alpha	Gamma Phi Beta/Sigma Nu/Sigma Sigma Sigma	Sigma Alpha Iota	Delta Delta Delta/Delta Chi/Lambda Chi Alpha
2007	Sigma Phi Epsilon/ Alpha Xi Delta/ Sigma Sigma Sigma RHA Veterans	Alpha Delta Pi/ Sigma Tau Gamma/ Sigma Chi Gamma Sigma Sigma	Lambda Chi Alpha/ Alpha Chi Omega	Alpha Xi Delta/Sigma Sigma Sigma/Sigma Phi Epsilon	Delta Delta Delta/Sigma Nu	Alpha Delta Pi/Sigma Chi/Sigma Tau Gamma

2008	Alpha Xi Delta/Pi Kappa Alpha <b>Alpha Kappa Psi</b> Semo ShowStoppers	Delta Delta Delta/ Sigma Phi Epsilon <b>TIED 2nd Place with</b> Alpha Chi Omega/ Delta Chi/ Sigma Tau Gamma		Alpha Delta Pi/ Lambda Chi Alpha/Theta Xi	Alpha Xi Delta/Pi Kappa Alpha	Delta Delta Delta/ Sigma Phi Epsilon
2009	Delta Delta Delta/ Sigma Chi <b>Gamma Sigma</b> Sigma	Alpha Chi Omega/ Sigma Phi Epsilon <b>Alpha Kappa Psi</b>	Alpha Delta Pi/ Pi Kappa Alpha	Alpha Xi Delta/ Delta Chi/ Sigma Tau Gamma <b>Gamma Sigma</b> Sigma	Alpha Chi Omega/ Sigma Phi Epsilon <b>American Society</b> of Interior Designers	Delta Delta Delta/ Sigma Chi <b>Alpha Kappa Psi</b>
2010*	Alpha Chi Omega/Pi Kappa Alpha <b>Gamma Sigma</b> Sigma	Delta Delta Delta/ Sigma Tau Gamma/ Delta Chi <b>Alpha Kappa Psi</b>	Gamma Phi Beta/ Sigma Nu <b>SAC</b>	Delta Delta Delta/ Sigma Tau Gamma/ Delta Chi <b>Alpha Kappa Psi</b>	Alpha Xi Delta/ Sigma Chi/ Theta Xi <b>Gamma Sigma</b> Sigma	Alpha Delta Pi/ Sigma Phi Epsilon
2011	Alpha Xi Delta/Sigma Nu <b>Sigma Alpha Iota</b> and Phi Mu Alpha	Alpha Chi Omega/Sigma Chi/Lambda Chi Alpha	Alpha Delta Pi/Delta Chi/Sigma Tau Gamma	Delta Delta Delta/Pi Kappa Alpha <b>Sigma Alpha Iota</b> and Phi Mu Alpha	Alpha Xi Delta/Sigma Phi Epsilon	Alpha Delta Pi/Delta Chi/Sigma Tau Gamma
2012	Alpha Chi Omega/Delta Chi/Theta Xi <b>Student Activities</b> Council/Campus United Way/Phi Beta Lambda	Delta Delta Delta/Sigma Nu <b>Alpha Kappa Psi</b>	Alpha Delta Pi <b>Alpha Phi Omega</b>	Gamma Phi Beta/Lambda Chi Alpha/Pi Kappa Alpha <b>Student Activities</b> Council/Campus United Way/Phi Beta Lambda	Delta Delta Delta/Sigma Nu <b>Sigma Alpha Iota</b>	Sigma Sigma Sigma/Gamma Sigma Sigma <b>Alpha Phi Omega</b>
2013	Gamma Sigma Sigma/ Pi Kappa Alpha <b>Phi Beta</b> Lambda/Alpha Kappa Psi	Lambda Chi Alpha/ Delta Delta Delta/ Theta Xi <b>Alpha Phi Omega</b>	Gamma Phi Beta/ Sigma Chi <b>Chinese Student</b> Scholar Association	Lambda Chi Alpha/ Delta Delta Delta/ Theta Xi <b>Student Activities</b> Council/ RHA	Gamma Sigma Sigma/ Pi Kappa Alpha <b>Phi Beta Lambda,</b> Alpha Kappa Psi	(Tie for 2 <sup>nd</sup> ) Alpha Delta Pi, Sigma Nu
2014	Alpha Delta Pi, Pi Kappa Alpha, Theta Xi (class A) <b>Phi Beta Lambda,</b> Sigma Alpha Iota (class B)	Gamma Phi Beta, Sigma Nu, Delta Chi (class A)	Sigma Sigma Sigma, Lambda Chi Alpha (class A)			
2015	Alpha Xi Delta & Lambda Chi Alpha (class A) <b>Sigma Alpha Iota &amp;</b> Phi Mu Alpha (class B)	Alpha Chi Omega & Pi Kappa Alpha (class A) <b>Phi Beta Lambda</b> (class B)	Gamma Sigma Sigma & Phi Delta Theta (class A) <b>Alpha Phi Omega</b> (class B)	Delta Delta Delta, Delta Chi, & Sigma Tau Gamma	Alpha Xi Delta & Lambda Chi Alpha	Alpha Chi Omega & Pi Kappa Alpha
2016	Alpha Xi Delta and Pi Kappa Alpha (Class A)	Gamma Phi Beta, Phi Delta Theta and Lambda Chi Alpha (Class A)	Alpha Chi Omega and Sigma Chi (Class A)	Sigma Chi and Alpha Chi Omega (Division 1)	Alpha Delta Pi, Sigma Tau Gamma and Delta Chi (Division 1)	Lambda Chi Alpha, Phi Delta Theta and Gamma Phi Beta (Division 1)
2016	<b>Phi Beta Lambda</b> and National Residence Hall Honorary (Class B)	<b>Alpha Phi Omega</b> (Class B)	<b>Alpha Chi Sigma</b> (Class B)	<b>SAC</b> (Division 2)	<b>Alpha Chi Sigma</b> (Division 2)	<b>Phi Beta Lambda</b> and NRHH (Division 2)
2017	Alpha Delta Pi & Pi Kappa Alpha (Class A) <b>Phi Beta Lambda</b> (Class B)	Alpha Phi, Alpha Xi Delta, & Phi Delta Theta (Class A) <b>Alpha Phi Omega &amp;</b> Alpha Chi Sigma (Class B)	Alpha Chi Omega, Sigma Nu, & Sigma Tau Gamma (Class A) <b>National Residence</b> Hall Honorary (Class B)	Alpha Delta Pi & Pi Kappa Alpha (Division 1) <b>National</b> Residence Hall Honorary (Division 2)	TIE Gamma Phi Beta & Tau Kappa Epsilon Alpha Chi Omega, Sigma Nu, & Sigma Tau Gamma (Division 1) <b>Gamma Sigma</b> Sigma (Division 2)	Delta Delta Delta & Lambda Chi Alpha (Division 1) <b>Phi Beta Lambda</b> (Division 2)

2018	Lambda Chi Alpha, Theta Xi, & Alpha Chi Omega (Class A) Phi Beta Lambda (Class B)	Alpha Delta Pi & Sigma Chi (Class A) Gamma Sigma Sigma (Class B)	Sigma Sigma Sigma & Phi Delta Theta (Class A) Kappa Beta Gamma (Class B)	Alpha Delta Pi & Sigma Chi (Division 1) Kappa Beta Gamma (Division 2)	Sigma Nu, Alpha Xi Delta, & Sigma Tau Gamma (Division 1) Gamma Sigma Sigma (Division 2)	Sigma Sigma Sigma & Phi Delta Theta (Division 1) NRHH & RHA(Division 2)
2019	Alpha Delta Pi and Lambda Chi Alpha, "Peter Pan" (Class A) Gamma Sigma Sigma and Kappa Beta Gamma, "Willie Wonka and the Chocolate Factory" (Class B)	Alpha Xi Delta and Sigma Chi, "Cloudy With A Chance of Meatballs" (Class A) Lutheran Student Fellowship, "The Chronicles of Narnia (Class B)	Sigma Sigma Sigma, Theta Xi and Tau Kappa Epsilon, "The Magic Treehouse (Class A) Alpha Phi Omega, "A Series of Unfortunate Events" (Class B)			

- Black Lettering indicates Division I winners
- Red Lettering indicates Class B/Division II winners
- Blue Lettering indicates Community Class winners
- Green Lettering indicates the "Sponsors Pick" for the parade. The winner received a plaque and was selected by Southeast Bookstore (Parade Sponsor). This award began in 2005 and ended after 2006

**Appendix B**

**1996-Present Man and Woman of the Year and Finalists; Overall Homecoming winner**

<u>Year</u>	<u>Man of the Year</u>	<u>Women of the Year</u>	<u>M&amp;WOTY Finalists</u>	<u>Overall Winner</u>		
				<u>1<sup>st</sup></u>	<u>2<sup>nd</sup></u>	<u>3<sup>rd</sup></u>
1996			Matt Blake, Trevor Bossert, Jason Legrand, Mark Oberhauser, Ryan Ozinga, Traci Hackstadt, Emily Holt, Kime Jenne, Christie Johnson, Angela Lauer			
1997			Kevin Cook, Jason Lane, Matt Prins, Tim Schoolfield, Gary Wrigley, Jeanne Ball, Danna Dockery, Shanna Dusablon, Candy Hart, Lisa Ronsick			
1999	Brian Cochran	Katie Malz	Drew Griffin, Kelly Moss, Kate Parks, Amanda Rainey, Stephanie, Slaten, Jon Litner, Kristopher McConnell, Doug McDermott			
2000	Garvin Ambrose	Beth DeGeeter	Jeremy Butler, Derrick Feldmann, Aaron Spratt, Brad Wolf, Natalie Conant, Nicole Conant, Tanya Efken, Jenny Lane			
2001	Tom Foley	Meredith McDowell	James Backer, Paul Dobbins, Travis Partney, Kevin Schmieder, Sarah Berkbigler, Kimberly Fallert, Erin Hamm, Kelly Lambing			
2002	Brian Kohlberg	Brooke Adams	Jake Lohse, Christie Bernds, Brian Privett, Brian Schuberg	Pi Kappa Alpha/ Gamma Phi Beta Alpha Kappa Psi	Sigma Nu/Delta Delta Delta BSU	Sigma Phi Epsilon/ Alpha Delta Pi Airforce ROTC
2003	Matt Imgrund	Katie Fink	Adam Schaefer, Travis Stevens, Jared White, Brian Whitehead, <u>Laura Hockensmith</u> , <u>Carissa Sims</u> , Crystal Uhe, Sally Muraski (Tied runner up)			

2004	Nicholas Riordan	Candice Coffey	Dan Frierdich, Dane Huxel, Jake Risk, John Taylor, Amanda Trainor, Jen Cross, Natalie Renn, Teresa Layton	Delta Delta Delta/ Pi Kappa Alpha	(tie) Alpha Delta Pi/ Sigma Chi/ Phi Delta Theta Sigma Sigma Sigma/ Sigma Nu	
2005	Joseph Gordon	Jennifer Clarkston	Amy Brookover, Kevin Bray, Nathan Burch, Rebecca Langan, John Loesel, Keith Robinson II, Danielle Zust, Kelly Wogtech			
2006	James Wells	Rachel Padgett	<u>Jennifer Gilbert</u> , Katie LoRusso, Adam Hanna, Megan Matter, James Schnepel, <u>Andrew Tilmon</u> , Elsa Sode, James Wells			
2007	Matthew Knickman	Jeanette Holloway	Nathan Saverino, Ali Harvey, <u>Scott Crean</u> , Andrea Branum, Michael Painton, <u>Brooke Privett</u> , Robert Muller, Nikki Eggleston	Alpha Xi Delta/ Sigma Sigma Sigma/ Sigma Phi Epsilon		
2008	Billy Garrett	Sarah Snyder	Nicholas Alexander, Jodie Amschler, Ed Beckman, <u>Victoria Boren</u> , Leni Fluegge, Jeff Grapperhaus, <u>Scott Kaverman</u> , Shatrasha Stone	Alpha Xi Delta/ Pi Kappa Alpha		
2009	Tony Dentman	Emily Brown	Molly Davis, Dana Gordon, Amanda Hardwick, <u>Shamone Mitchell</u> , Kurtis Cappel, Eric Johnson, Timothy Lucas, <u>Nolan Ryan</u>	Alpha Chi Omega/ Sigma Phi Epsilon	Alpha Xi Delta/ Delta Chi/ Sigma Tau Gamma	Delta Delta Delta/ Sigma Chi
2010	Benjamin Hooe	Ashley Weder	Nicole Egelhofer, Brittany Gholson, Amy Kreher, <u>Denise Schmidt</u> , <u>Jared Henrichs</u> , Bryan Kujawa, Daniel Schuenemeyer, Ben Tiller	Delta Delta Delta/ Sigma Tau Gamma/ Delta Chi Alpha Kappa Psi	Alpha Chi Omega/ Pi Kappa Alpha Gamma Sigma Sigma	Gamma Phi Beta/ Sigma Nu
2011	Patrick Vining	Katie Herring	<u>Caroline Burdin</u> , Emilee Glueck, Emilee Hargis, Alexandra Kaufman, <u>Drew Reilly</u> , Egbar Ozenkoski,	Alpha Chi Omega/Sigma Chi/Lambda Chi Alpha	Alpha Delta Pi, Delta Chi and Sigma Tau Gamma	Gamma Phi Beta and Sigma Phi Epsilon



			Lukumanu Sodamade, Zachary Tucker			
2012	Derek May	Leshay Mathis	<u>Mary Bauer</u> , Madeline McKenzie, Olivia Plumlee, Megan Stackle, <u>Dominic Cicerelli</u> , Corey Culbreath, Chris Dzurick, Greg Felock,	Delta Delta Delta/Sigma Nu <b>Student Activities Council/Campus United Way/Phi Beta Lambda</b>	Alpha Chi omega/Delta Chi/Theta Xi <b>Alpha Kappa Psi</b>	Gamma Phi Beta/Lambda Chi Alpha/Pi Kappa Alpha <b>Sigma Alpha Iota and All Girls Rock</b>
2013	Benny Dorris	Lacey Balsmann	Lacey Balsmann, Ashley Harris, Jill Irvin <u>Mollie Laramore</u> , Jamie Norrenberns, Benny Dorris, Andrew Lerch, Nick Maddock, <u>Craig Robinson</u> , Austin Wendt	Lambda Chi Alpha/ Delta Delta/ Theta Xi <b>Phi Beta Lambda/Alpha Kappa Psi</b>	Gamma Sigma Sigma/ Pi Kappa Alpha <b>Student Activities Council/RHA</b>	Gamma Phi Beta/ Sigma Chi <b>Alpha Phi Omega</b>
2014	Weston Blankenship	Jessica Mues	Amber Cason, Weston Blankenship, Taylor Cox-Hoffman, A.J. Collins, Jessica Mues, Zach Cox, <u>Lydia Ness</u> , <u>Ethan Hochstein</u> , Caitlin Silger, Kyle Jacobsmeyer	Sigma Sigma Sigma/Lambda Chi Alpha (class A) <b>Phi Beta Lambda/Sigma Alpha Iota</b> (class B)	Delta Delta Delta, Sigma Phi Epsilon (class A)	Alpha Delta Pi, Pi Kappa Alpha, Theta Xi (class A)
2015	Evan Siers	Harman Malhi	Andrea Cox, <u>Lauren Denault</u> , Catalina Mahr, Harman Malhi, Amy McEvoy, Parker Butler, Bradford Hutcheson, <u>Peter Jacobsen</u> , Julian Sanders, Evan Siers	Alpha Xi Delta & Lambda Chi Alpha (Div. 1) <b>Phi Beta Lambda</b> (Div. 2)	Delta Delta Delta, Delta Chi & Sigma Tau Gamma (Div. 1) <b>Sigma Alpha Iota &amp; Phi Mu Alpha</b> (Div. 2)	Alpha Chi Omega & Pi Kappa Alpha (Div. 1) <b>Alpha Phi Omega</b> (Div. 2)
2016	Keyeon Pitts	Raven Lawhorn	Julia Brady, <u>Lexi Hightaian</u> , Raven Lawhorn, Peyton Mogley, and Destiny Tulo-Lang, Wesley Cox, Dylan Kennedy, Collin Kramer, Keyeon Pitts, and <u>Brandon Robbers</u>	Alpha Xi Delta and Pi Kappa Alpha (Div. 1) <b>Phi Beta Lambda and National Residence Hall Honorary</b> (Div. 2)	Delta Delta Delta, Sigma Nu and Theta Xi (Div. 1) <b>Alpha Chi Sigma</b> (Div. 2)	Alpha Chi Omega and Sigma Chi (Div. 1) <b>Alpha Phi Omega</b> (Div. 2)

2017	Juan Salas	Emily Daly	Angela Backer, <u>Amanda Carpenter</u> , Emily Daly, Kara Hartnett, Emma Hoover, Matthew Hayes, Juan Salas, Evan Schmidt, <u>Jake Scott</u> , Bhanu Sehgal	TIE Lambda Chi Alpha & Delta Delta Delta Pi Kappa Alpha & Alpha Delta Pi (Div. 1) FBLA & Phi Beta Lambda (Div. 2)	Alpha Chi Omega, Sigma Nu, & Sigma Tau Gamma (Div.1) National Residence Hall Honorary (Div. 2)	Alpha Phi, Alpha Xi Delta, & Phi Delta Theta (Div. 1) Gamma Sigma Sigma (Div. 2)
2018	Zack Koeller	Danielle Bergfeld	Michelle VanZandt, Kaetlin Lamberson, Grace Lester, Alexis Dilg, Raymond Killian, Caleb Ellenburg, Luke Legrand, Brendan Scholl	Alpha Delta Pi Sigma Chi (Div. 1) Gamma Sigma Sigma (Div. 2)	Alpha Chi Omega, Lambda Chi Alpha, & Theta Xi (Div. 1) NRHH & RHA (Div. 2)	Alpha Xi Delta, Sigma Nu, & Sigma Tau Gamma (Div. 1) Kappa Beta Gamma (Div. 2)
2019	Justin Jacobs	Francesca Bucci	<u>Elwood Voss</u> , <u>Mo Muzzey</u> , Emma DeRousse, Roshelle Tauro, of Maharashtra, Margy Tepen,; Dominick Gillette; Anthony Shepard, Jacob Wilkinson,	Alpha Xi Delta and Sigma Chi (Div 1) Gamma Sigma Sigma and Kappa Beta Gamma (Div 2)	Alpha Delta Pi and Lambda Chi Alpha (Div 1)	Alpha Chi Omega and Sigma Phi Epsilon (Div 1)

- Black Lettering indicates Division I winners
- Red Lettering indicates Class B/Division II winners
- Underlined names in the M&WOTY categories indicate runner-ups.

## Appendix C

### Greek Governing Council Presidents

Semester	IFC President	NPC President	NPHC President
Fall 20	Kade Flemming (ΣΝ)	Sadie Sottos (ΑΞΔ)	Raven Cole (ΣΓΡ)
Spring 20			Lo Simmons (ΖΦΒ)
Fall 19	Tom Oleson (ΣΦΕ)	Margy Tepen (ΔΔΔ)	Jaleea Hudson-Wilson (ΔΣΘ)
Spring 19			
Fall 18	Brian DiMariano (ΠΚΑ)	Grace Lester (ΓΦΒ)	
Spring 18			
Fall 17	Brian Lamb (ΛΧΑ)	Emma Hoover (ΑΧΩ)	Justin Robinson (ΙΦΘ)
Spring 17			
Fall 16	Sean Thomas (ΣΝ)	Claire Simmonds (ΓΦΒ)	Andrea Cox (ΔΣΘ)
Spring 16			
Fall 15	Parker Butler (ΛΧΑ)	Taylor Shinabargar (ΣΣΣ)	
Spring 15			
Fall 14	Weston Blankenship (ΣΝ)	Caitlin Silger (ΔΔΔ)	Josh Price (ΦΒΣ)
Spring 14			
Fall 13	Nick Maddock (ΛΧΑ)	Katy First (ΑΞΔ)	
Spring 13			
Fall 12	Ryan Manning (ΣΝ)	Olivia Plumlee (ΑΞΔ)	
Spring 12			
Fall 11	Nolan Ryan (ΛΧΑ)	Amy Kreher (ΔΔΔ)	Melvin Bond (ΦΒΣ)
Spring 11			
Fall 10	Blake Essner (ΣΤΓ)	Paige Adkisson (ΑΧΩ)	Corey Hawkins (ΦΒΣ)
Spring 10			
Fall 09	Ed Beckmann (ΣΧ)	Stephanie Black (ΔΔΔ)	Nicholas Alexander (ΑΦΑ)
Spring 09			
Fall 08	Matt Knickman (ΛΧΑ)	Jennifer Belmar (ΣΣΣ)	
Spring 08			
Fall 07	Adam Schultz (ΣΦΕ)	Jen Clarkston (ΔΔΔ)	

<b>Spring 07</b>			Russell Crawford (ΑΦΑ)
<b>Fall 06</b>	Nate Burch (ΣΦΕ)	Laura Hammond (ΑΔΠ)	
<b>Spring 06</b>			Tamekia DeVoil (ΔΣΘ)
<b>Fall 05</b>	Mardy Leathers (ΛΧΑ)	Teresa Layton (ΔΔΔ)	
<b>Spring 05</b>			
<b>Fall 04</b>	Kenneth Lee Schlitt (ΘΞ)	Stephanie Eddy (ΓΦΒ)	
<b>Spring 04</b>			
<b>Fall 03</b>	Nick Weirciak (ΛΧΑ)	Sarah Beard (ΑΧΩ)	
<b>Spring 03</b>			
<b>Fall 02</b>	Tom Foley (ΣΦΕ)	Tara Benson (ΣΣΣ)	
<b>Spring 02</b>			
<b>Fall 01</b>		Jenny Lane (ΑΔΠ)	
<b>Spring 01</b>			
<b>Fall 00</b>	Bryan Sauter (ΠΚΑ)	Katie Malz (ΑΔΠ)	
<b>Spring 00</b>			
<b>Fall 99</b>	Justin Buck (ΠΚΑ)	Stacey Yaeger (ΑΔΠ)	
<b>Spring 99</b>			
<b>Fall 98</b>	Ben Scott (ΦΔΘ)	Kim Jenne (ΔΔΔ)	
<b>Spring 98</b>			
<b>Fall 97</b>		Stephanie Slape (ΑΧΩ)	
<b>Spring 97</b>			

## Appendix D

**Greek Fraternity and Sorority of the Year** (from 2002-2016 the chapter of the year award was called the *Fraternal Award for Excellence* and multiple chapters could win. Beginning with 2017 the Five Star Program was implemented).

2019	Alpha Delta Pi	Sigma Nu		
2018	Delta Delta Delta	Phi Delta Theta		
2017	Delta Delta Delta	Sigma Phi Epsilon		
2016	Alpha Delta Pi	Lambda Chi Alpha		
2015	Alpha Delta Pi	Delta Chi		
2014	Alpha Delta Pi	Sigma Phi Epsilon		
2013				
2012				
2011				
2010	Alpha Delta Pi	Gamma Phi Beta	Lambda Chi Alpha	
2009	Gamma Phi Beta	Lambda Chi Alpha		
2008	Gamma Phi Beta	Lambda Chi Alpha		
2007	Alpha Chi Omega	Alpha Delta Pi	Gamma Phi Beta	Lambda Chi Alpha
2006	Delta Delta Delta	Gamma Phi Beta		
2005	Alpha Chi Omega	Alpha Delta Pi	Sigma Phi Epsilon	
2004	Alpha Delta Pi	Alpha Chi Omega	Sigma Phi Epsilon	
2003	Alpha Chi Omega			
2002	Alpha Chi Omega			